

LEGENDE DES PLANCHES



PLANCHE I - Histochimie.

- fixation alcool formol acide acétique.
- recherche des ribonucléines (vert de méthyle pyronine)
(1 - 2 - 3 - 4 - 5 - 6)
- fixateur Bensley - Hémalum fuschine (7)
- 8-9 - Zenker formol - Volkonsky -

PLANCHE II - Histochimie - cytologie -

- fixateur Zenker formol - coloration Volkonsky.
(1 - 2)
- fixateur alcool acétone - Gomori : recherche de la phosphatase alcaline (3-4-5-6)

PLANCHE III - Histochimie -

- fixateur Bensley - oxydation périodique réactif Schiff (1 - 2).
- fixateur Bensley - Bleu Alcian - (3 - 6)
- fixateur Bensley - Gomori mucines (4 - 5)
- Zenker - Volkonsky (7).

PLANCHES IV - V - VI - Anatomie microscopique.

PLANCHE VII - Histologie - cytologie - Zenker formol - Volkonsky.

PLANCHE VIII - Alcool formol - acide acétique - Vert de méthyle pyronine.

PLANCHE IX - Alcool formol - acide acétique - Vert de méthyle pyronine.

PLANCHE X - Histochimie dans l'épithélium digestif et tube hépatopancréatique. Phosphatase alcaline - composés soufrés.

PLANCHE XI - Histochimie - appareil digestif - Recherche des polysides - appareil génital.

PLANCHE XII - Histochimie - Mucines (Gomori) Métachromasie (Mucines et polysides)

PLANCHE XIII - Cytologie et histochimie dans les tubes hépatopancréatiques.

PLANCHE XIV - Histochimie : composés soufrés.

PLANCHE XV - Glandes tégumentaires - en lambeaux
Recherche de polysides, de mucines -

PLANCHE XVI - Recherche de composés soufrés.
Polysides dans glandes tégumentaires.

PLANCHE XVII- Glandes tégumentaires en rosette :
- Cytologie
- Histochimie (phosphatase alcaline,
mucines)

PLANCHE XVIII - Glandes tégumentaires
- Recherche de ribonucléines -
- Vert de méthyle pyronine -

PLANCHE XIX - Histochimie dans la région des glandes
tégumentaires après la mue (XX, fig.2)

PLANCHE XX - Histochimie dans l'appareil génital.

LEGENDE DES ABREVIATIONS

abd.	abdomen
ane.	antenne
bb.	bordure en brosse (épithélium digestif).
c	coxa
ca.	cytoplasme alvéolaire
cc.	canal collecteur
cf.	cytoplasme fibrillaire
ch.	chitine
c.h.p.	canal hépatopancréatique
c.exc.	canal excréteur
c.g.	canal génital.
c.gl.	cytoplasme glandulaire
cr.	cristaux
cr.	crible - c.r. cellule de remplacement (Pl. VII)
Co.	coeur
cc.v.	cytoplasme vacuolaire
c.s.	canal sécréteur
d.	décollement
d. m.	dent médioventrale
end.	endopodite
ep.	épinère
est.	estomac
ex.	exopodite
Gc.	grande cellule (hépatopancréas)
gn.	ganglion nerveux
gn.th.	ganglion nerveux thoracique
gl. m.	glande tégumentaire en masse
gl. r.	glande en rosette
gl.t.l.	glande tégumentaire en lambeau.
gl. en m. des u.	glande en masse des uropodes.
I.m.	intestin moyen - In p : intestin moyen postérieur.
hyp.	hypoderme
m.	muscle
mb	membrane basale
mél.	mélanine

n : nucléole ou noyau
N : noyau
na : noyau allongé
o : ovule
ov : ovaire
Pb : partie basale de la cellule
Pc : petite cellule - hépatopancréas
P. alc. : phosphatase alcaline
pl. : pléopode
R.N.A. : Ribonucléines
sf : sécrétion fuscinophile
td : tube digestif
test : testicule
ty : typhlosolis
u : uropode



I



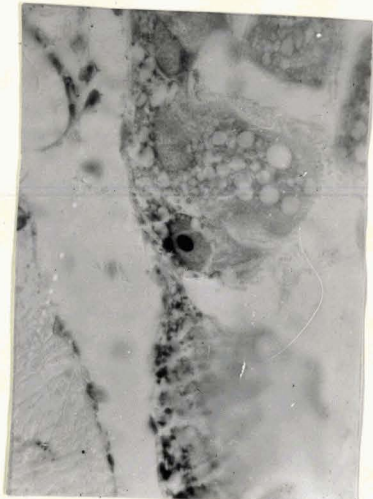
2



3



4



5



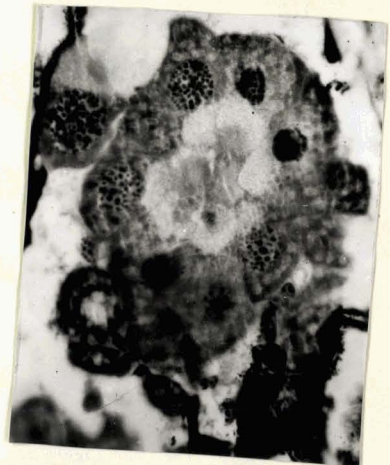
6



7



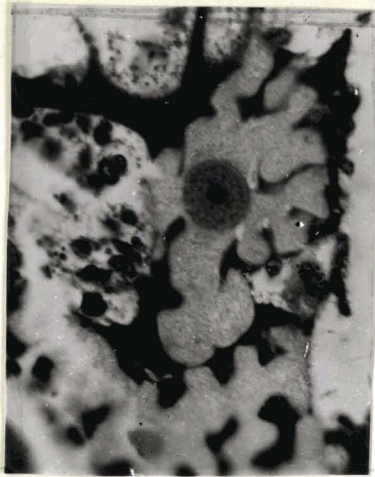
8



9

Planche I

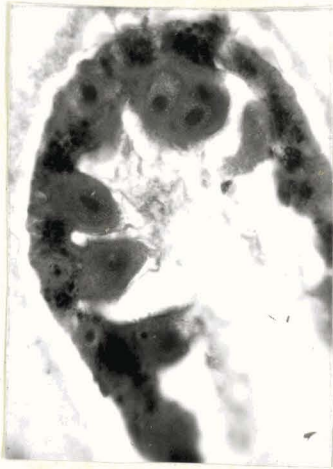




I



2



3



4

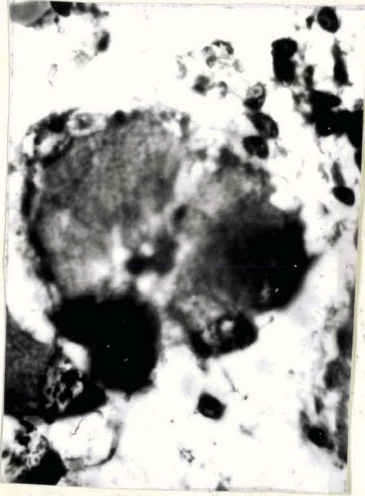


5



6

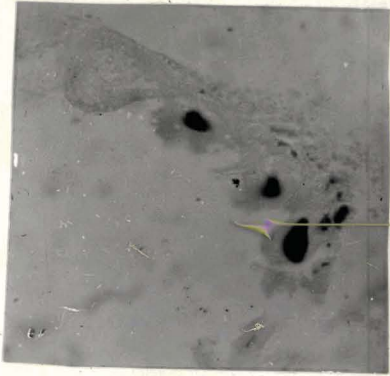
BU
LILLE



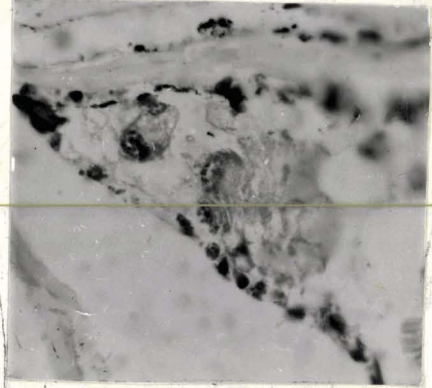
6



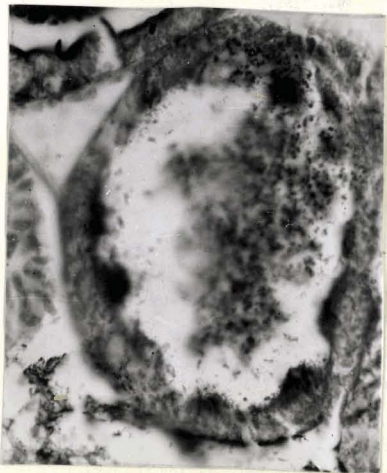
5



4



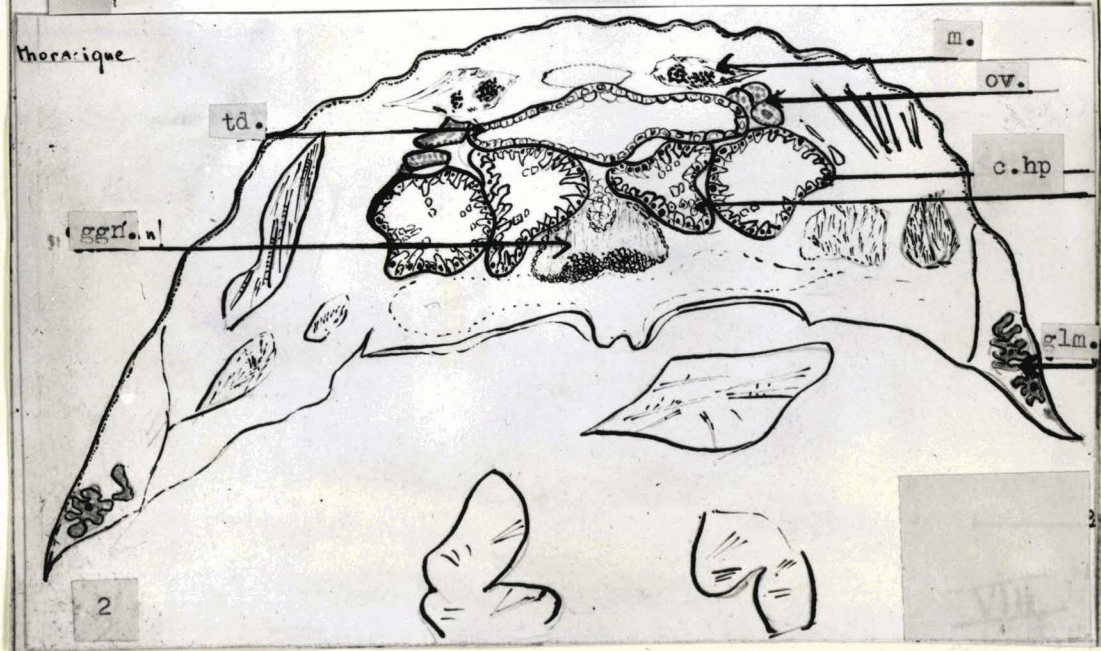
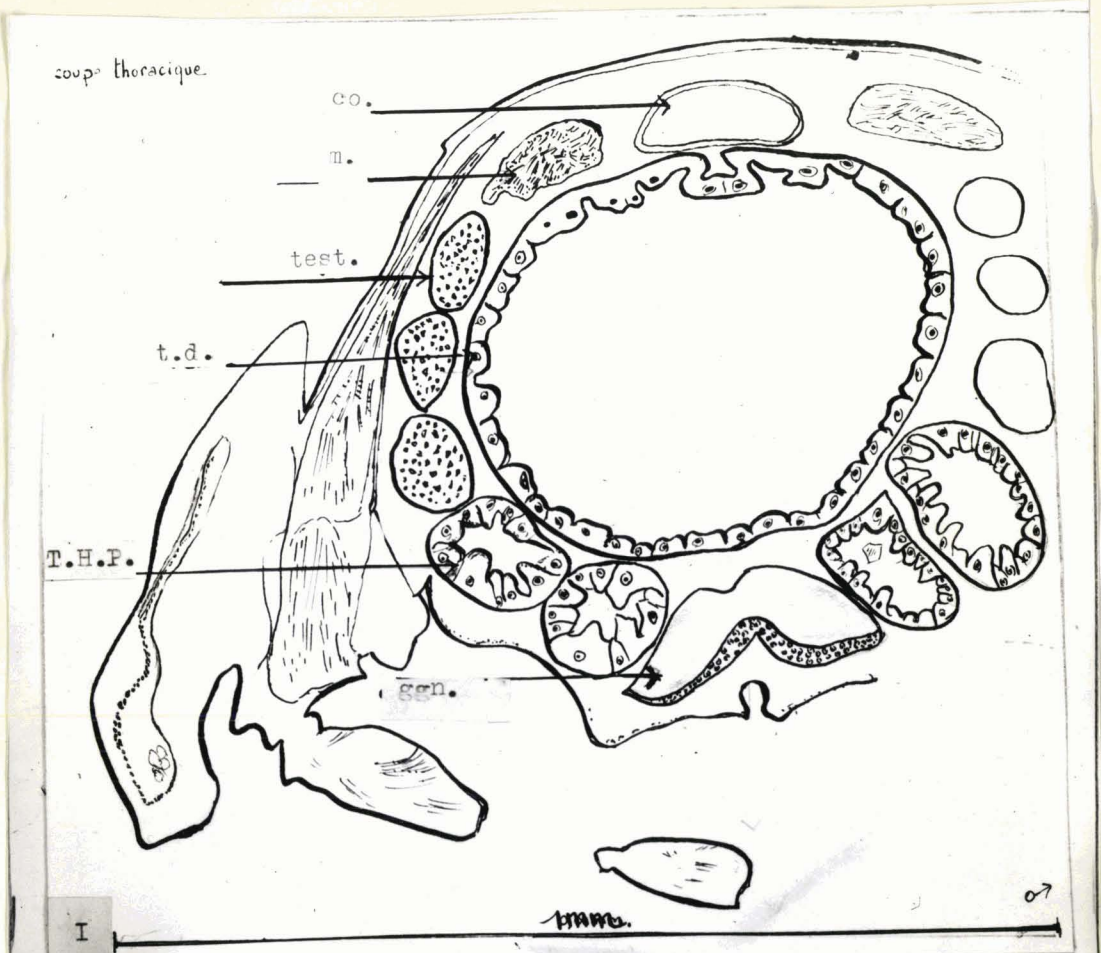
3



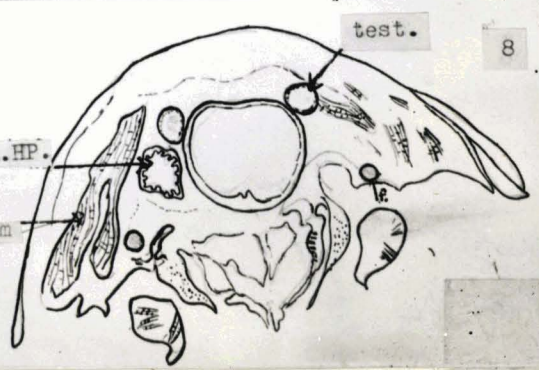
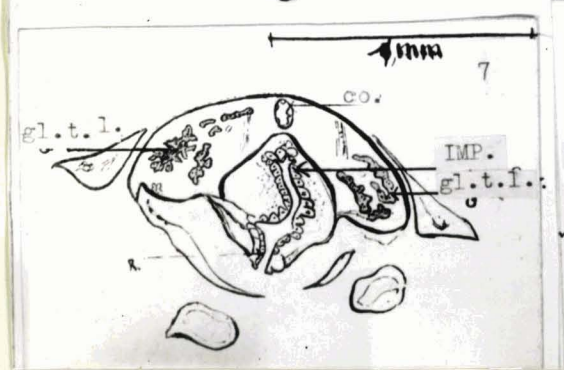
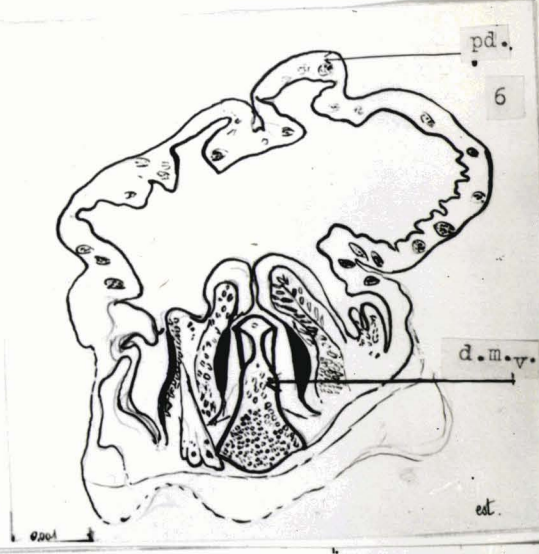
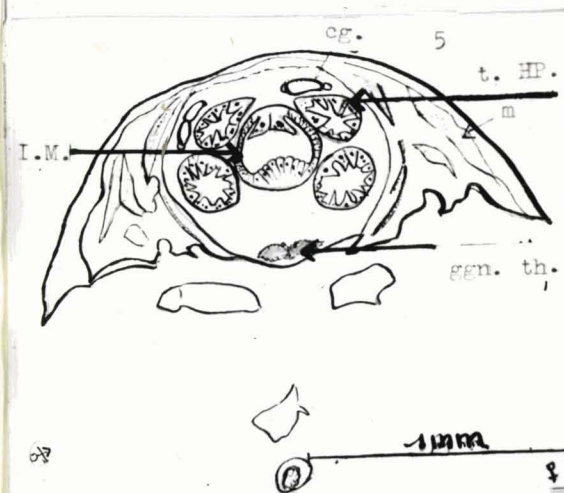
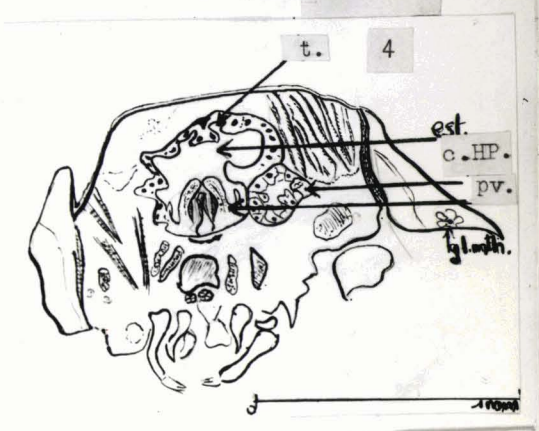
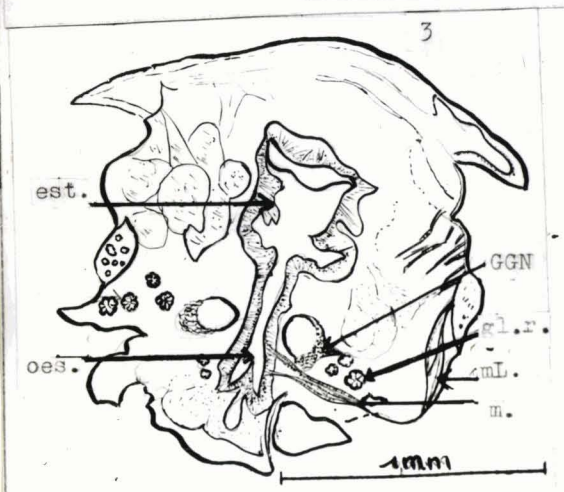
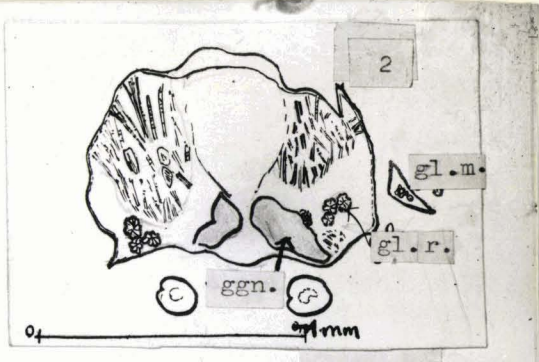
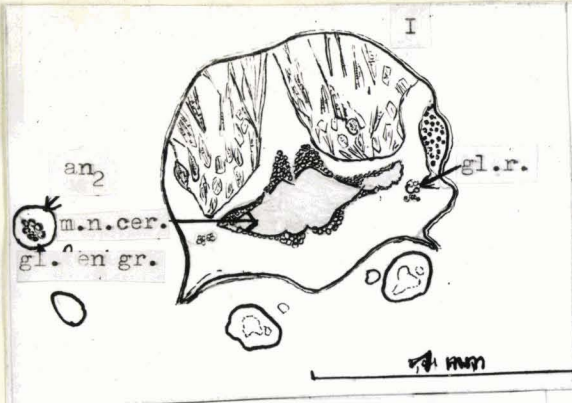
2



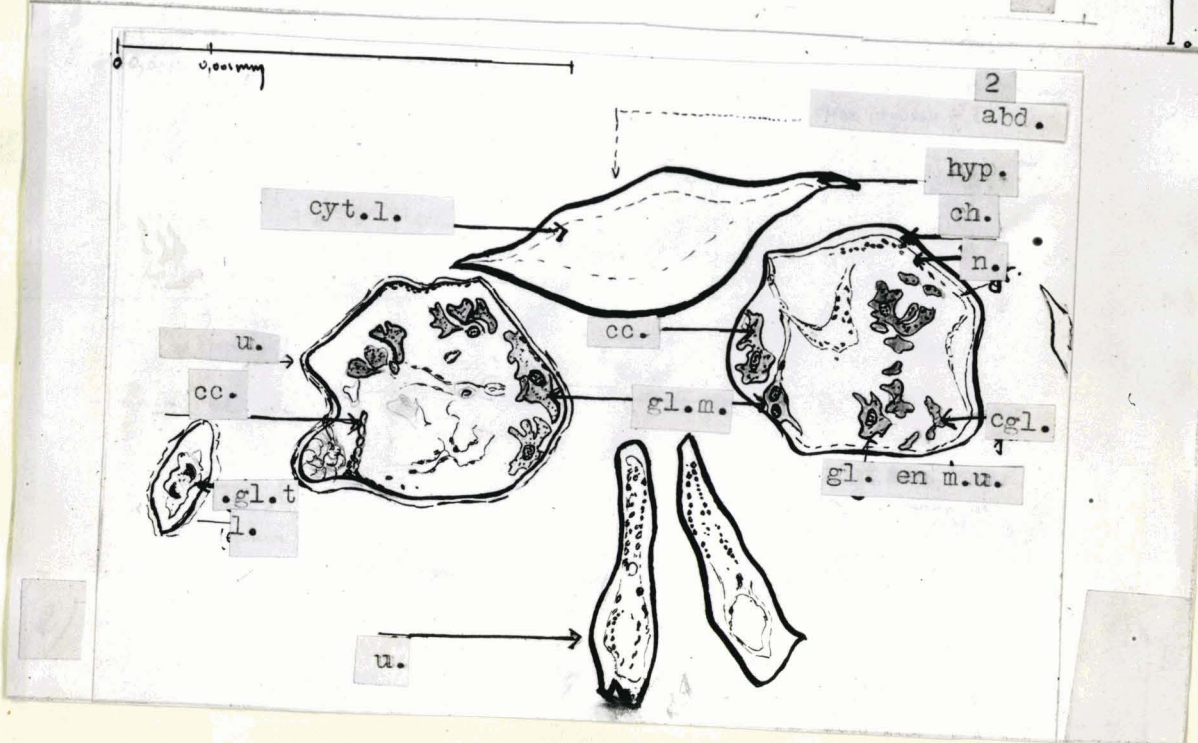
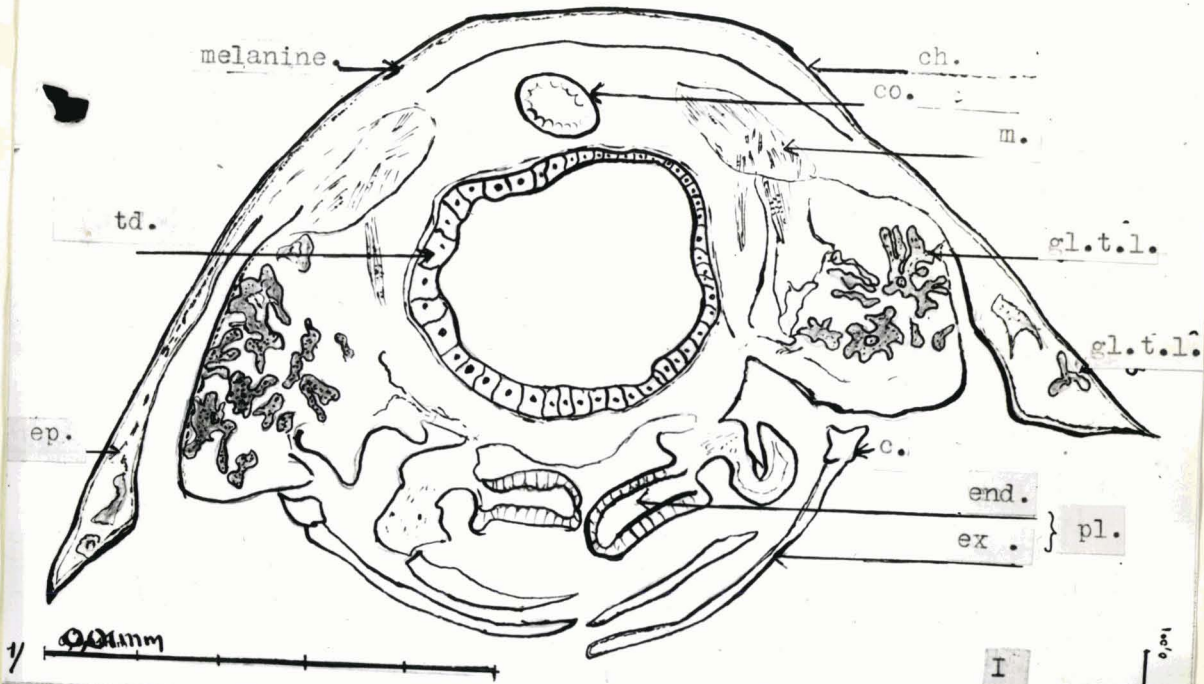
1

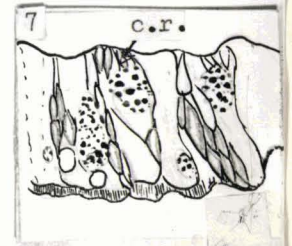
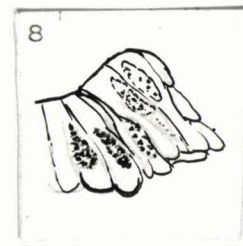
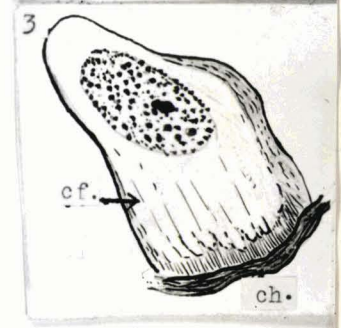
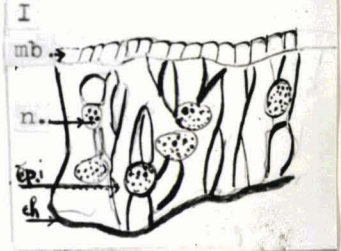
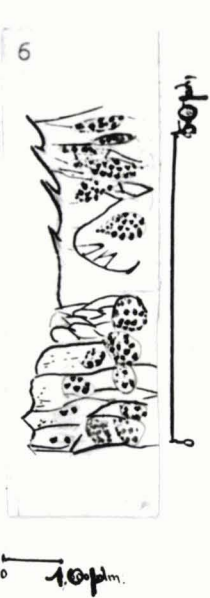
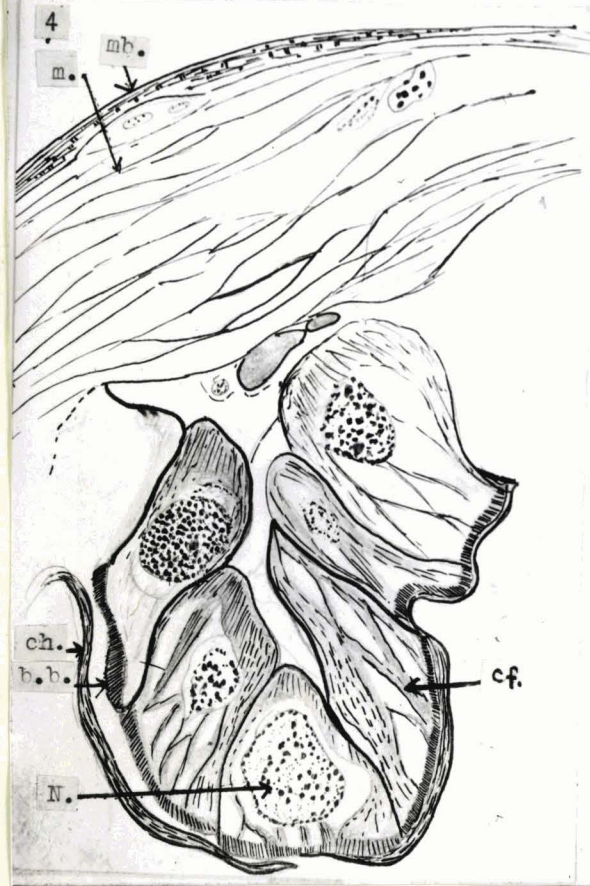
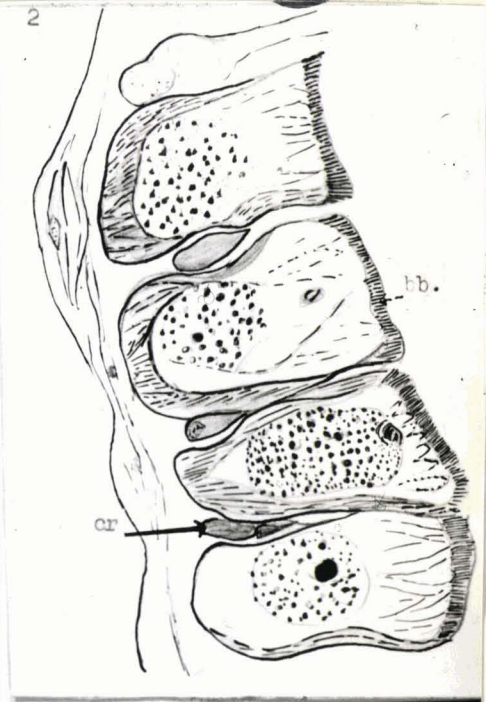
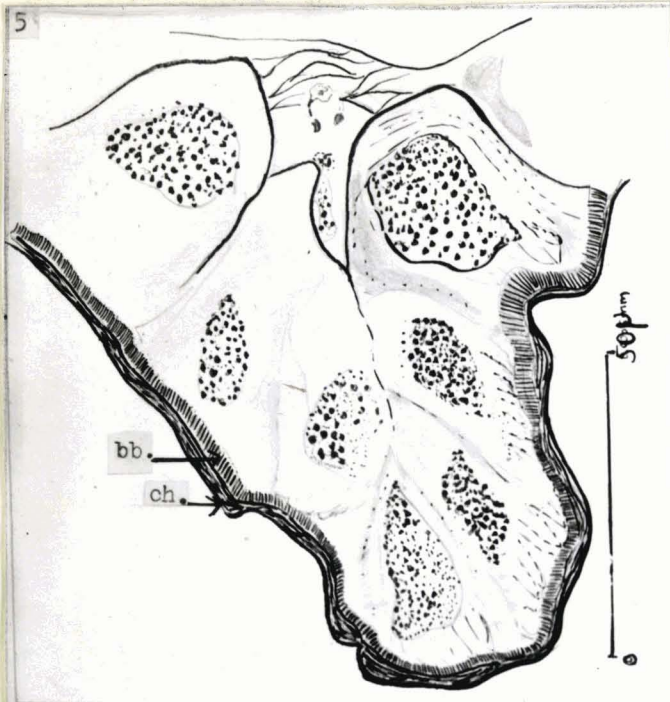


BU
LILLE



coupe abdominale





BU
LILLE

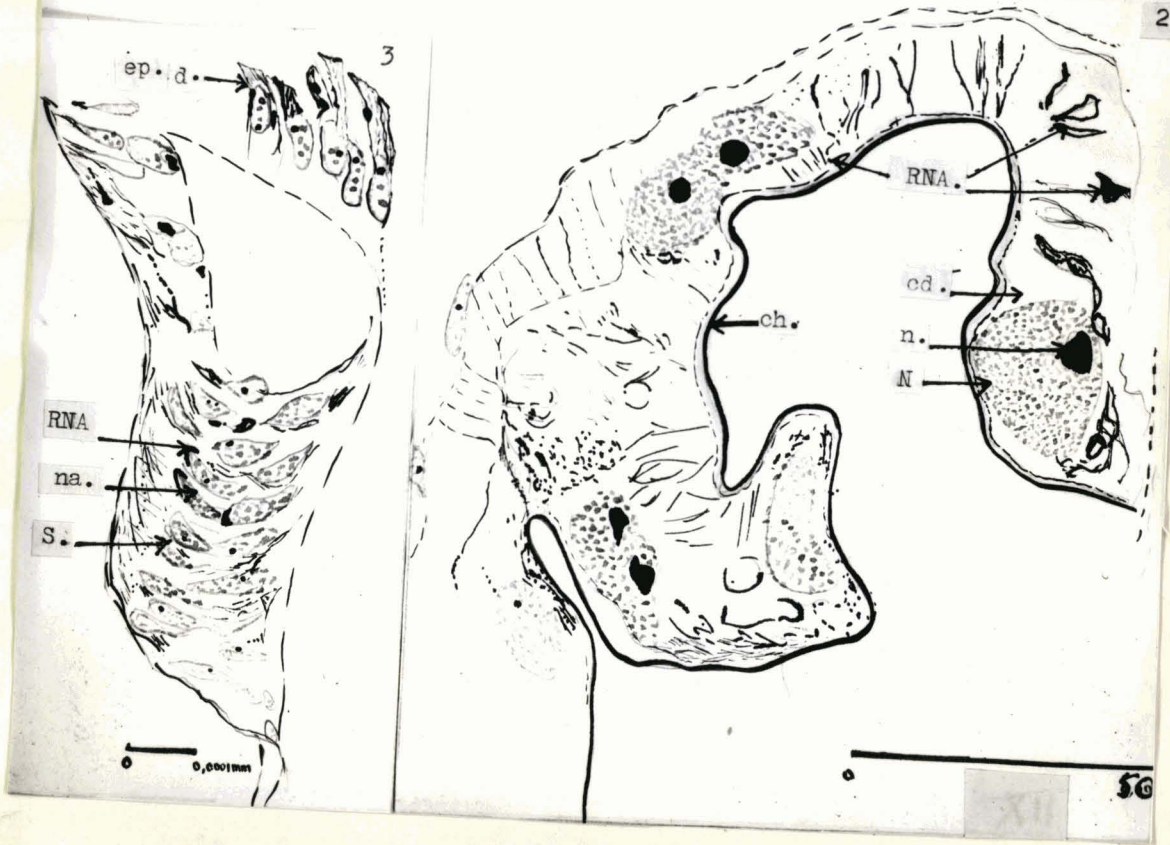
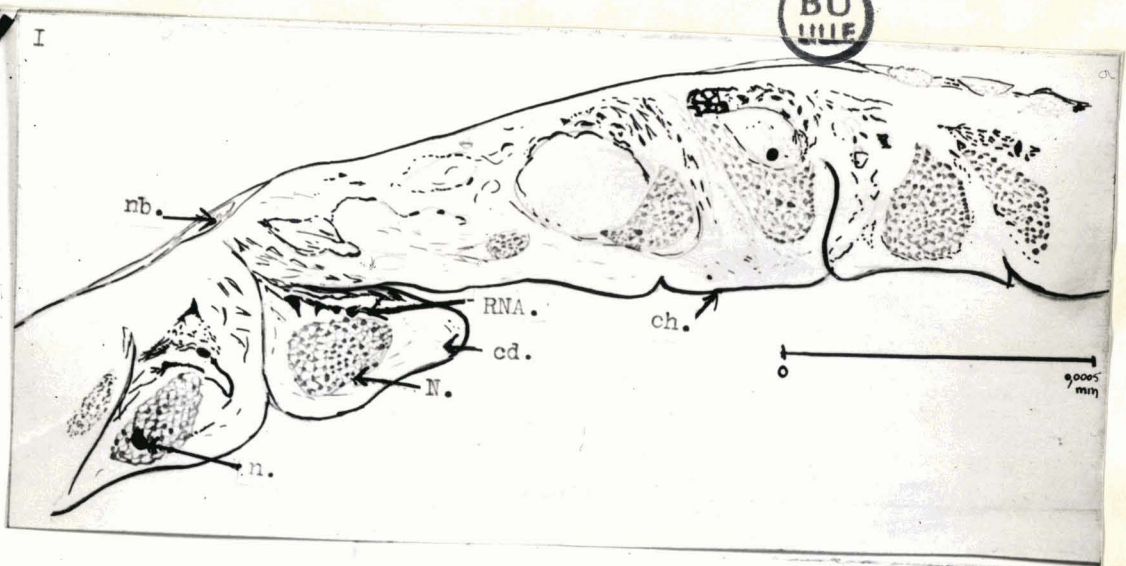


Planche IX.





Planche XI.

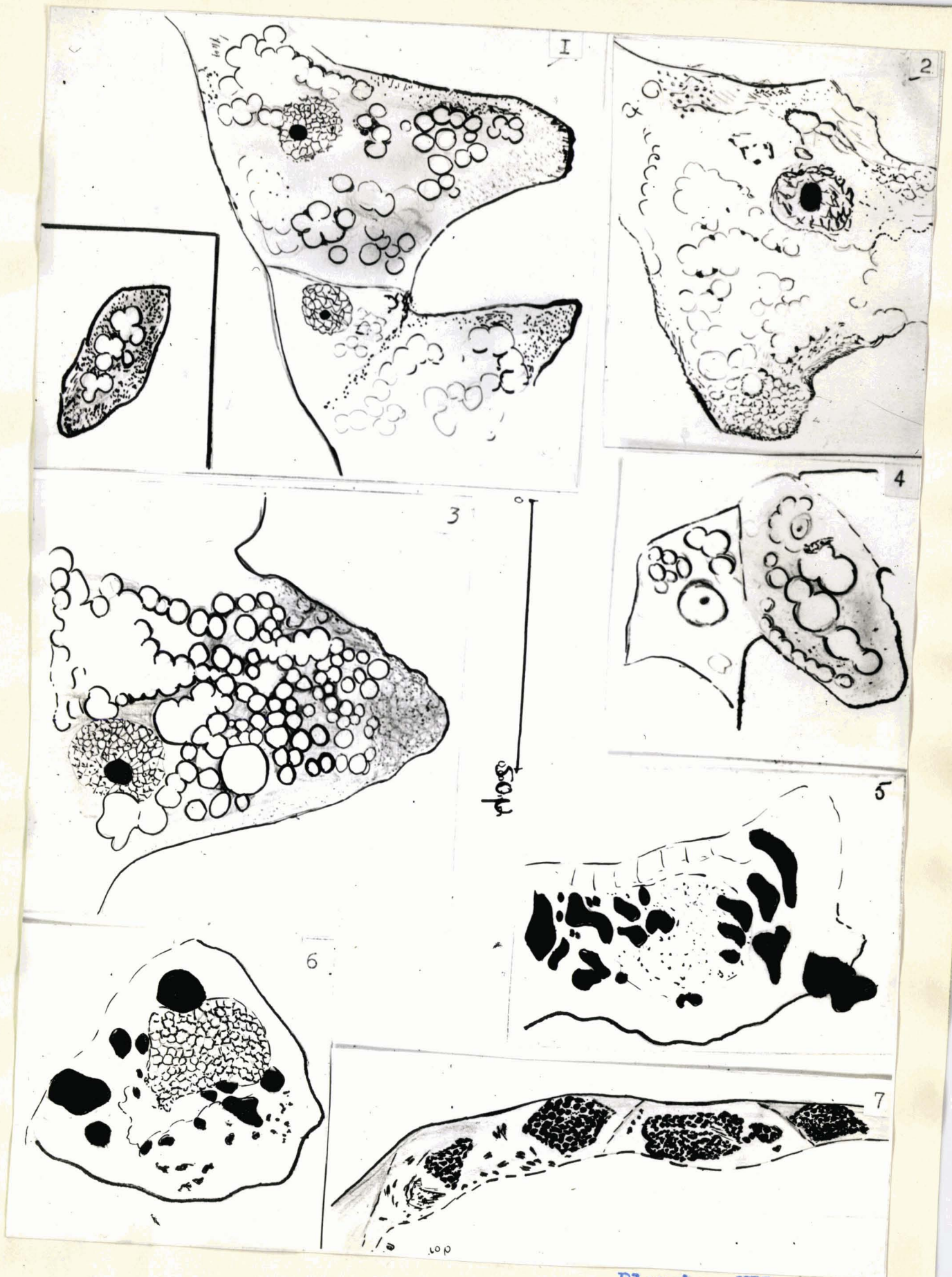


Planche XII.

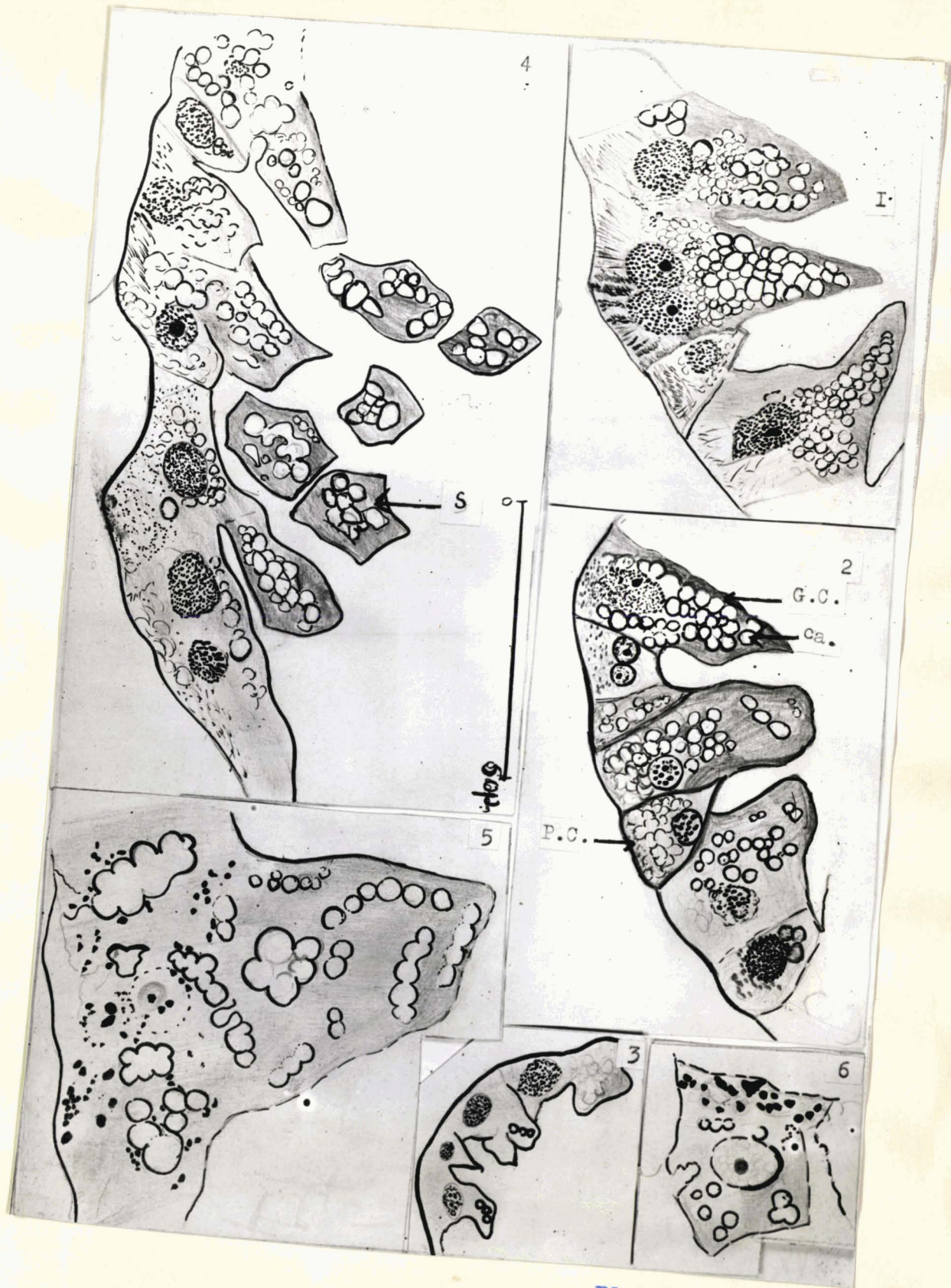
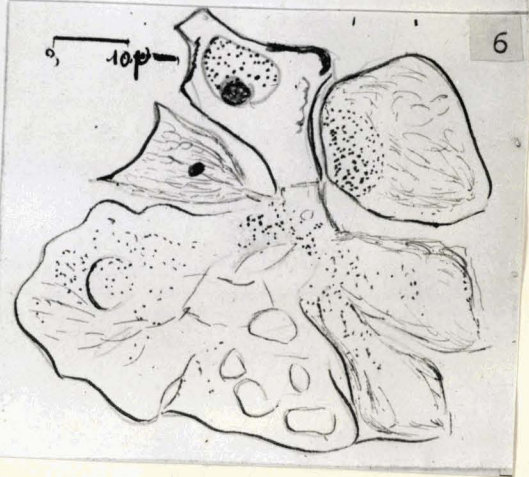
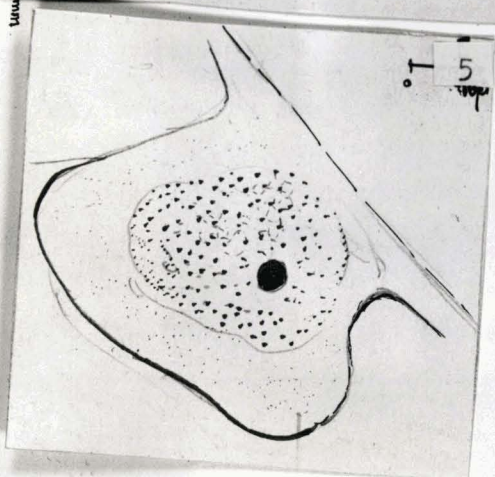
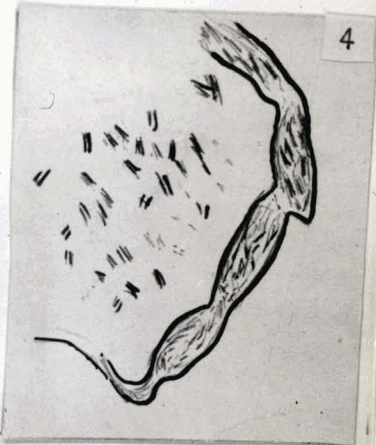
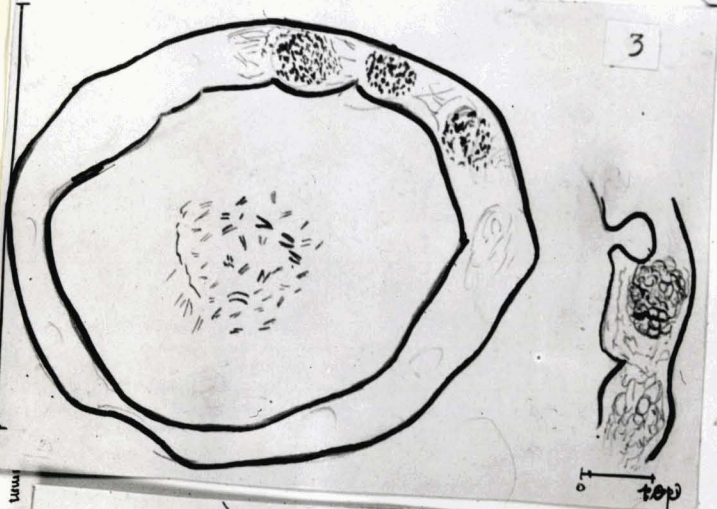
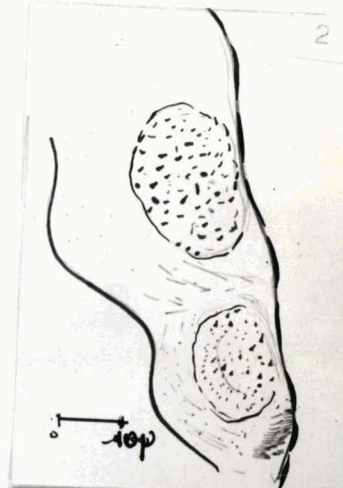
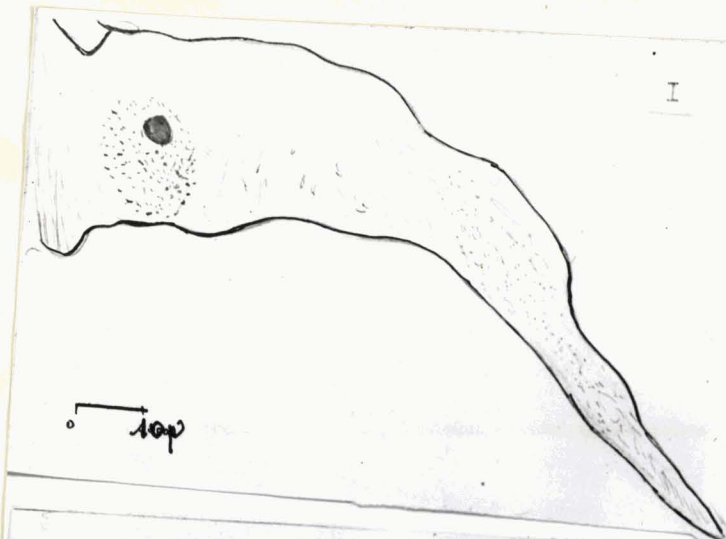


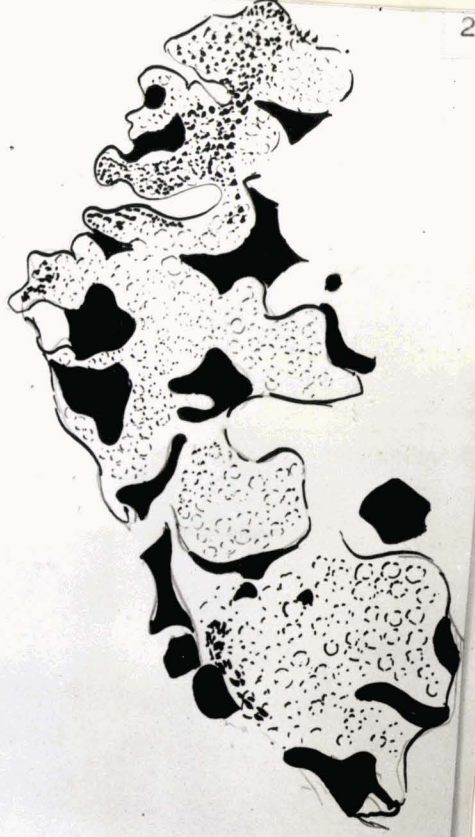
Planche XIII.



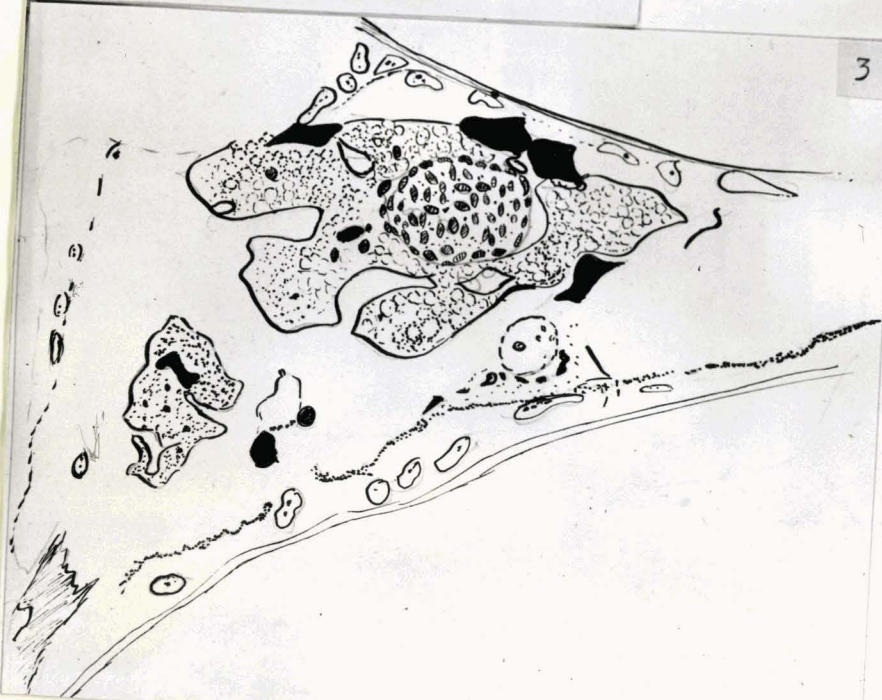
I



2



3

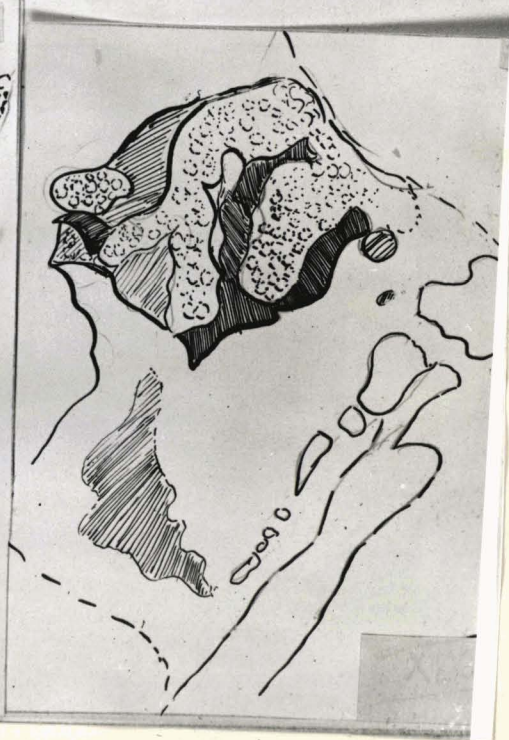
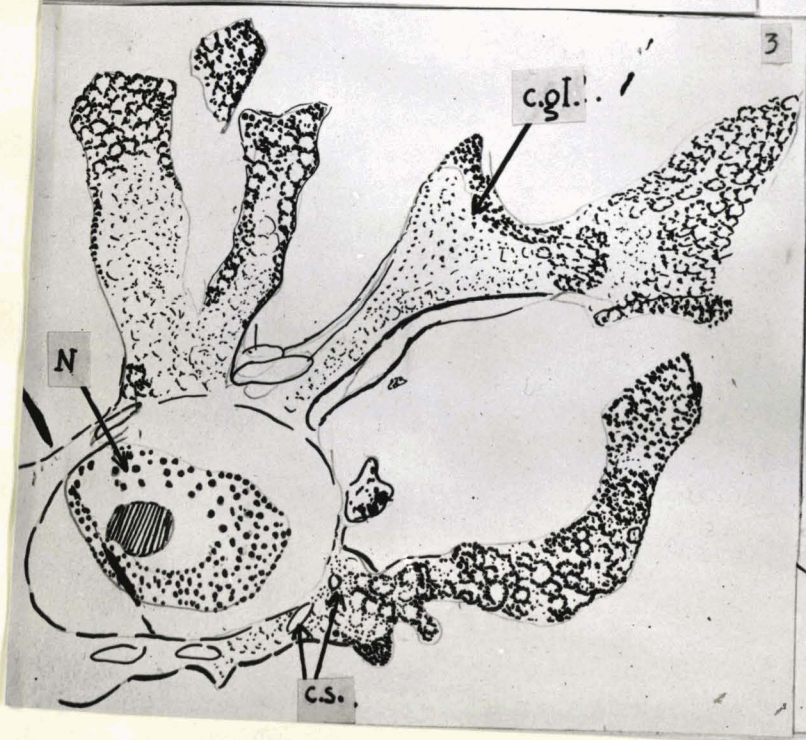
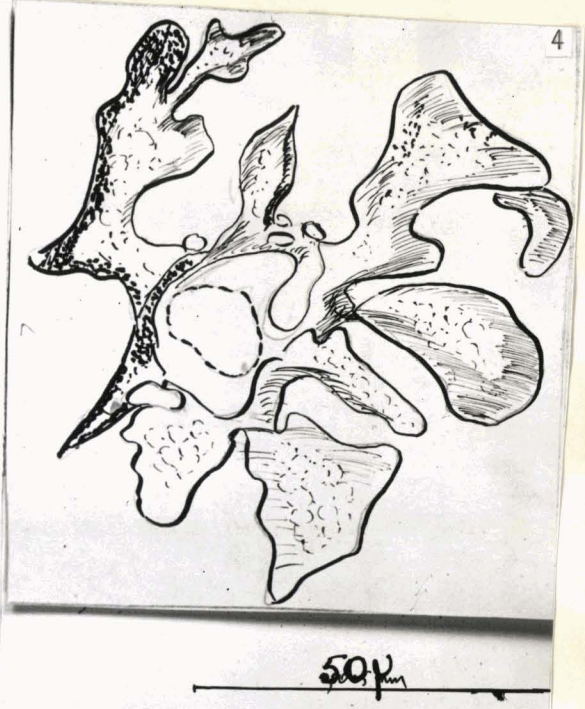
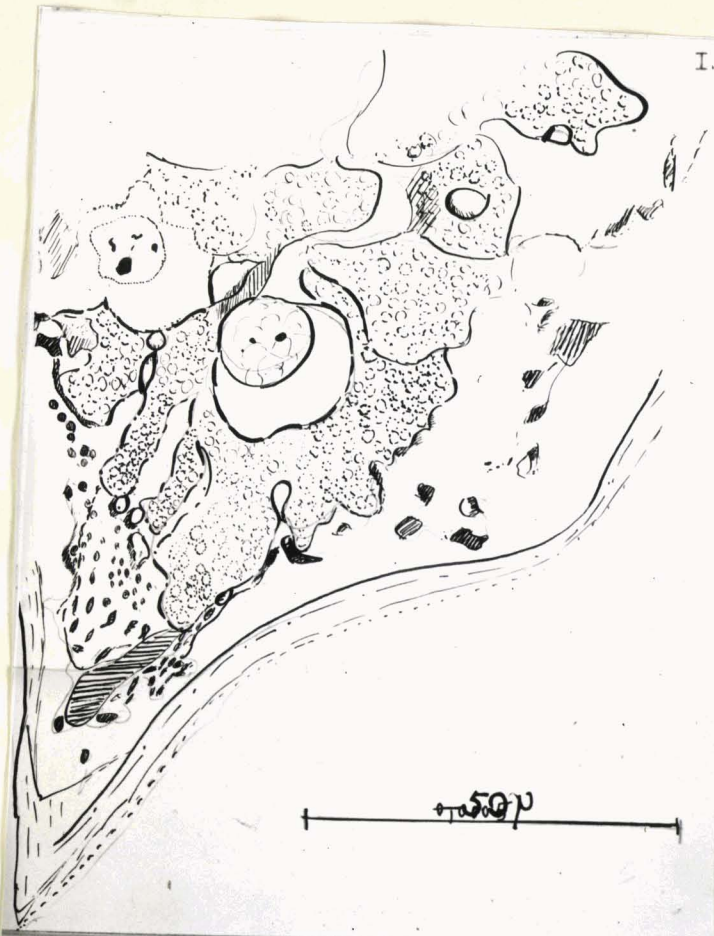


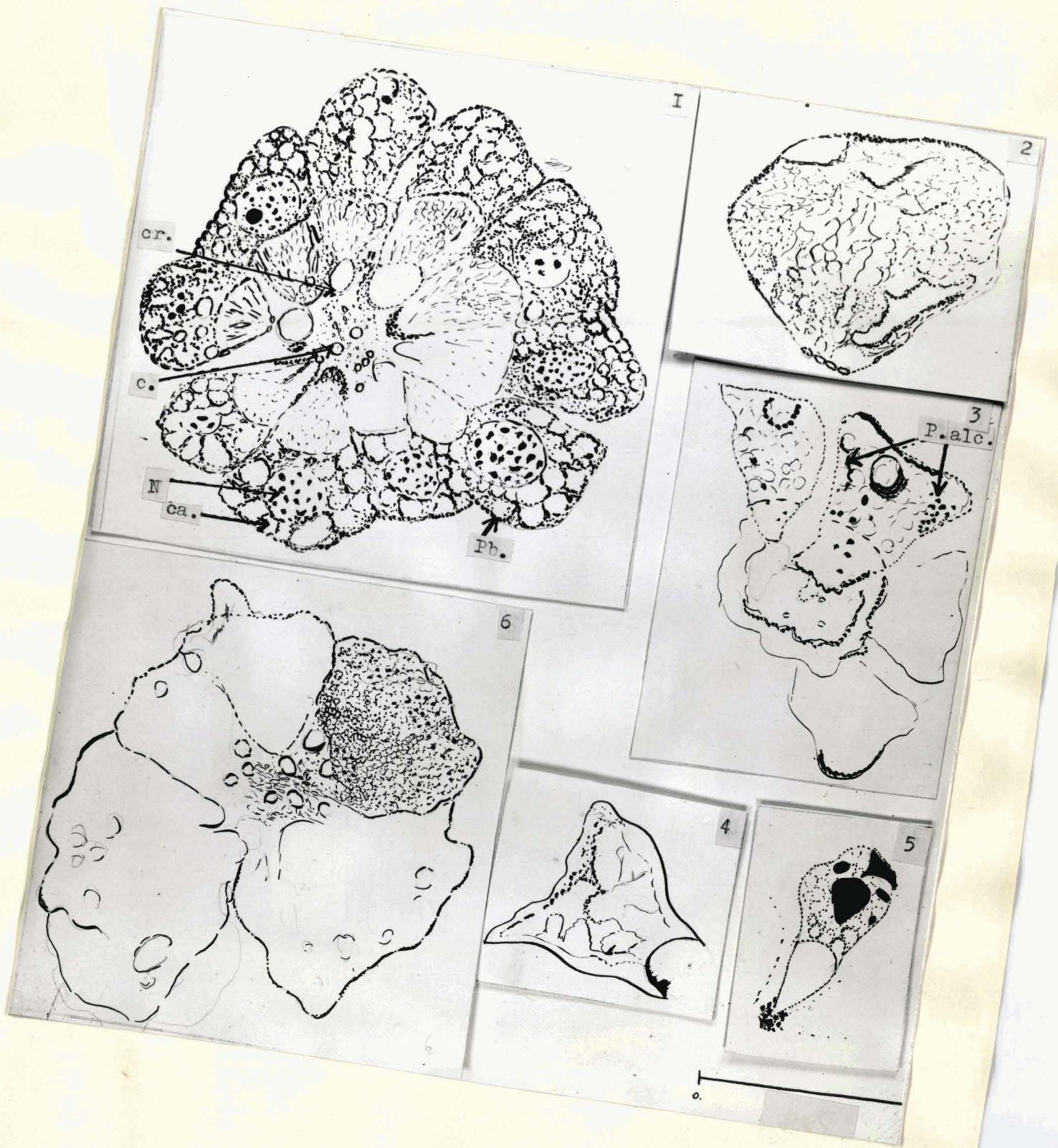
4

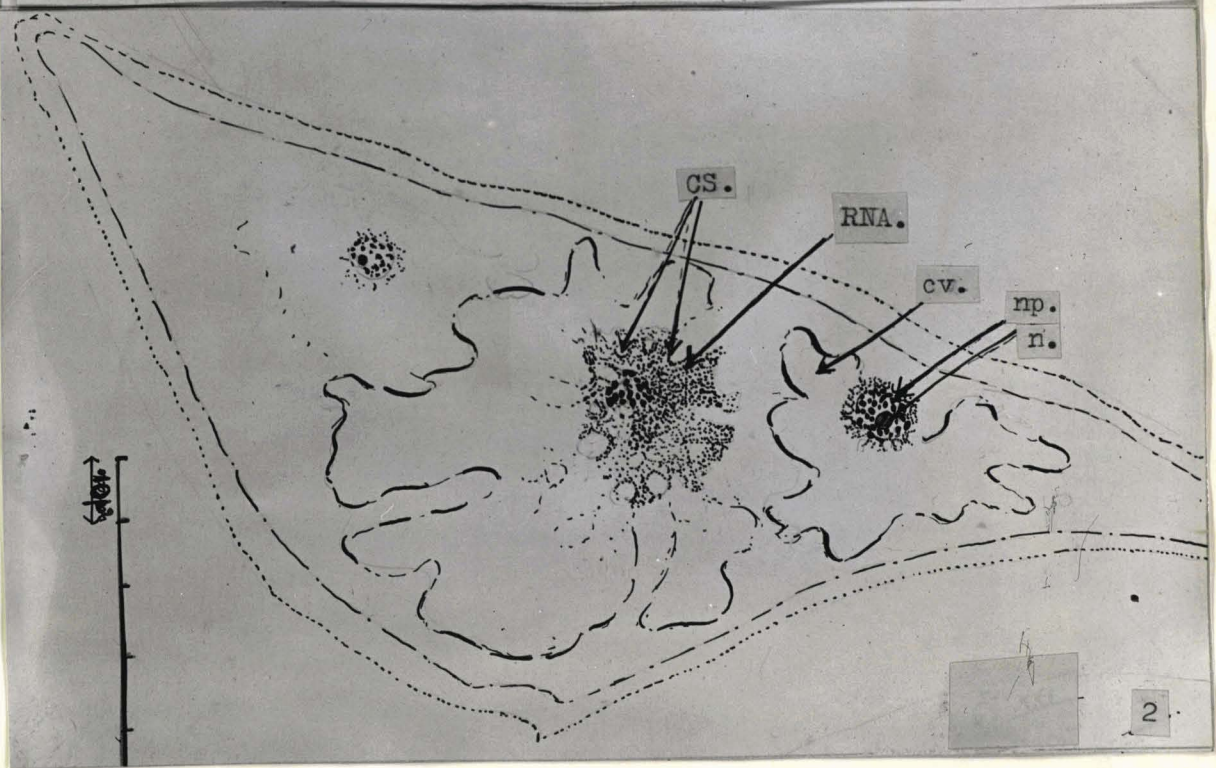
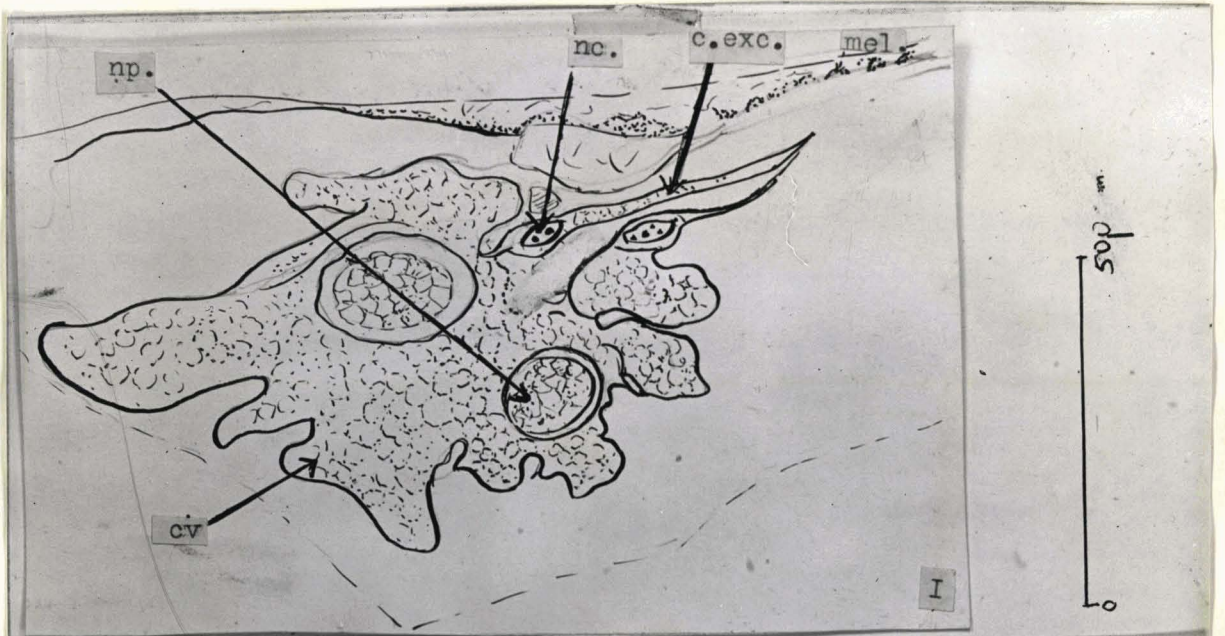


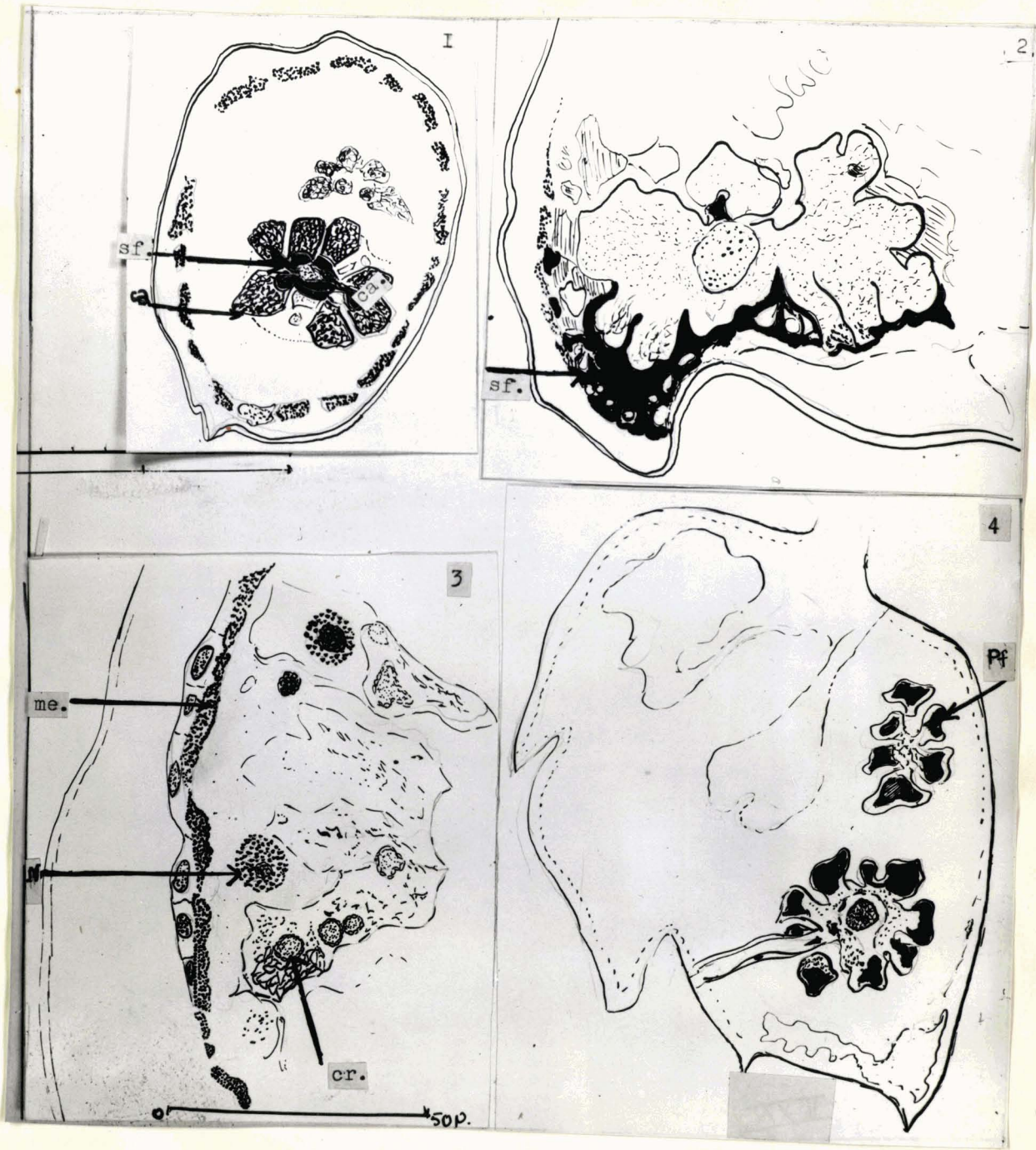
Plaque XV.











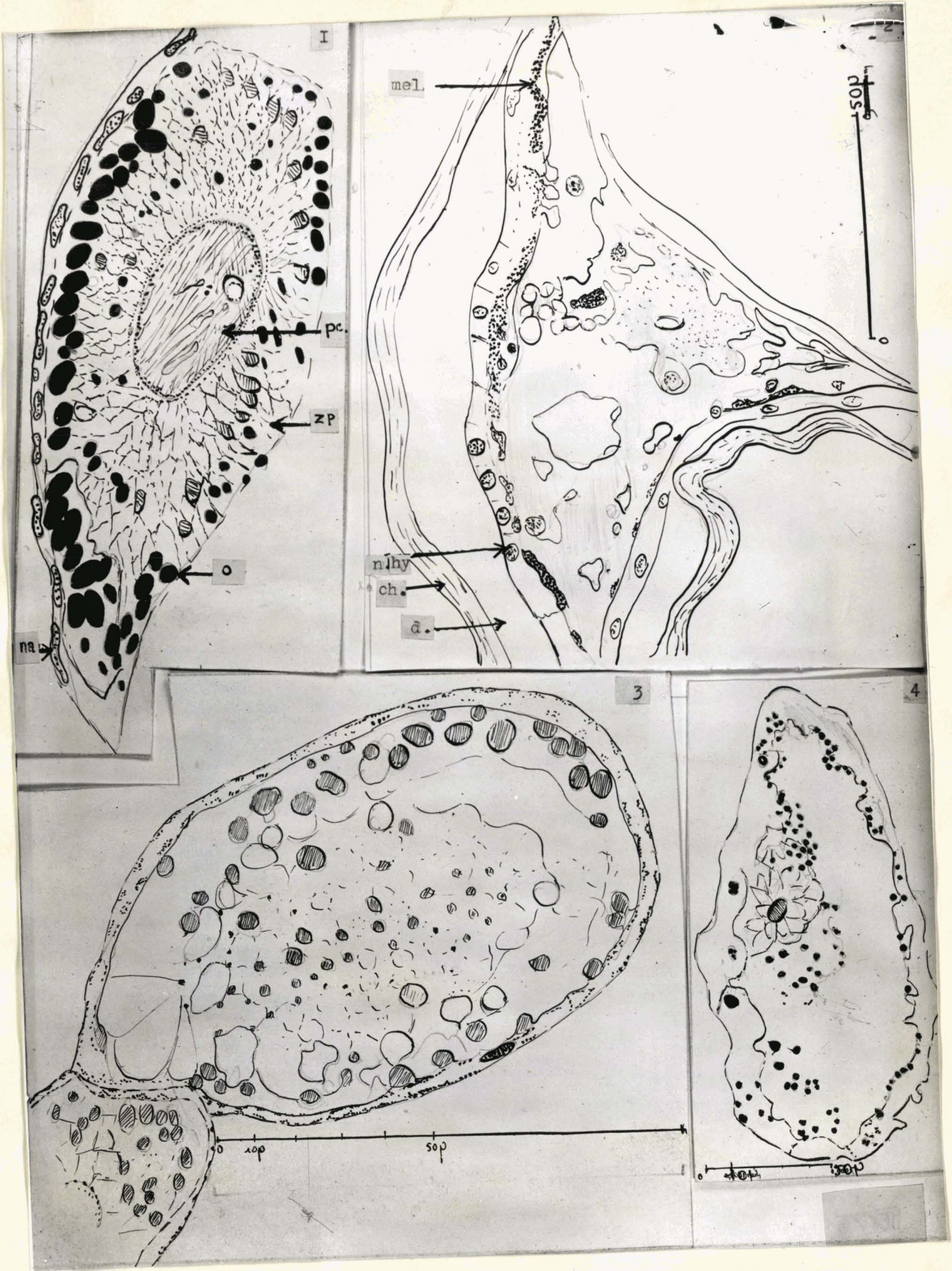


Planche XX.

