

50376
1972
191-2

M E M O I R E

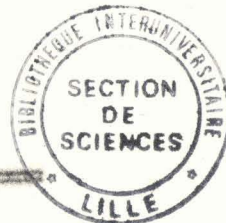
Présenté à la FACULTE des SCIENCES de l'UNIVERSITE de LILLE

pour l'obtention du Diplôme d'Etudes Supérieures de

SCIENCES NATURELLES

par

Thérèse VIGNERSON



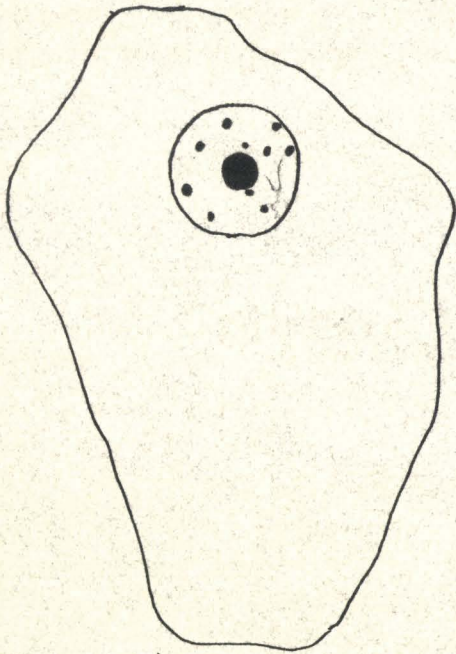
STRUCTURE NUCLEAIRE NUCLEOTYDIALE

Chez VANILLA PLAINIFOLIA GRISEB.

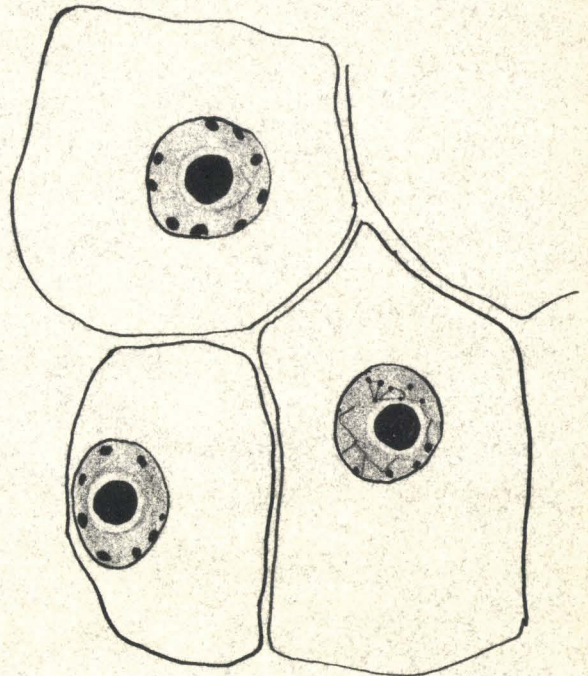
PLANCHES

Mémoire soutenu le 7 Mai ?
devant la commission d'examen

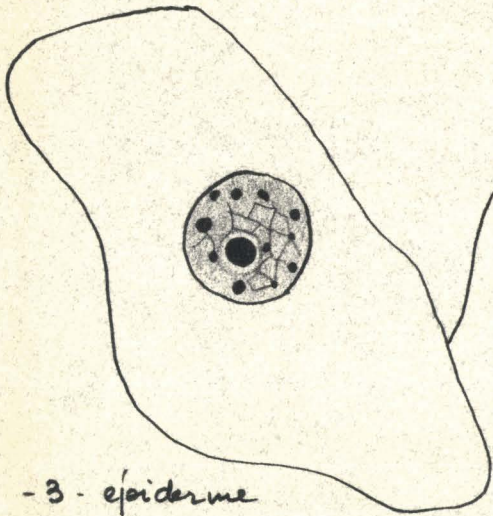
I Noyaux dans les différents territoires de la racine. pl I
G: 2000



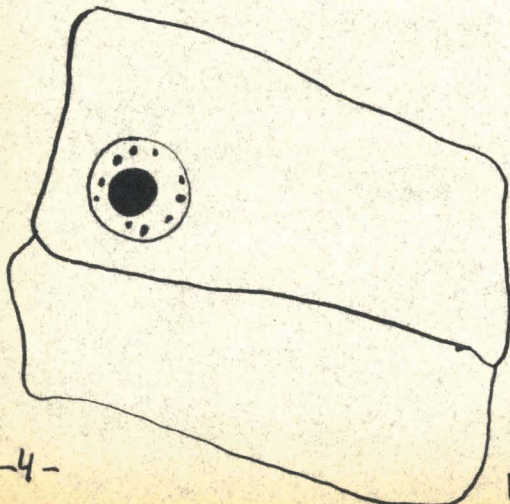
-1- coiffe



-2- région méristématique

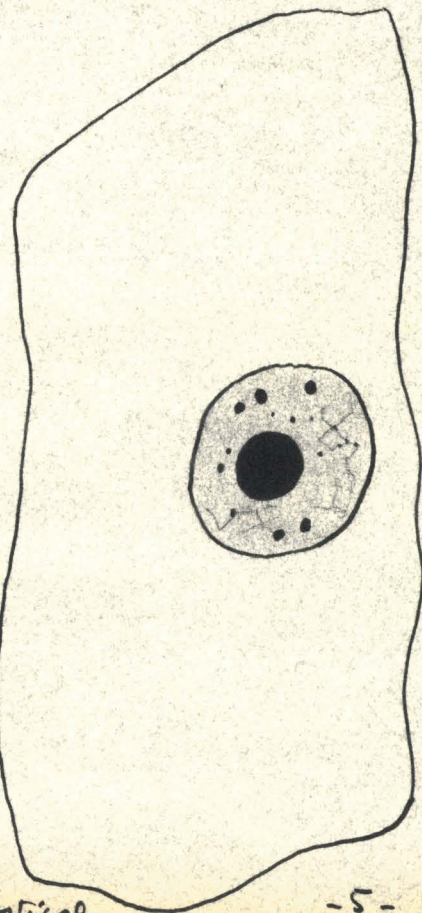


-3- epiderme

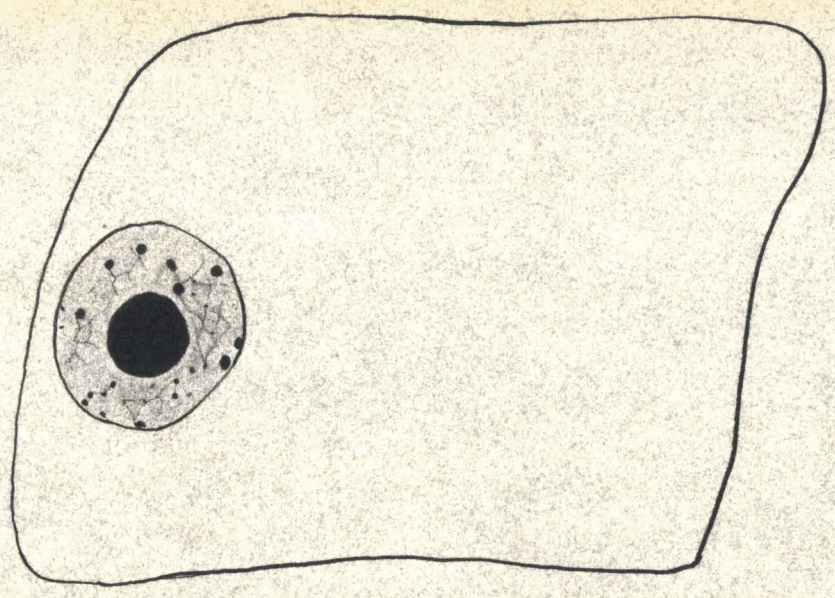


-4-

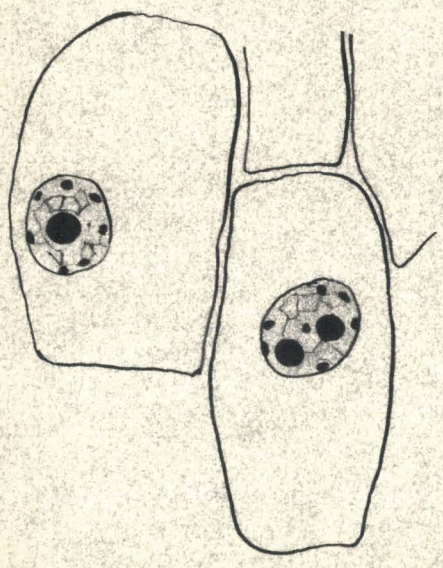
parenchyme cortical



-5-



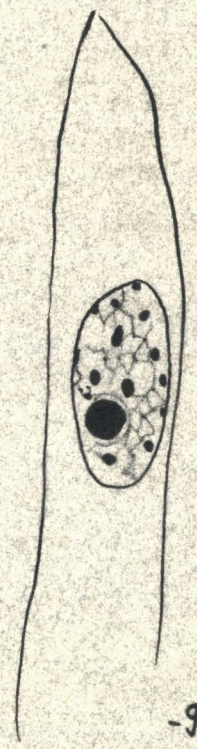
-6- cellule à raphides.



-7-

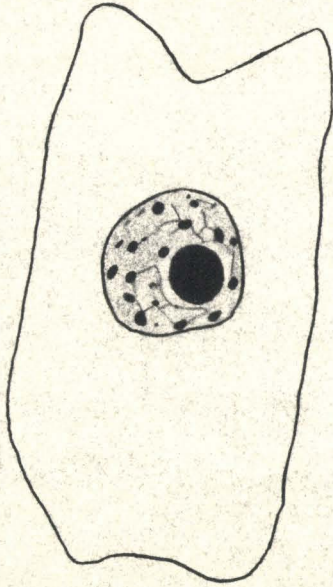


-8-

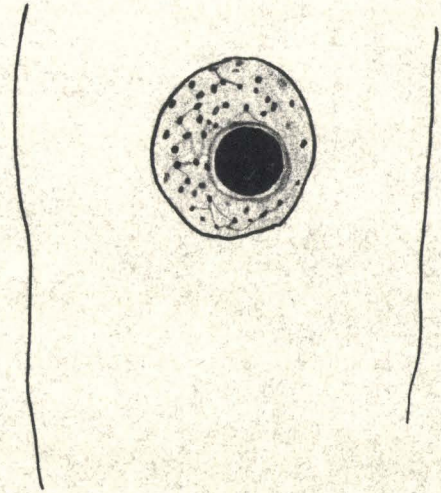


-9-

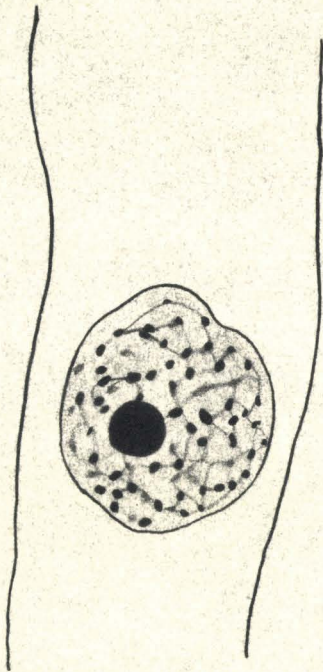
Region vasculaire



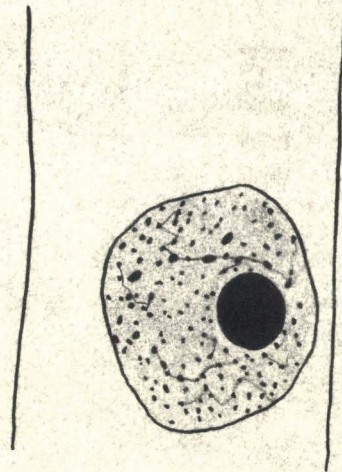
-10-



-11-

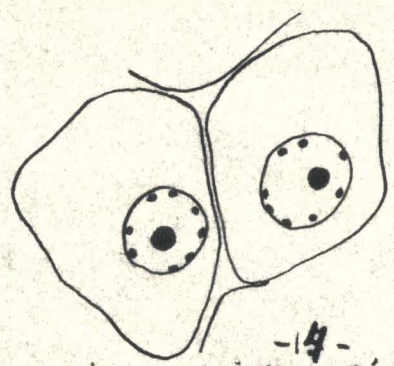


-12-



-13-

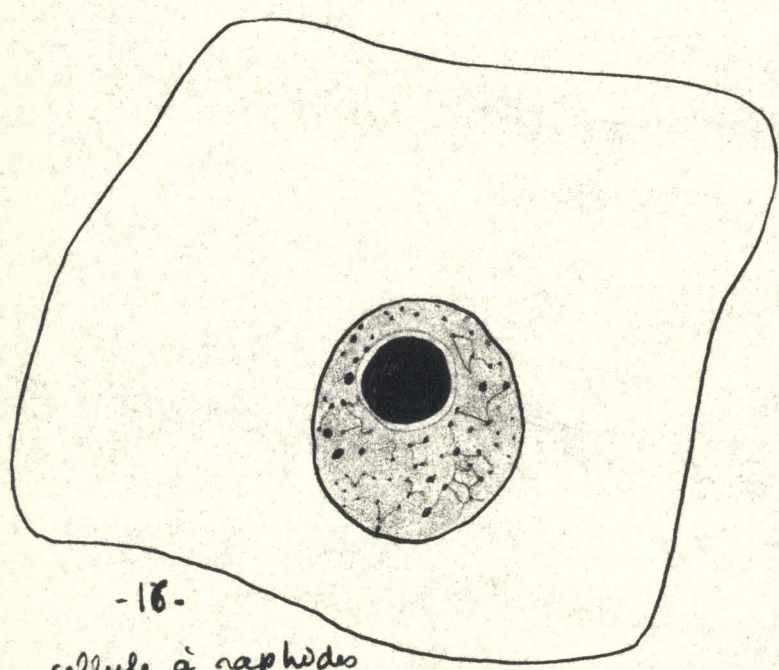
II Structure nucléaire pendant le jeûne



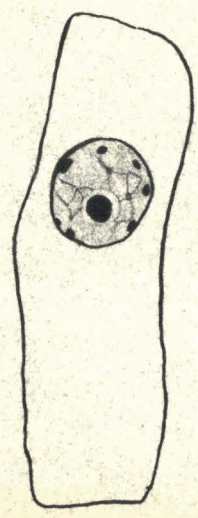
-14-
région méristématique



-15-
parenchyme cortical

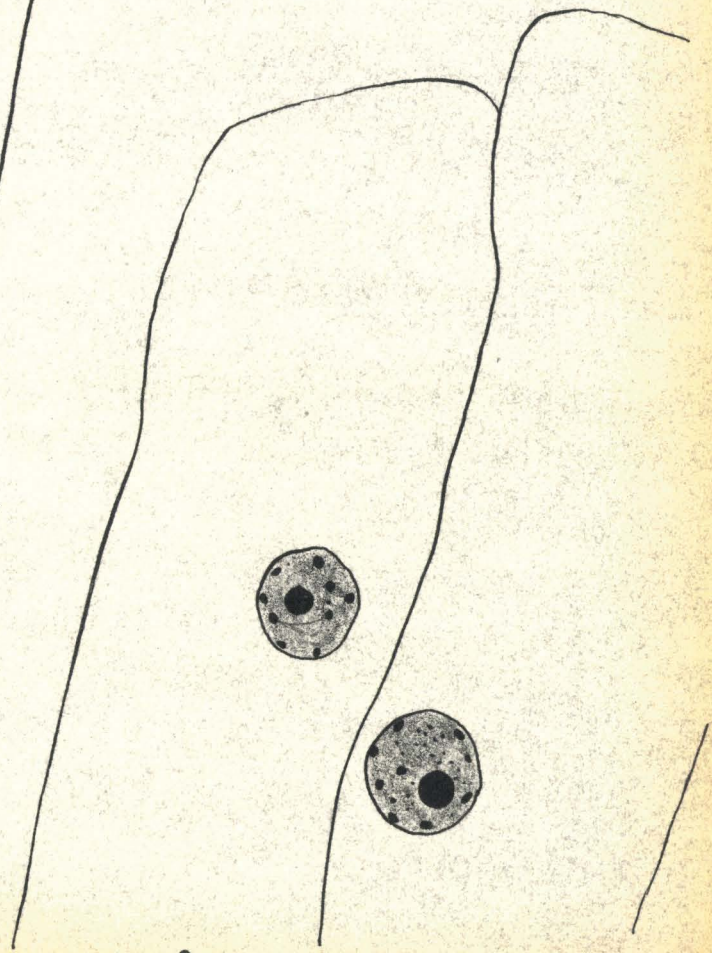


-16-
cellule à raphides

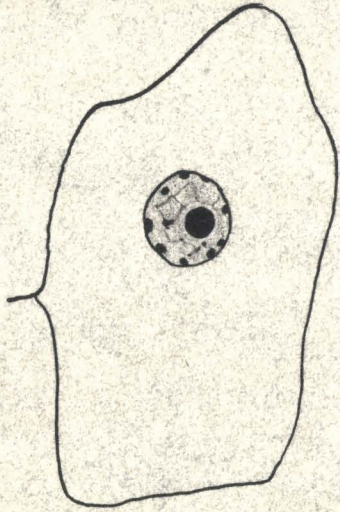


-17-

région vasculaire
2 jours de jeûne

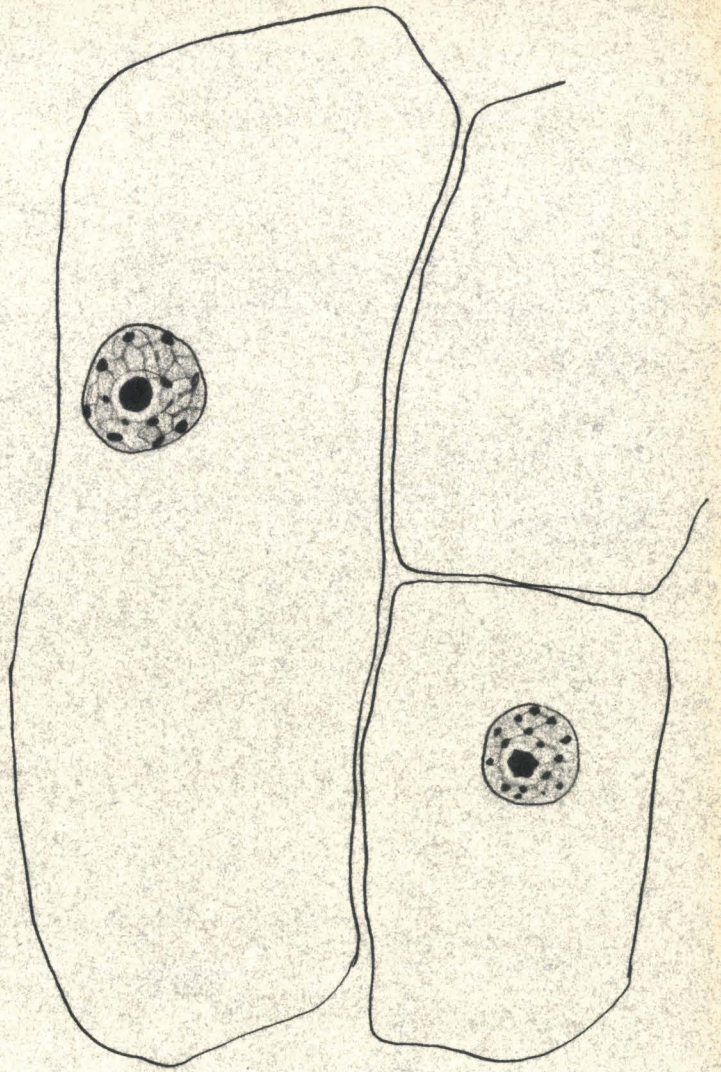


-18-

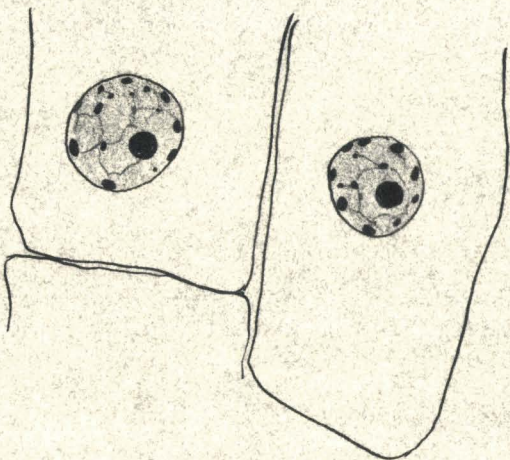


-19-

3 jours de jeûne



-20-



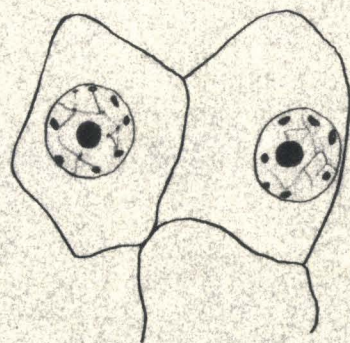
-21-

4 jours de jeûne

III Nutrition par le saccharose

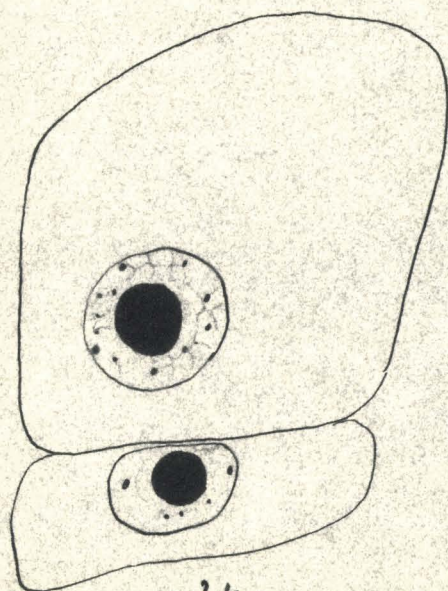


-22-

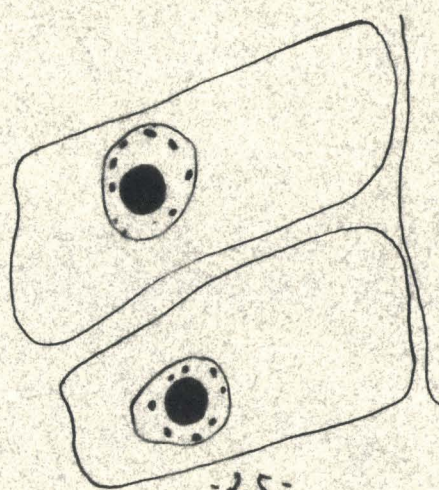


-23-

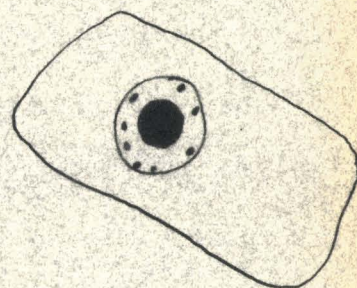
Région méristématique



-24-

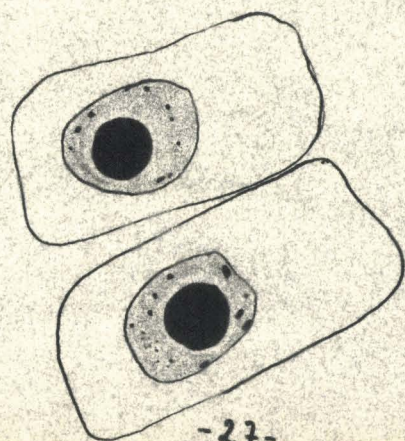


-25-

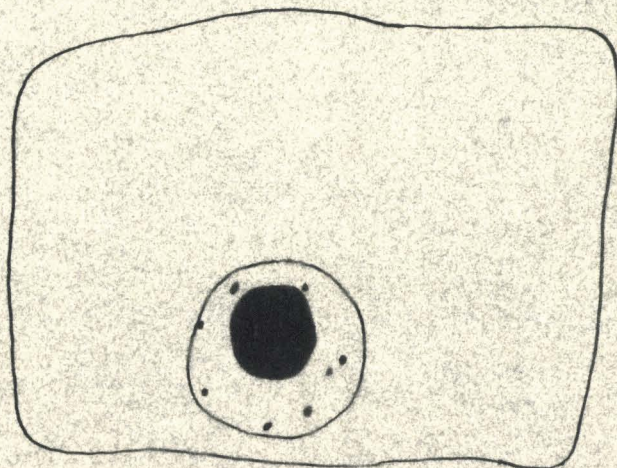


-26-

Cellules parenchymateuses

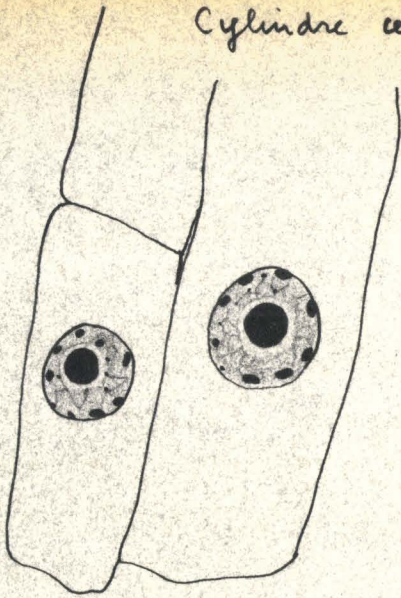


-27-

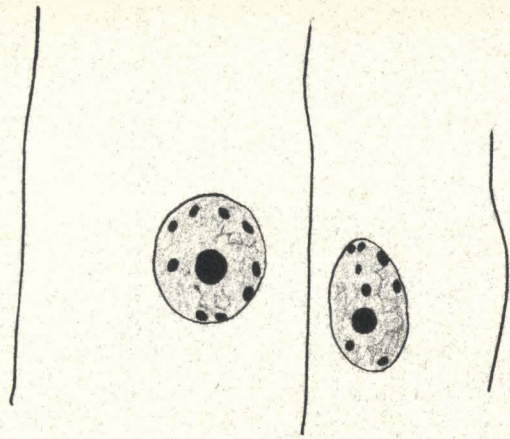


-28-

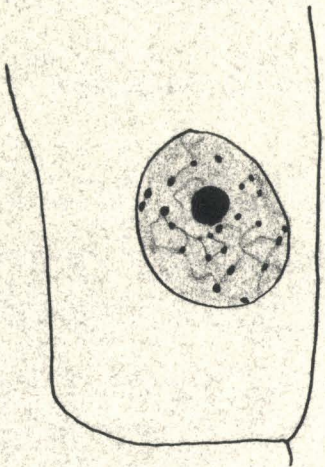
Cellules à raphides



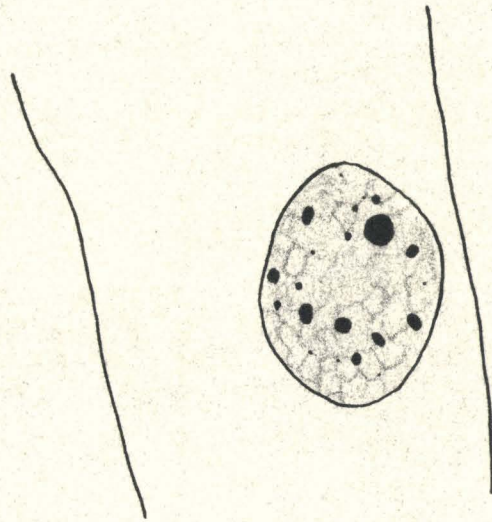
- 29 -



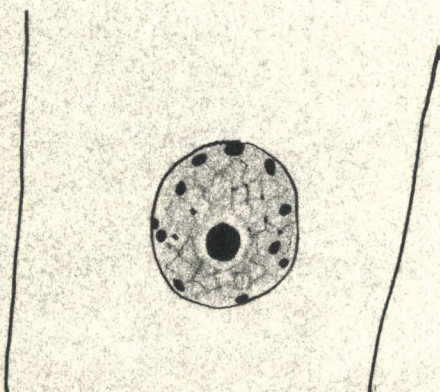
- 30 -



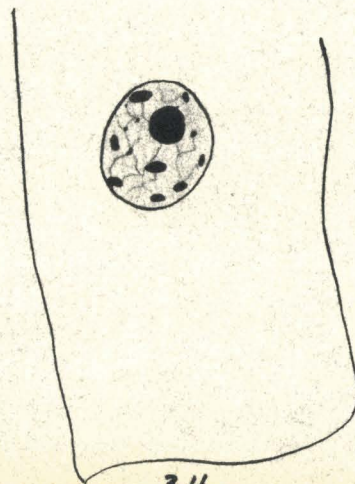
- 31 -



- 32 -



- 33 -

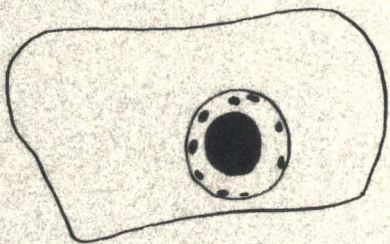


- 34 -

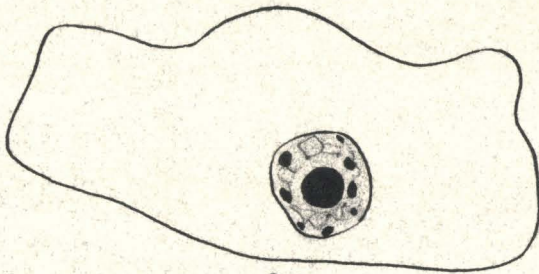


- 35 -

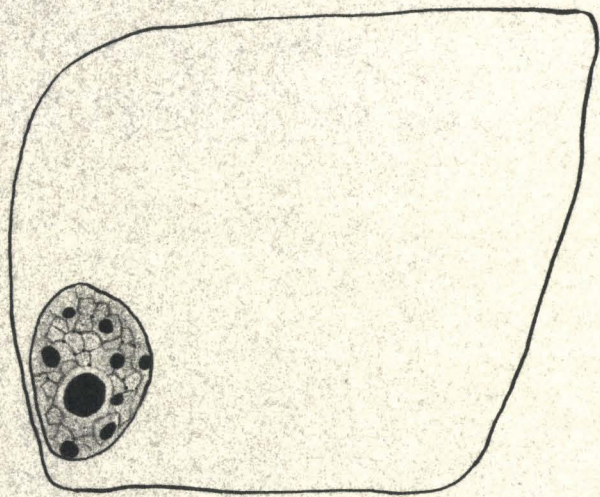
IV Survie par le saccharose



- 36 -

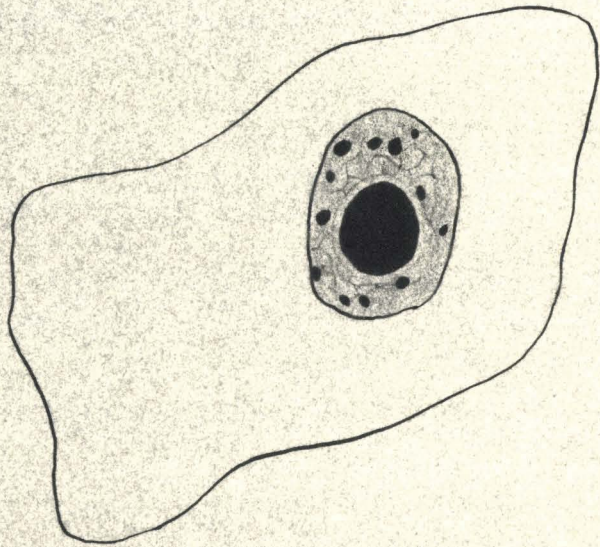


- 37 -



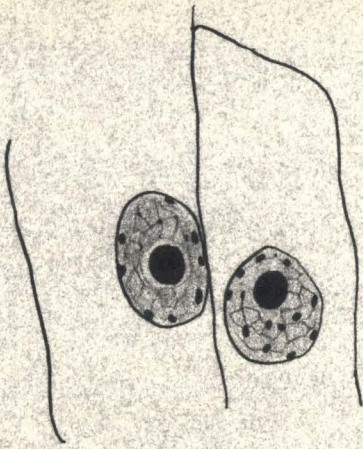
- 38 -

parenchyme cortical

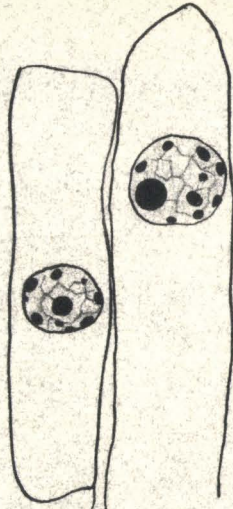


- 39 -

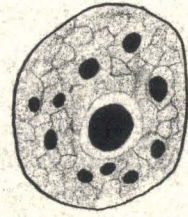
cellule à raphides



- 40 -

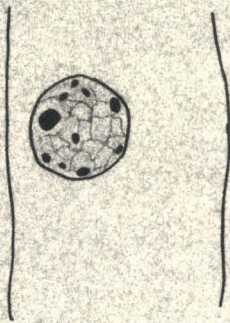


- 41 -



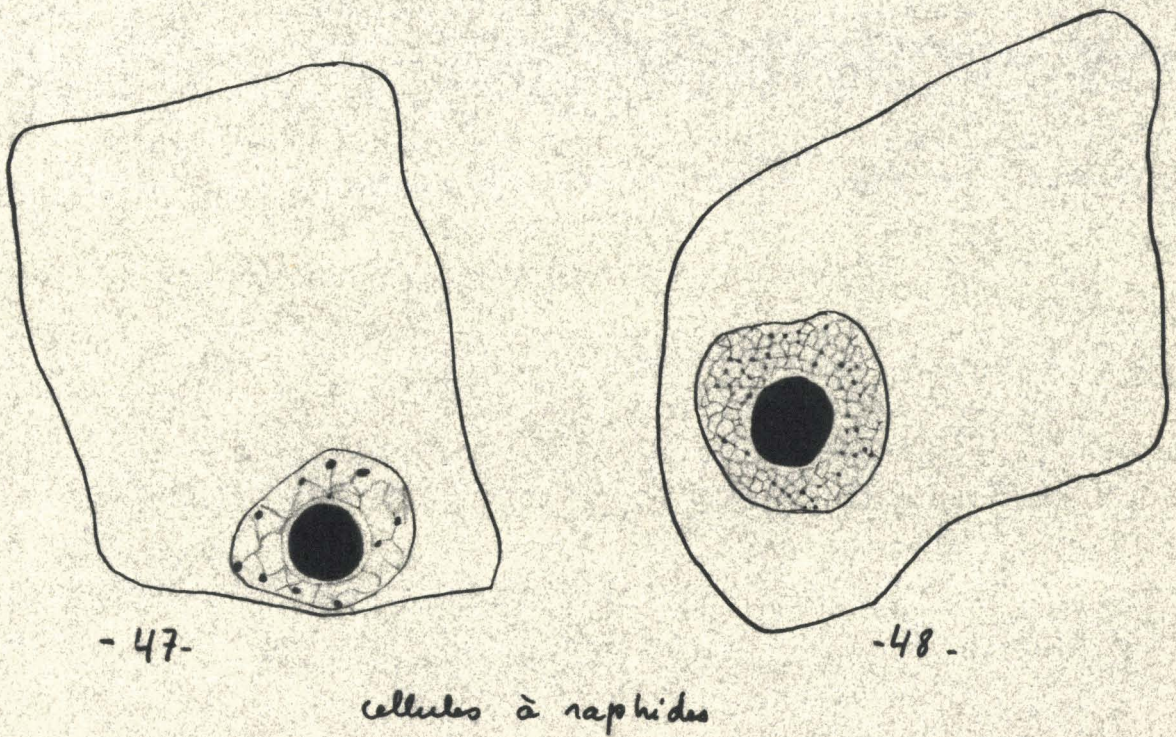
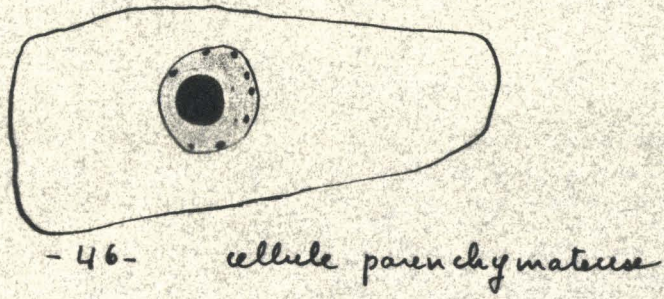
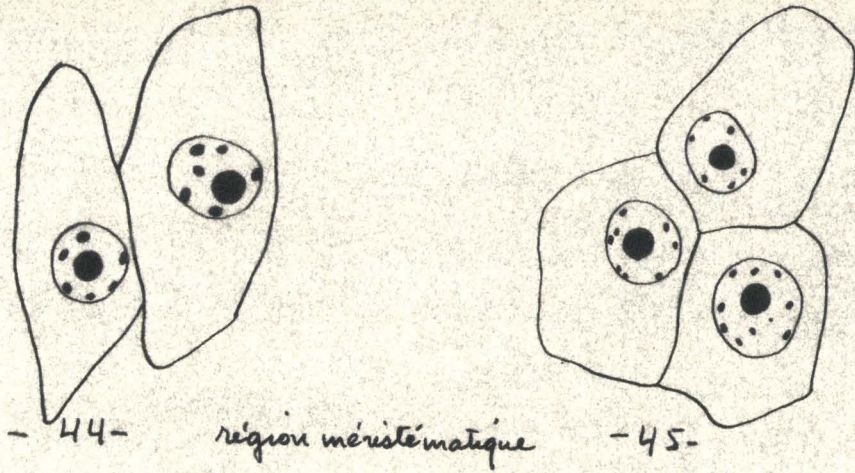
- 42 -

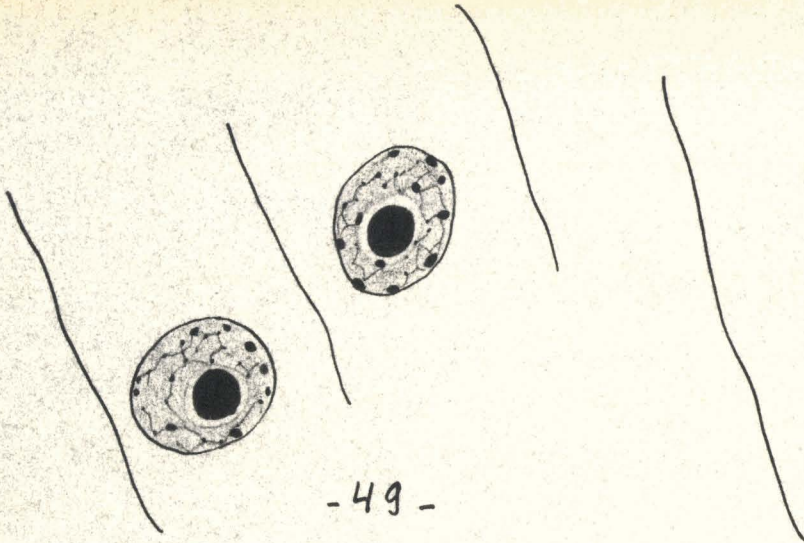
Cylindre central



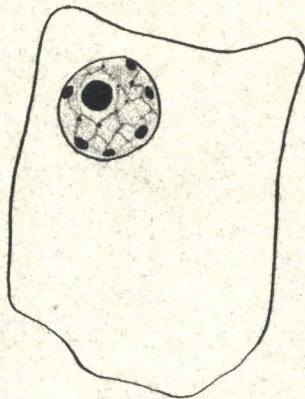
- 43 -

V Action de l'acide ascorbique

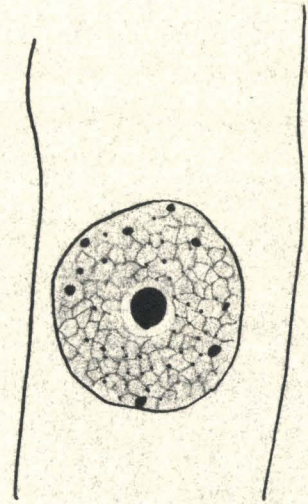




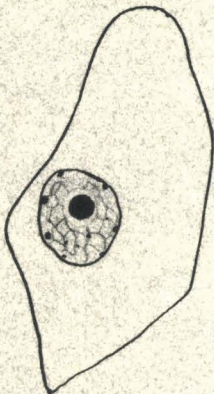
-51-



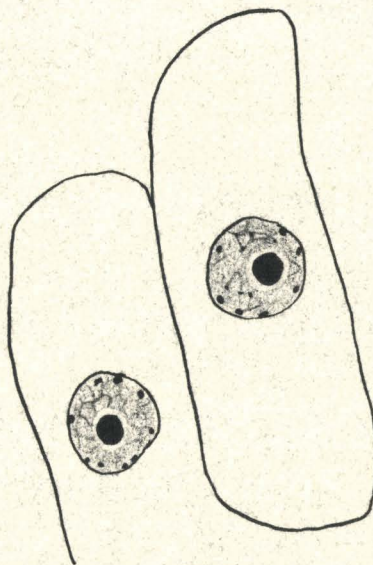
-52-



-53-

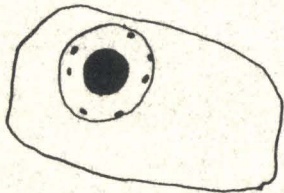


-54-

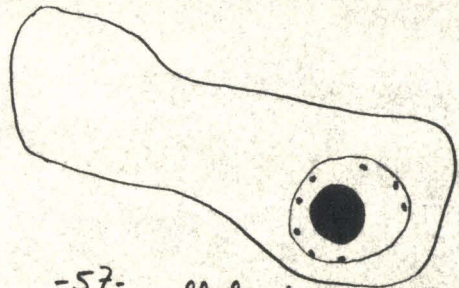


-55-

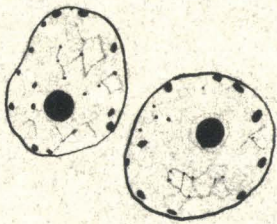
VI Survie par l'acide ascorbique



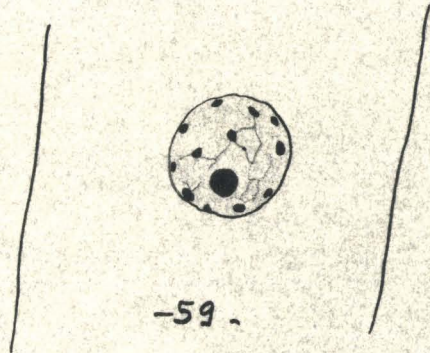
-56- cellule parenchymateuse



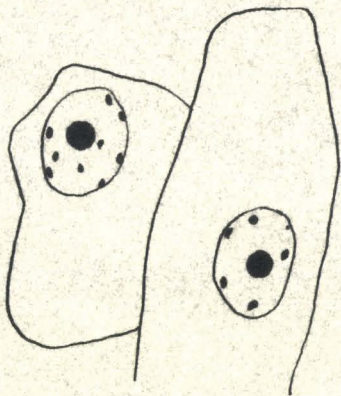
-57- cellule à raphides



-58-



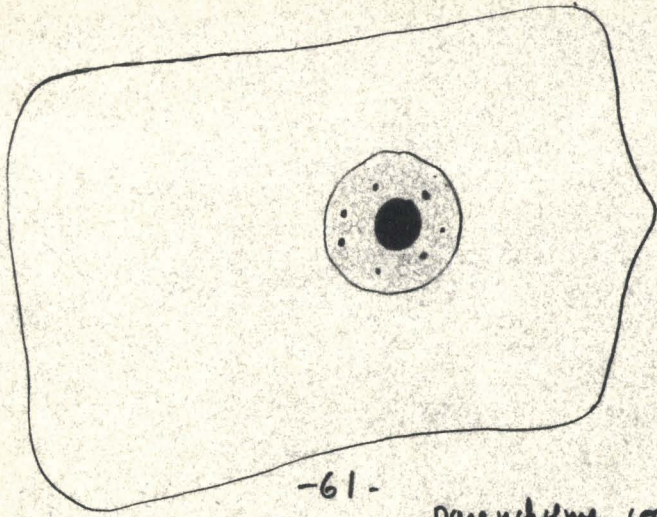
-59-



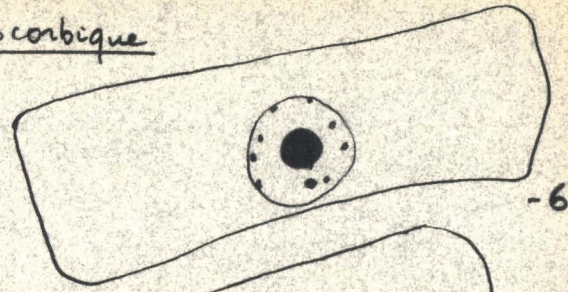
-60-

cylindre central

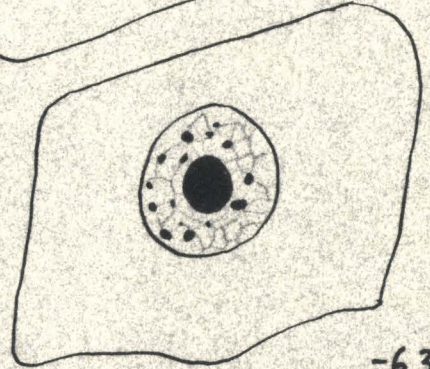
VII Surnie par le saccharose
l'acide ascorbique



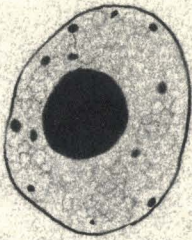
-61- parenchyme cortical



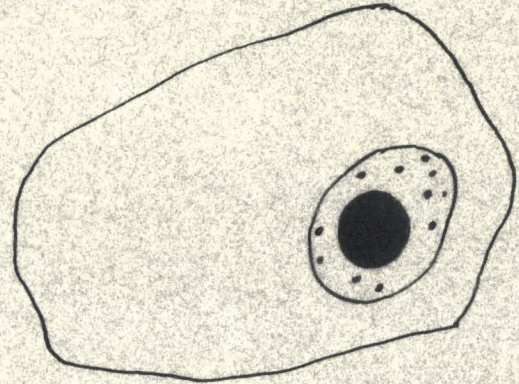
-62-



-63-



-64- cellules à raphides



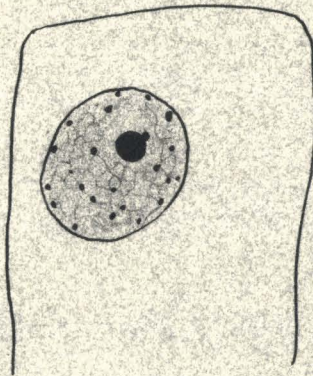
-65-



-66-



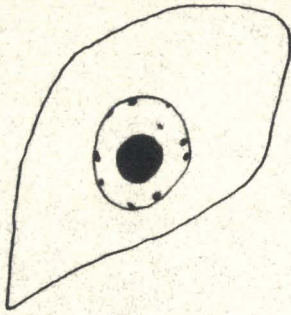
-67-



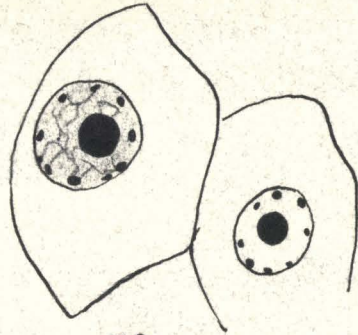
-68-

cylindre central

VIII Action de l'acide indol β acétique



- 69 -

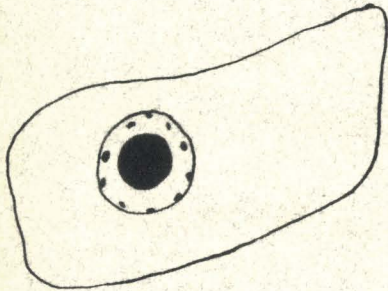


- 70 -

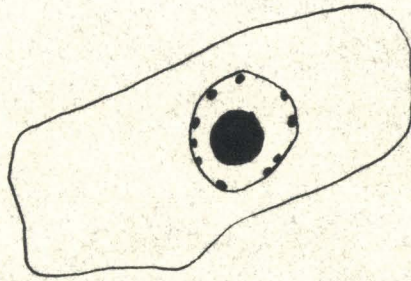
Région méristématique



- 71 -

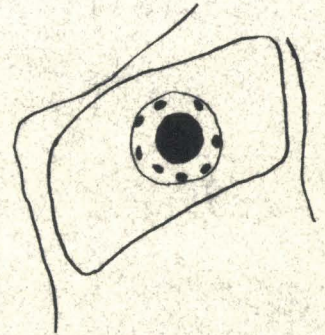


- 72 -

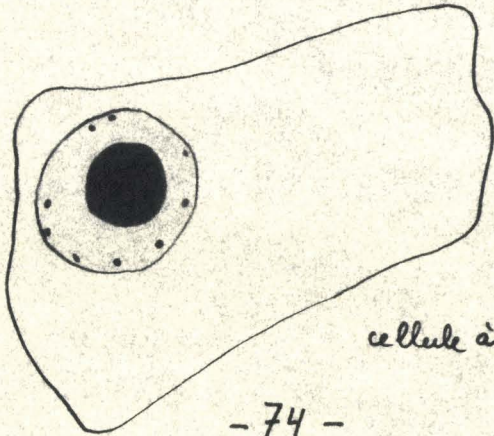


- 73 -

Cellules parenchymateuses

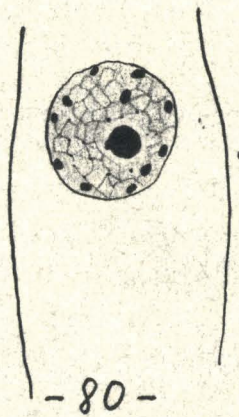
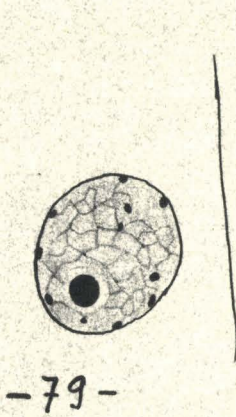
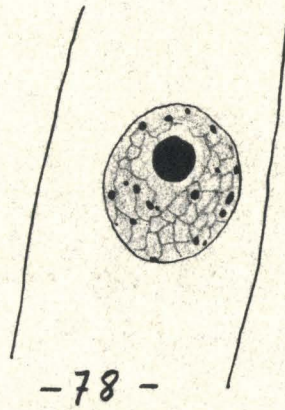
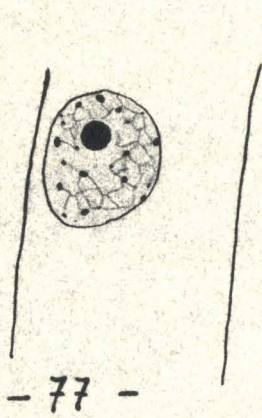
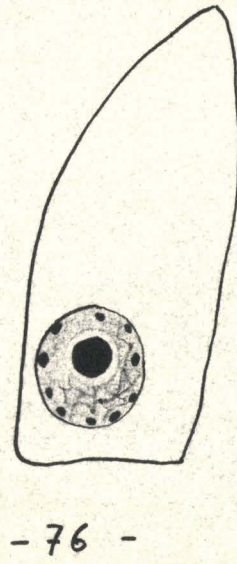
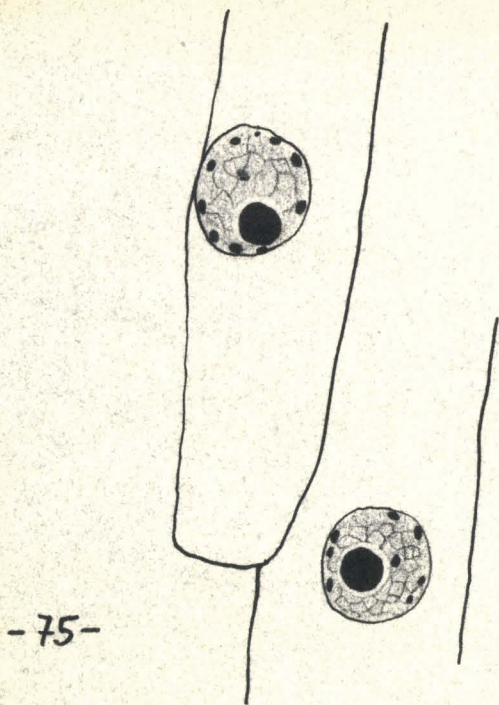


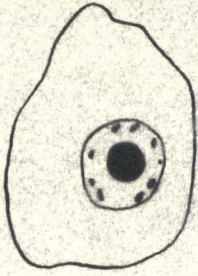
- 73 bis -



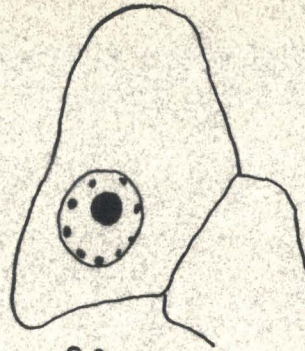
- 74 -

cellule à raphides



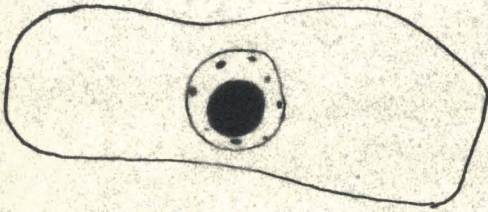


- 81 -

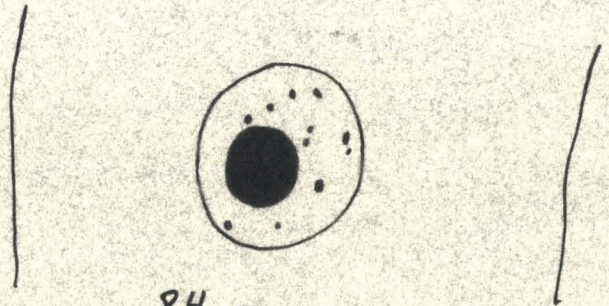


- 82 -

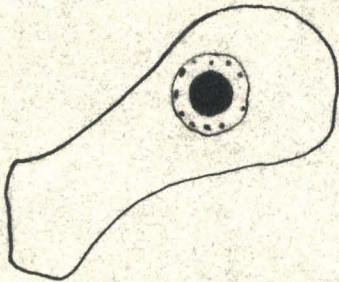
Région méristématique



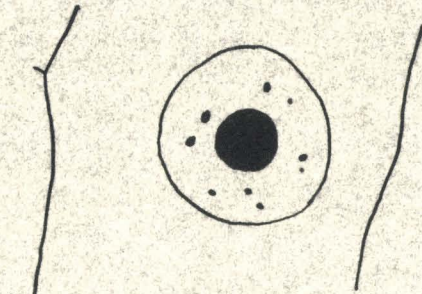
- 83 -



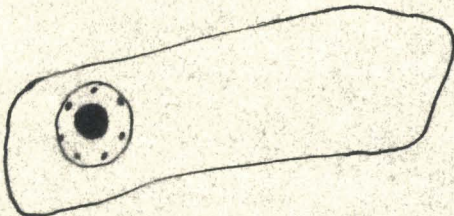
- 84 -



- 85 -

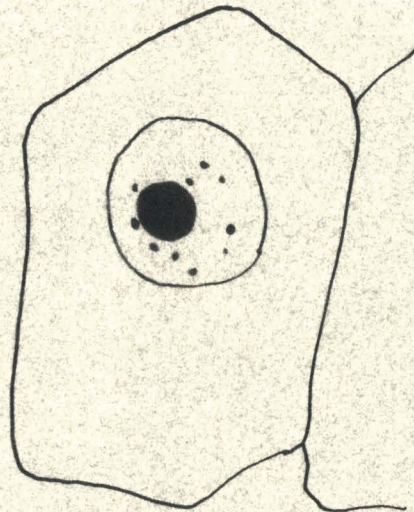


- 86 -



- 87 -

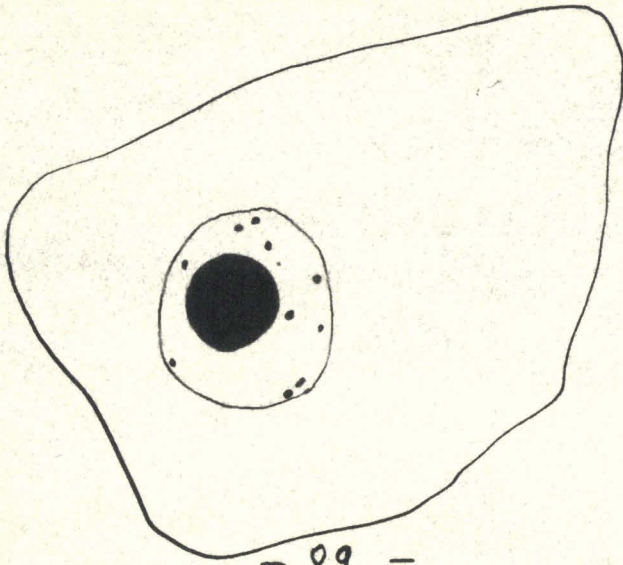
cellules proches du méristème



- 88 -

Cellules parenchymateuses

cellules éloignées
du méristème

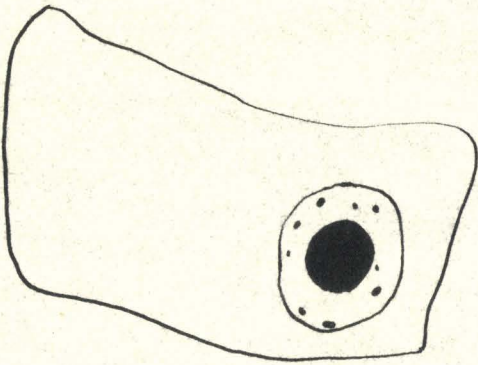


- 89 -

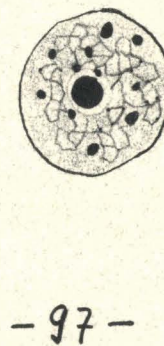
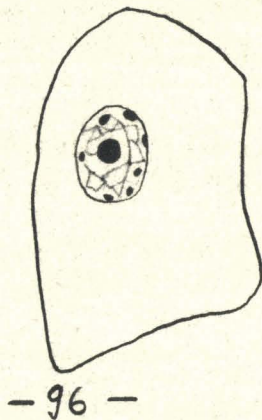
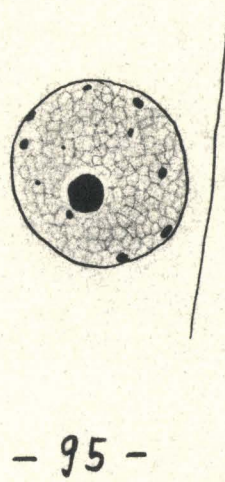
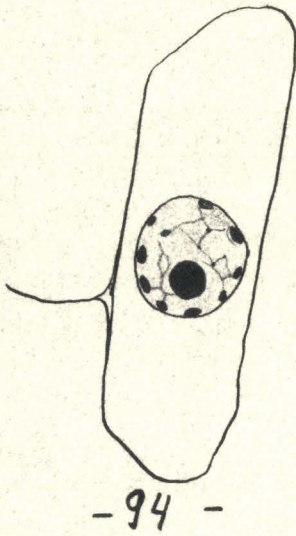
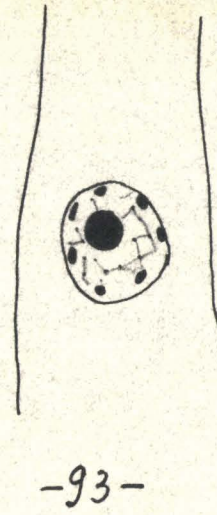
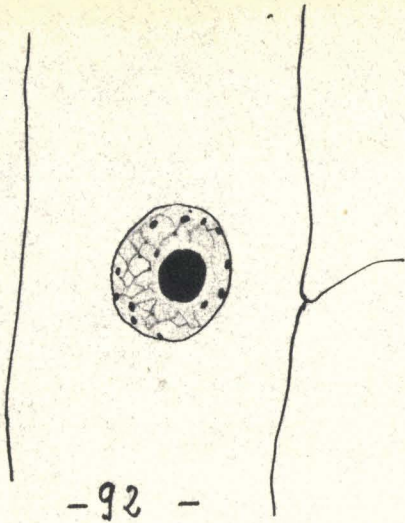


- 90 -

cellules à naphides.



- 91 -



cellules proches de la région vasculaire

cellules du parenchyme interne.