

MOUZE MICHEL

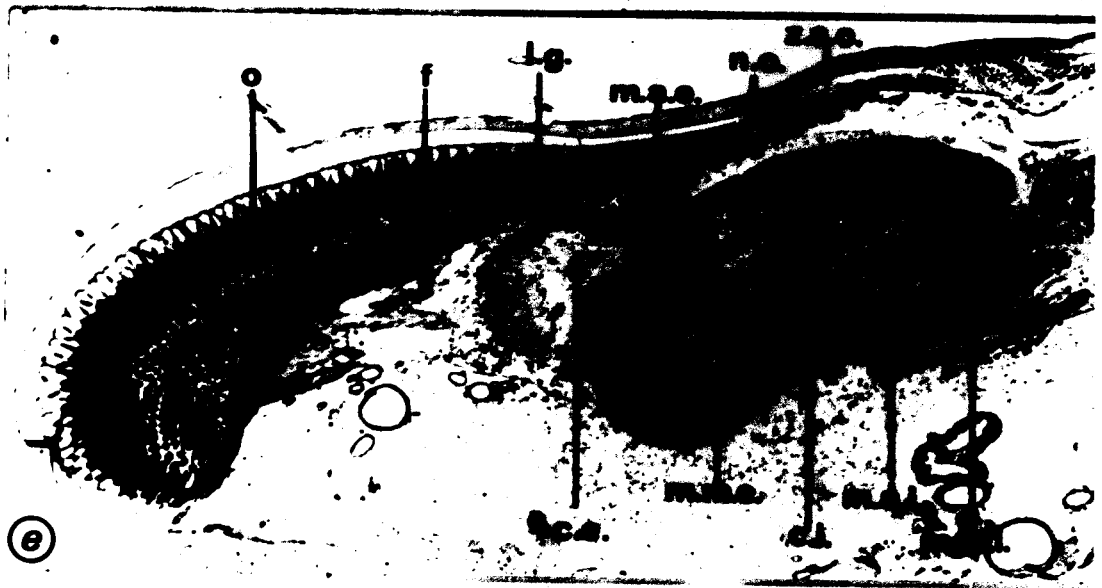
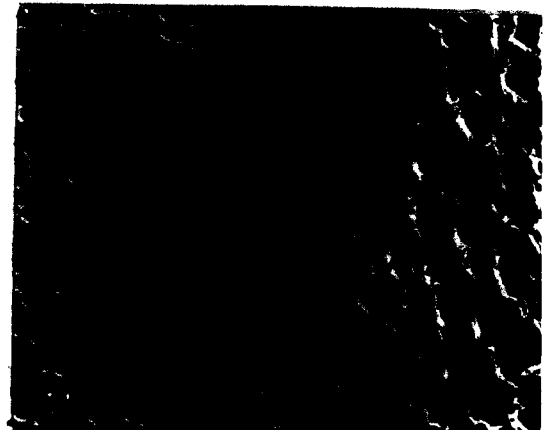
LABORATOIRE DE BIOLOGIE ANIMALE
DE L'UNIVERSITÉ DES SCIENCES ET TECHNIQUES DE LILLE

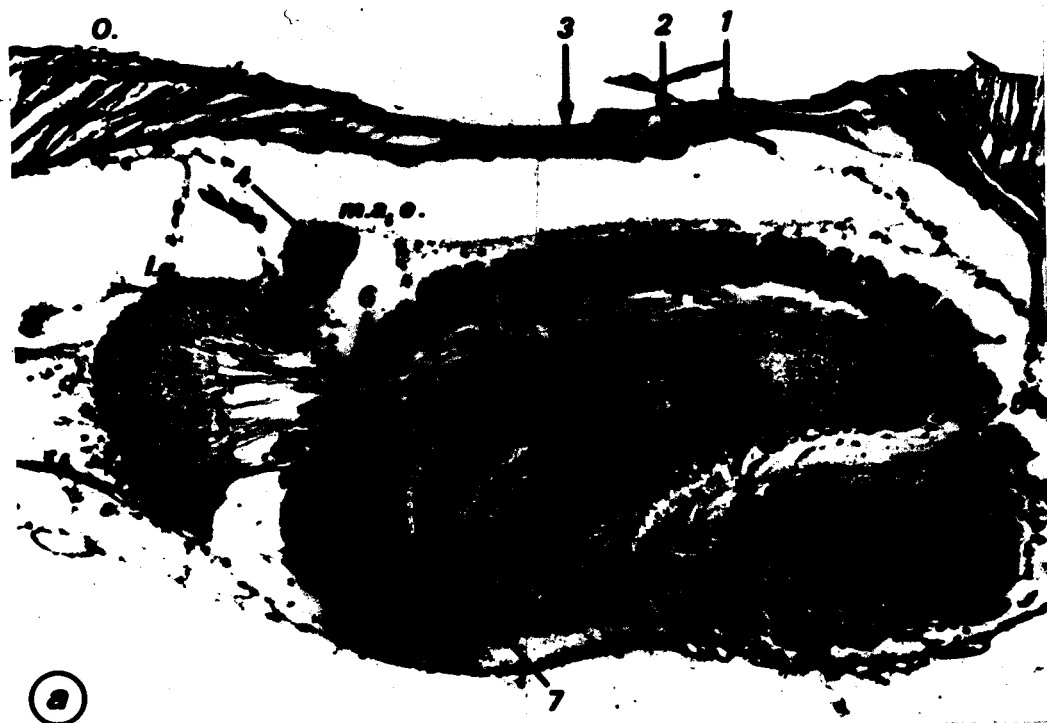
ET

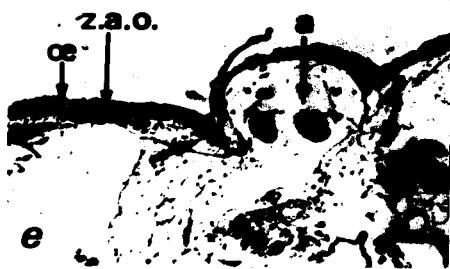
LABORATOIRE ASSOCIÉ AU C.N.R.S. n° 148 :

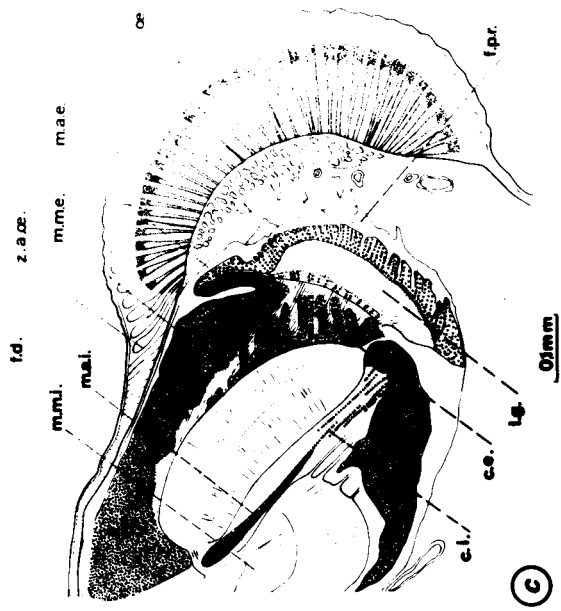
"ENDOCRINOLOGIE COMPARÉE DES INVERTÉBRÉS"

DIRECTEUR : M. LE PROFESSEUR M. DURCHON

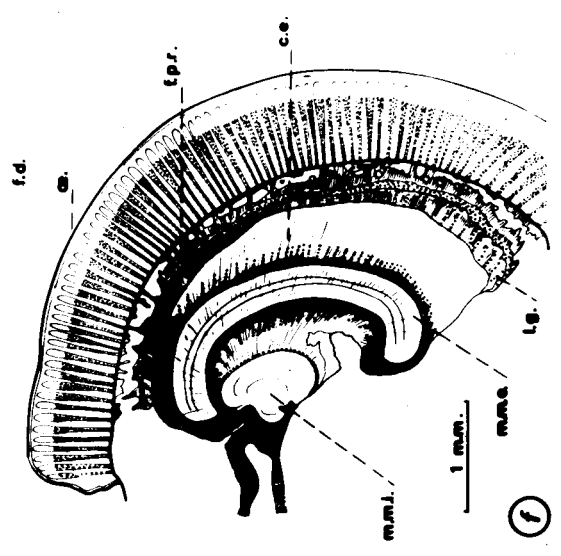




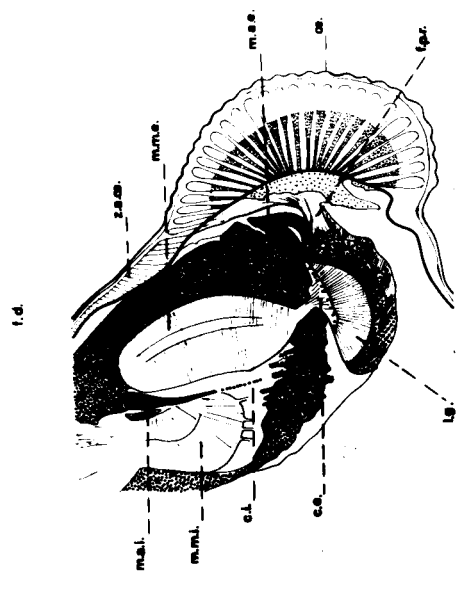




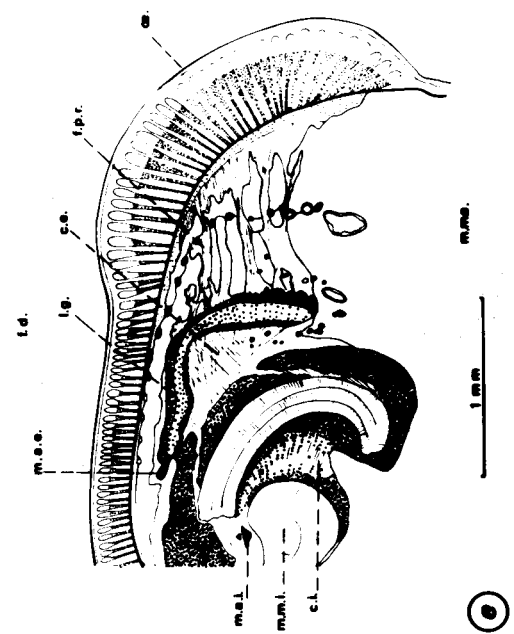
(C)



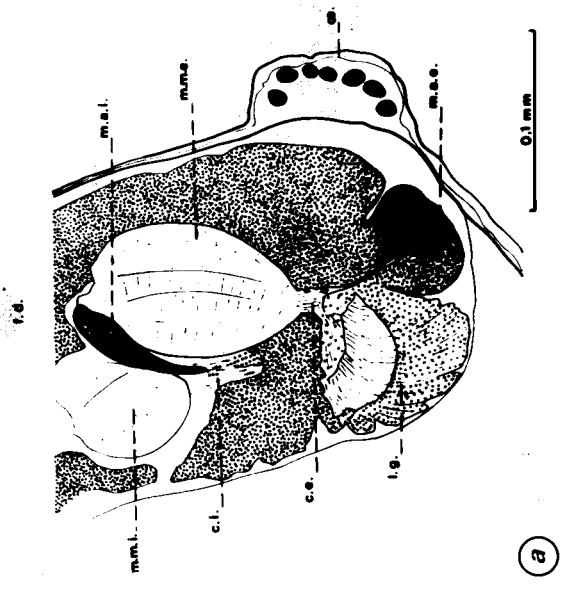
(f)



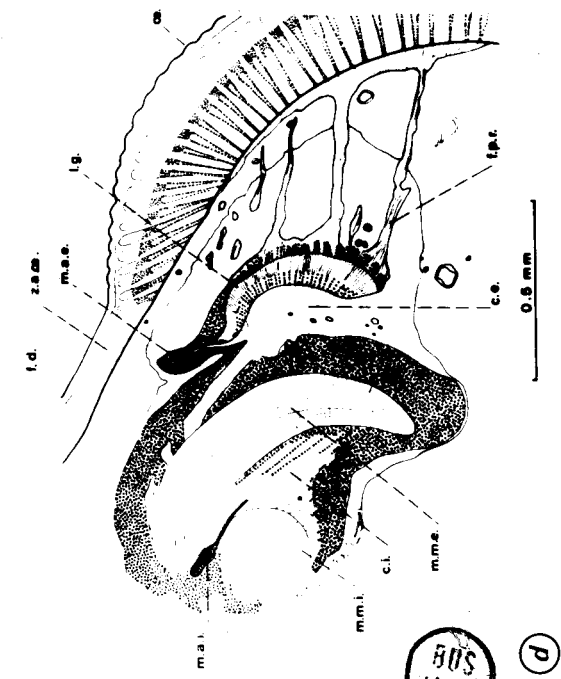
(b)



(e)

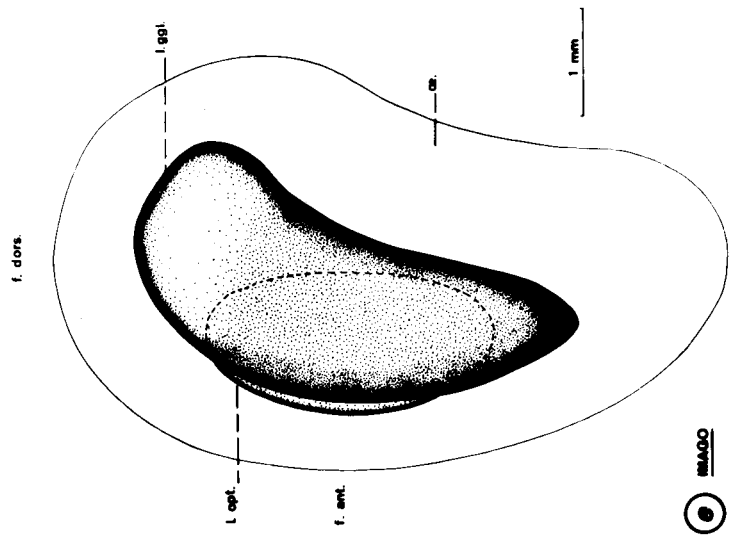
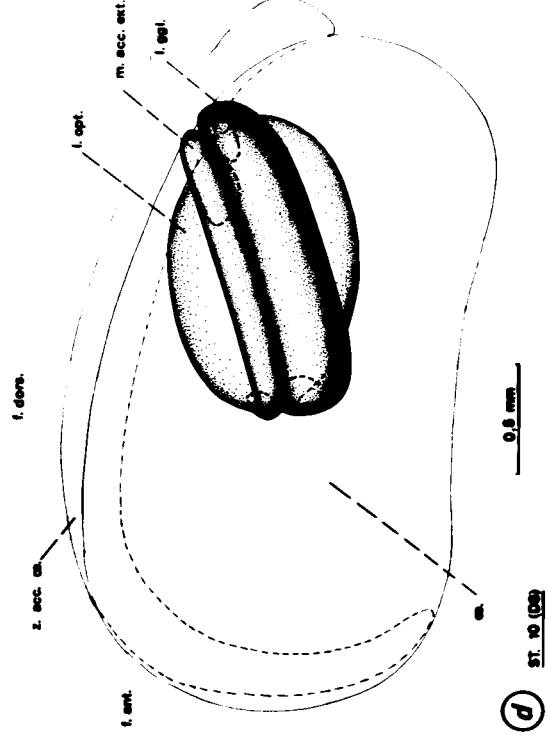
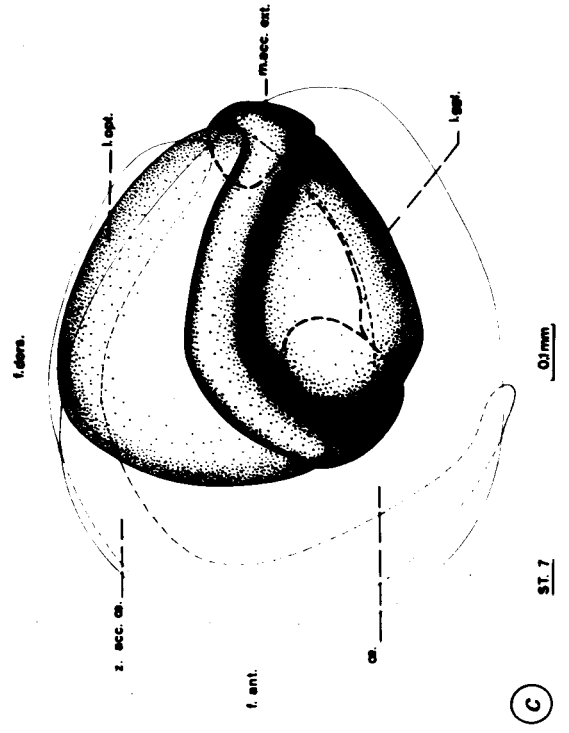
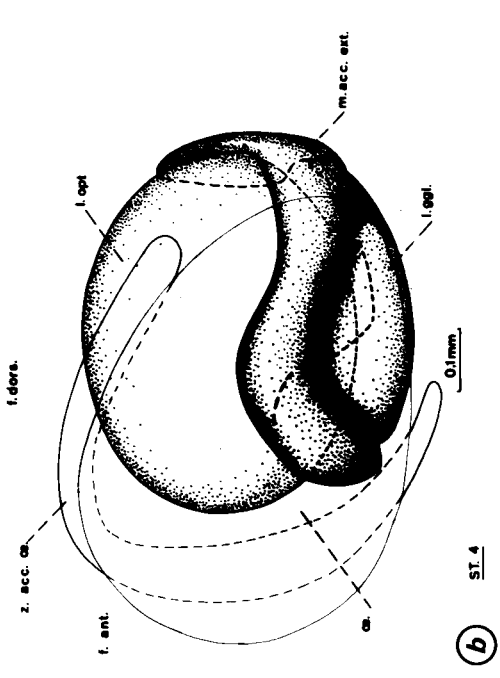
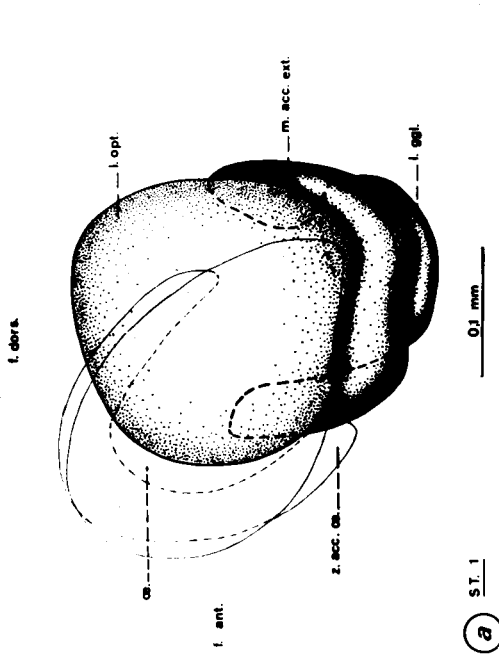


(a)



(d)

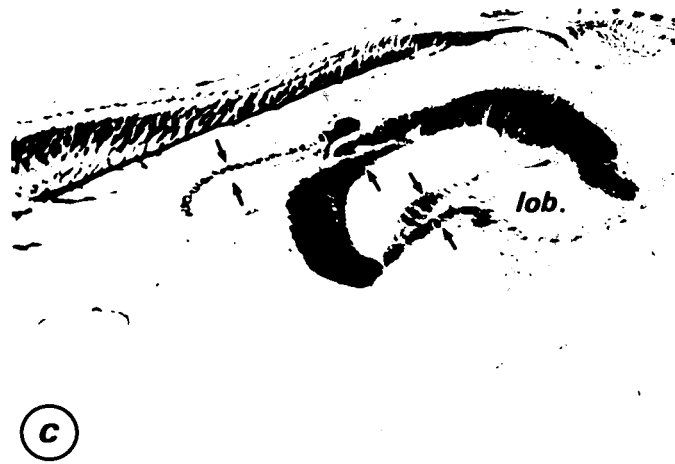
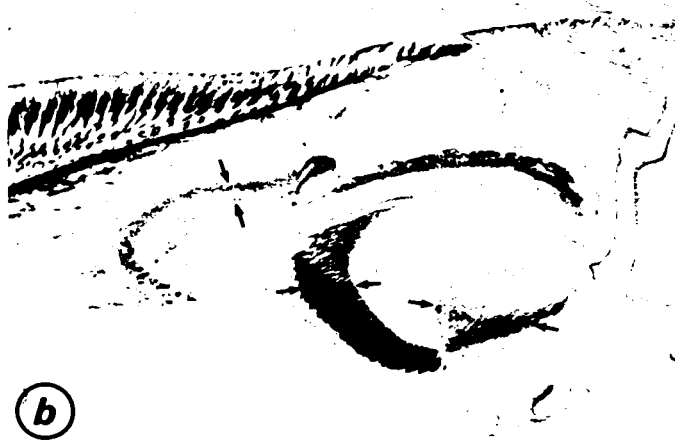
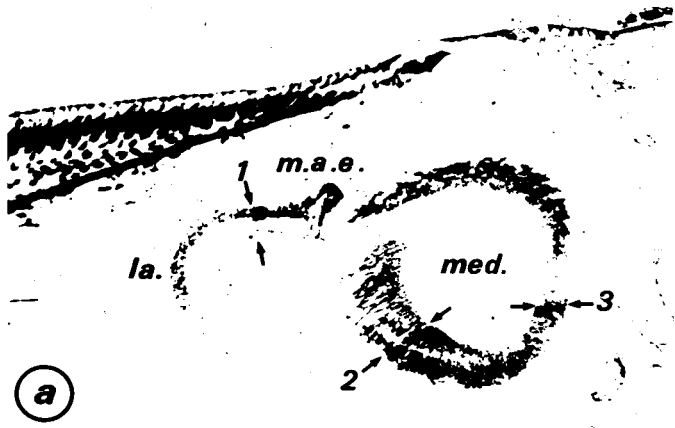
BUS
LILLE



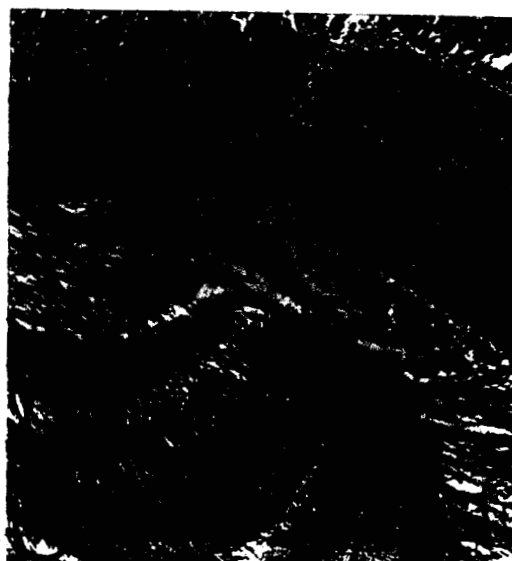
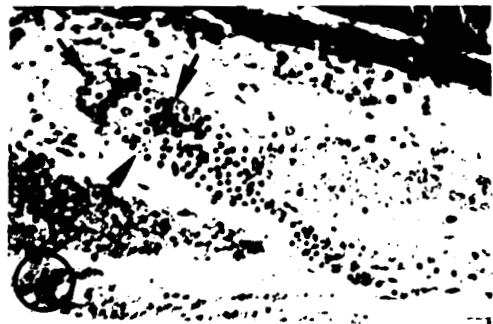
BUS
LILLE



DIT'S
LILLE



BUS
LILLE



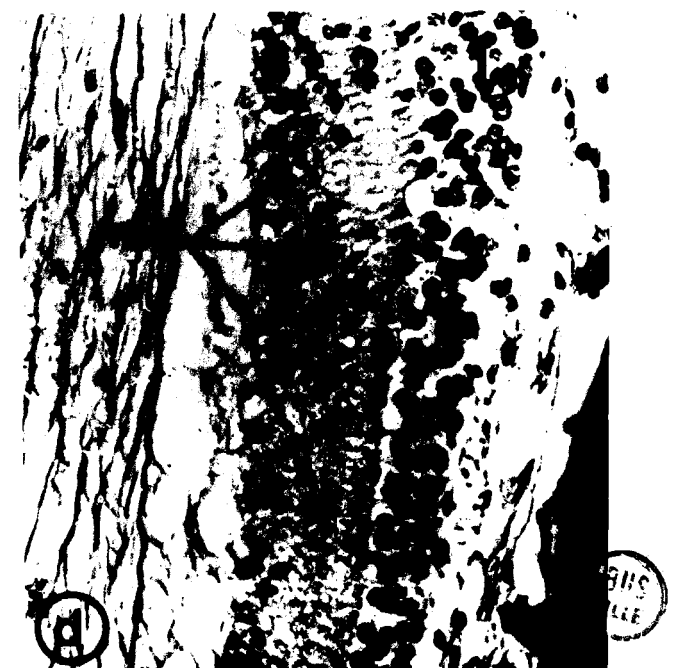
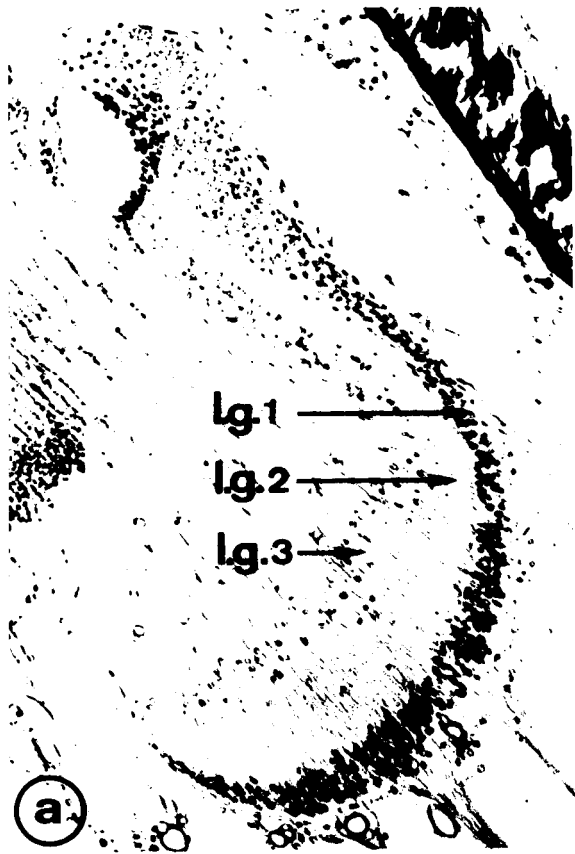
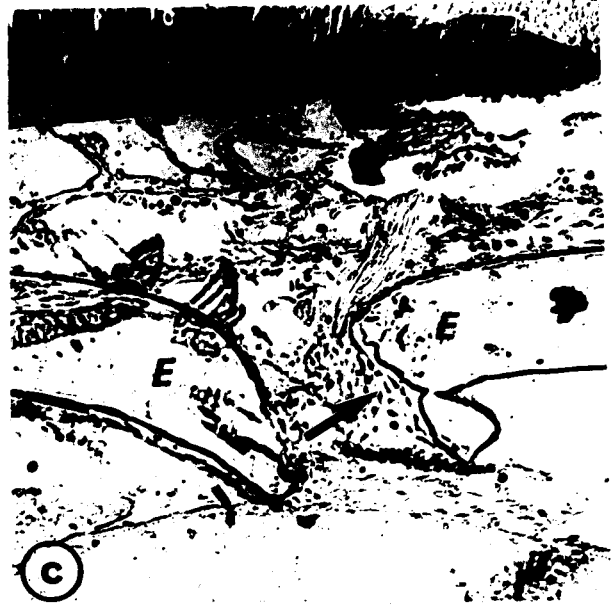
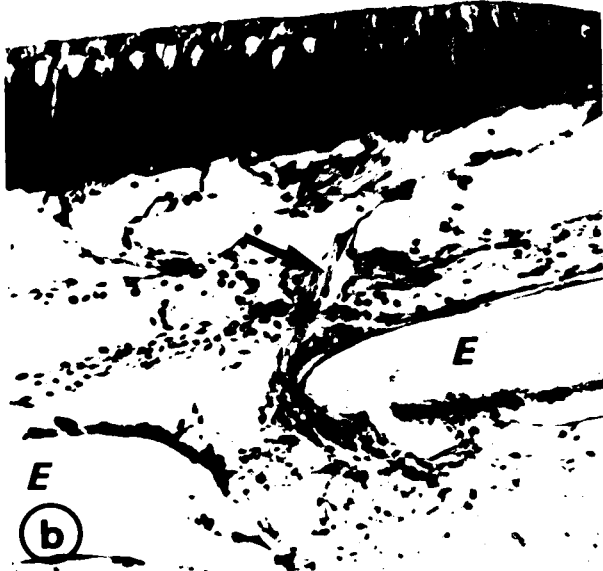
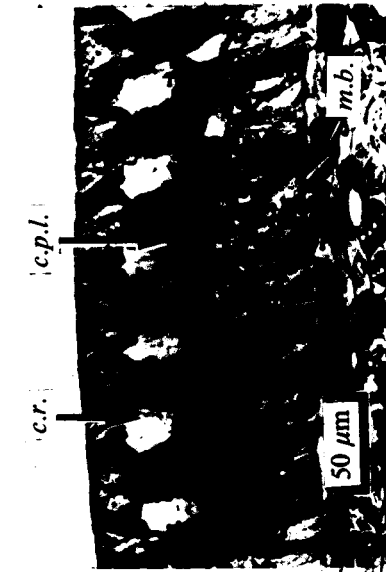
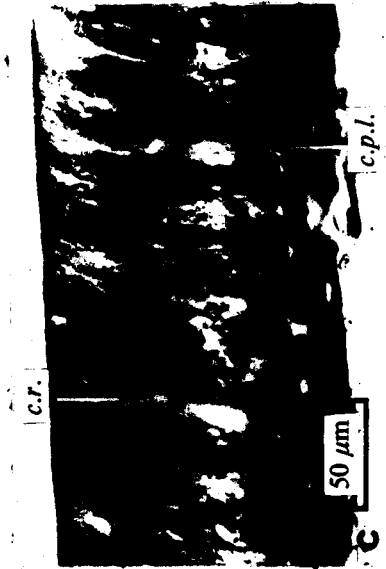
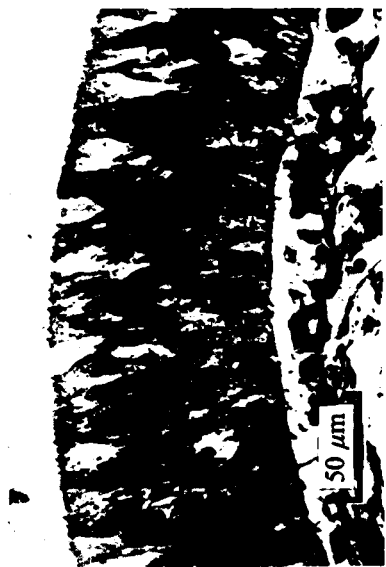


PLANCHE X



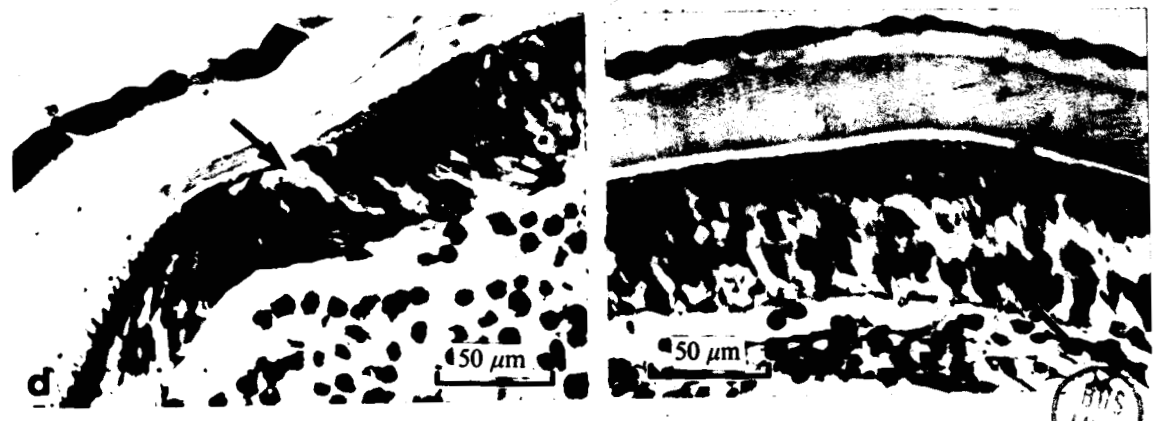
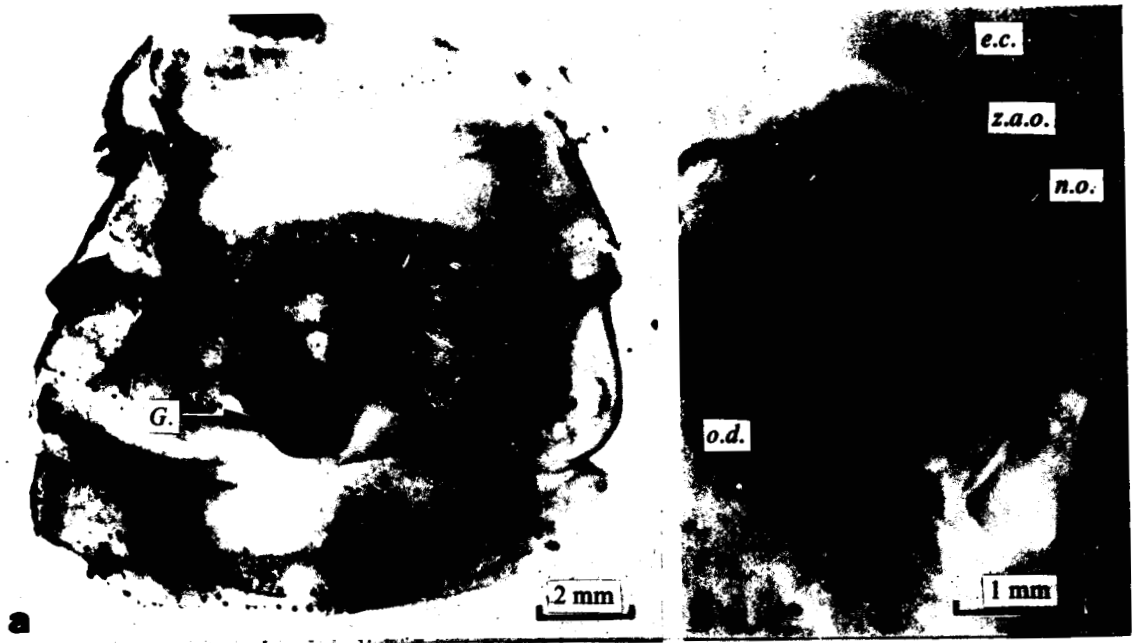
BUS
LILLÉ





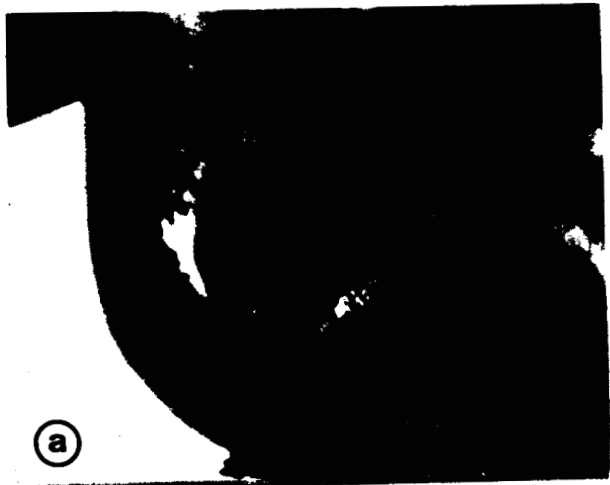
W.S. LILLE

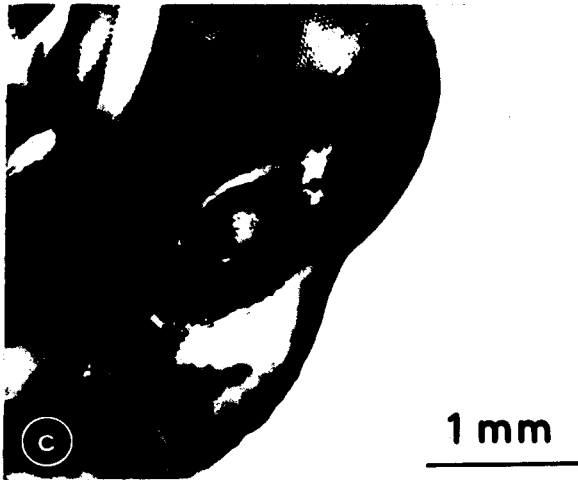
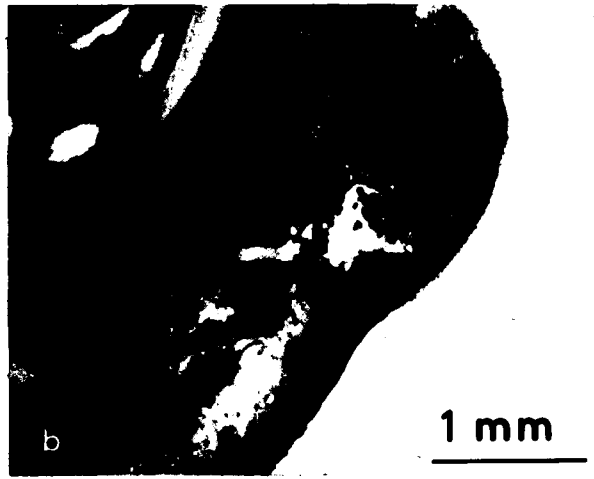


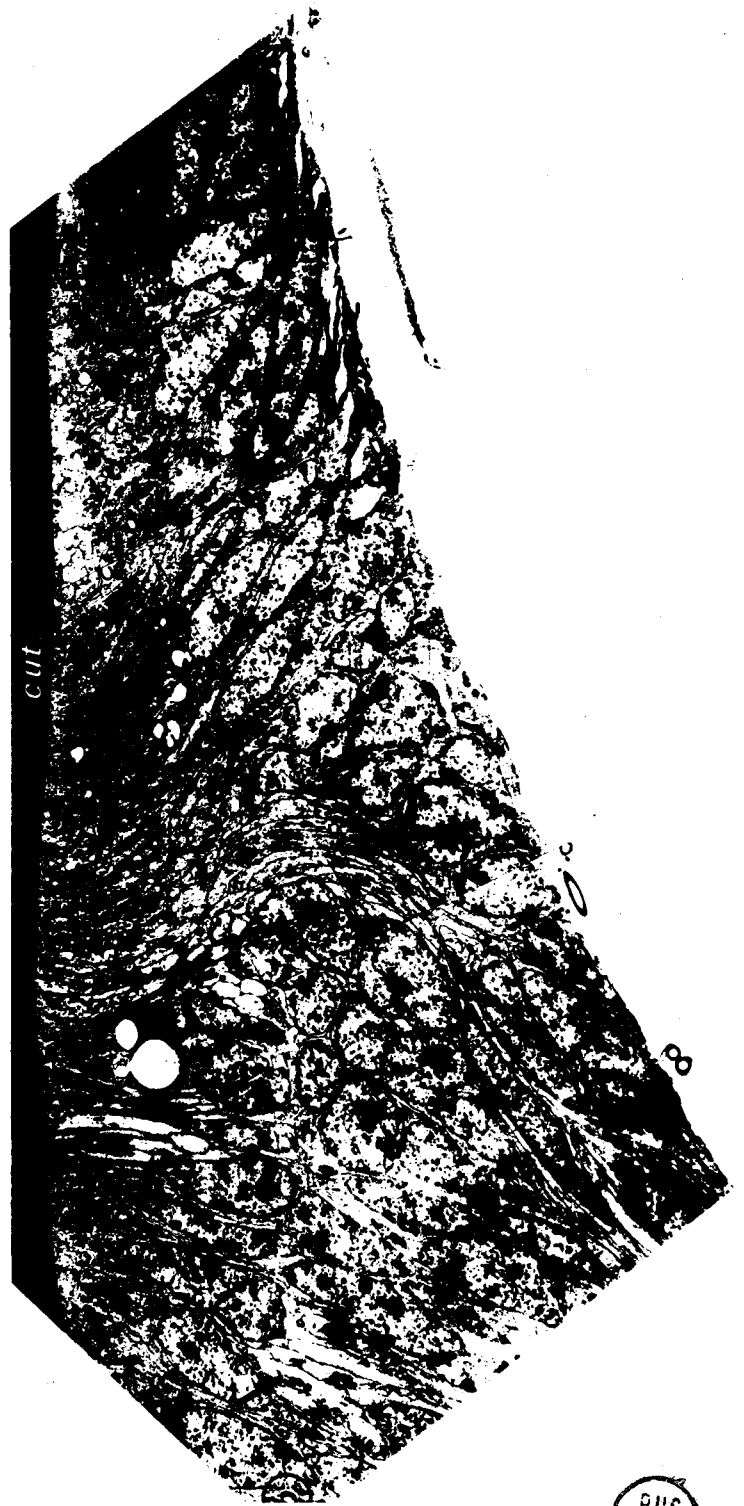
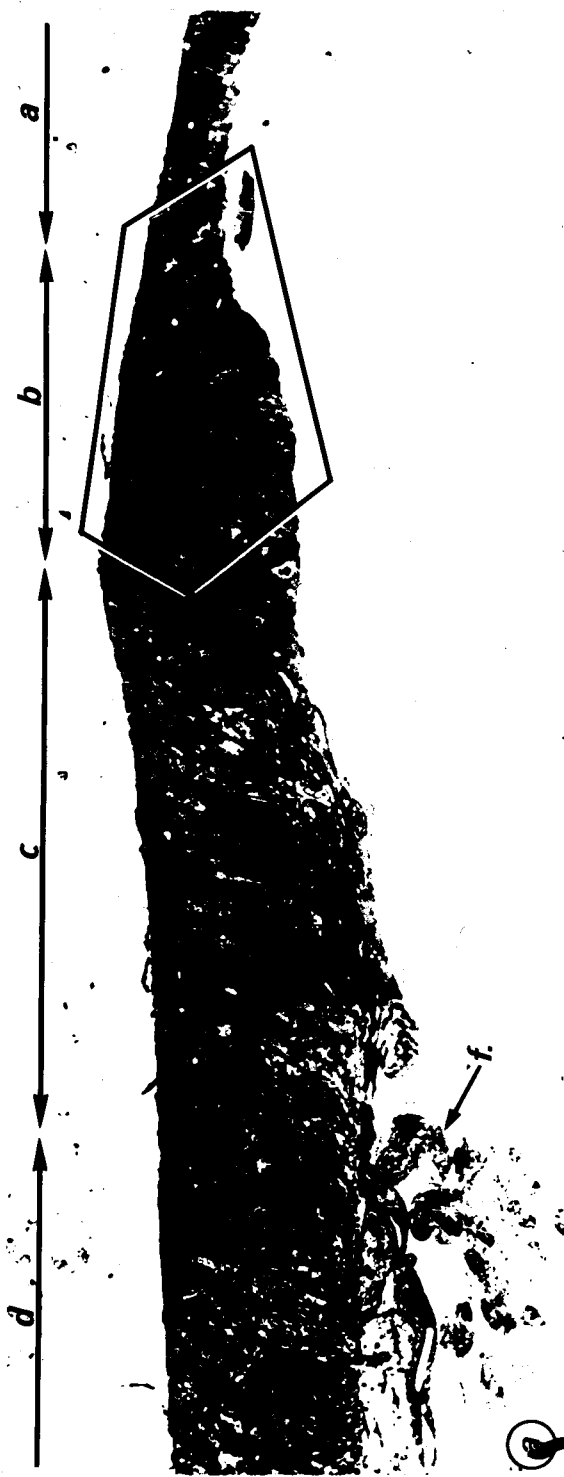


BY S
LILLE

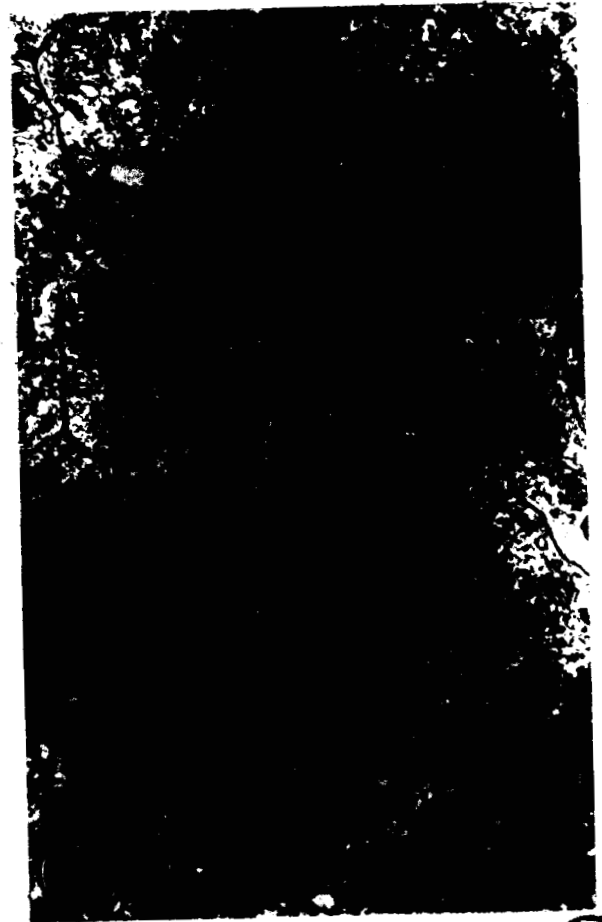
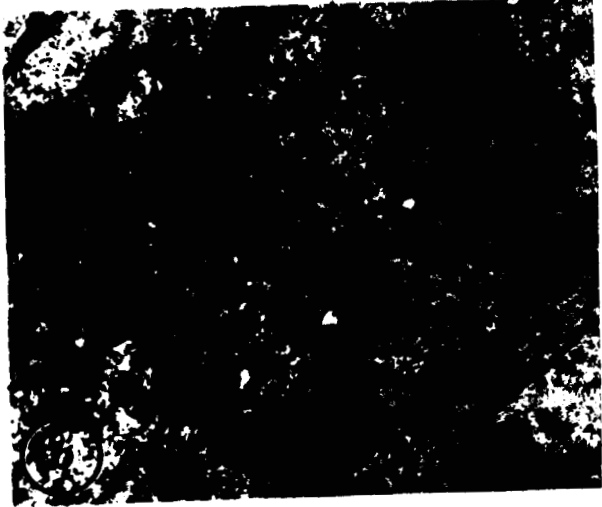
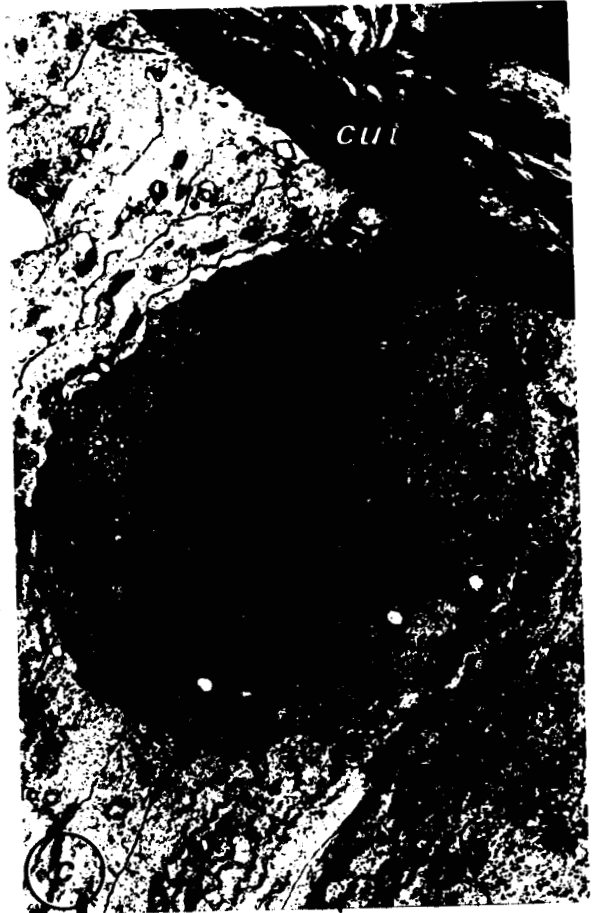


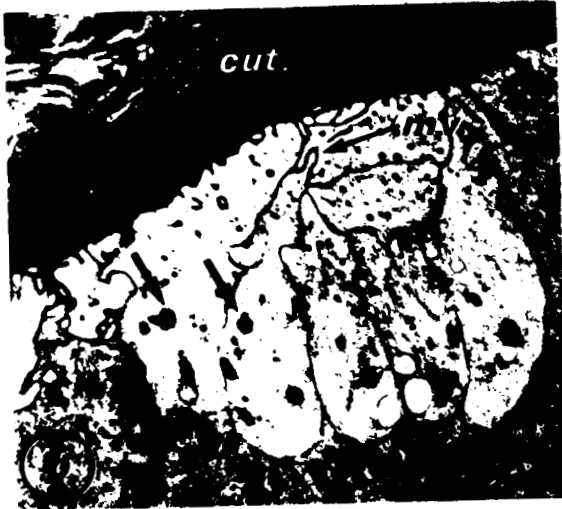


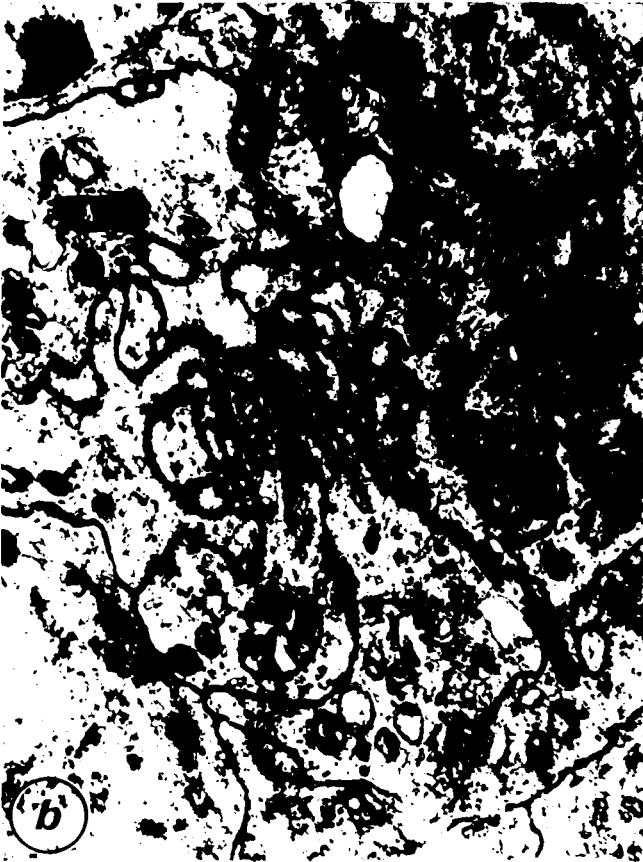
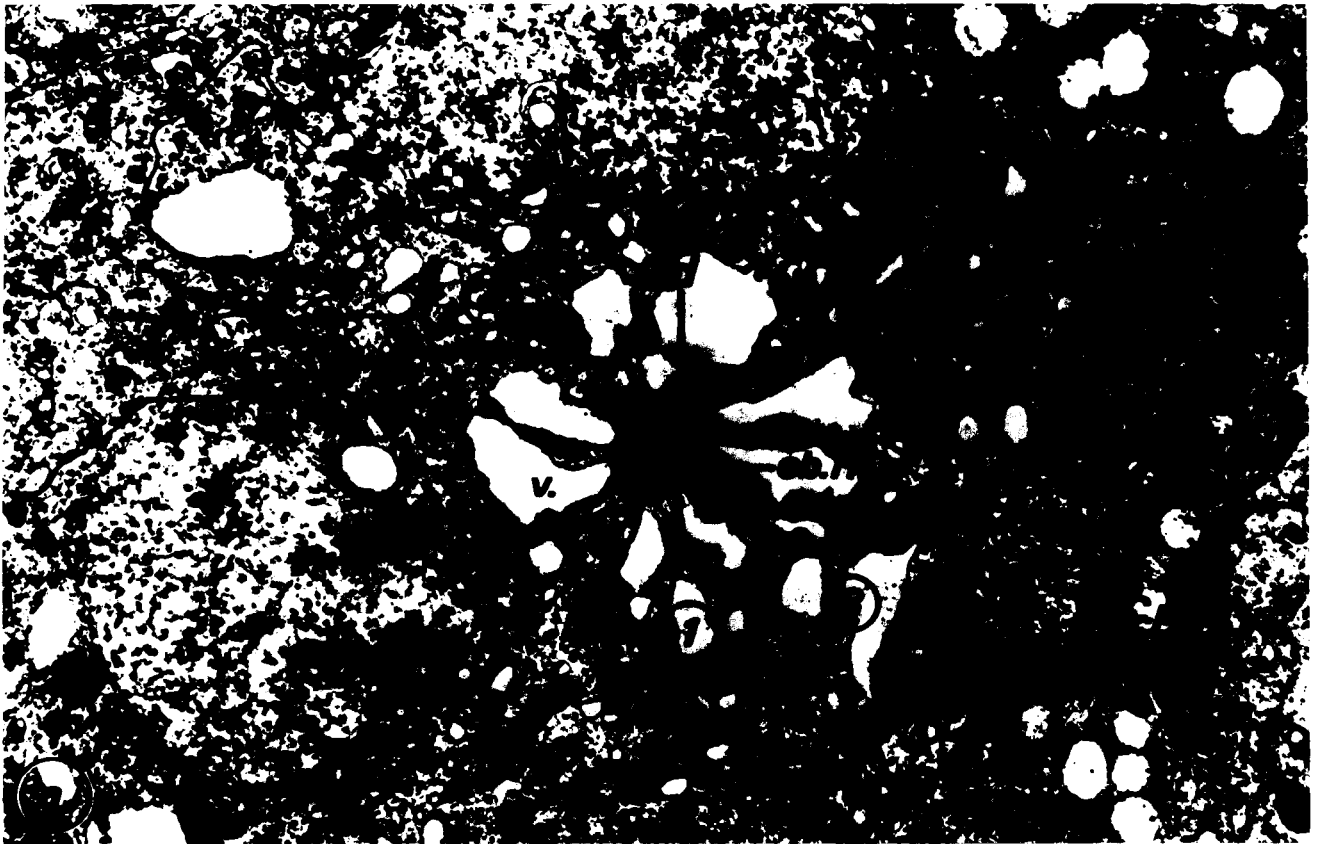




BUS
LILLE

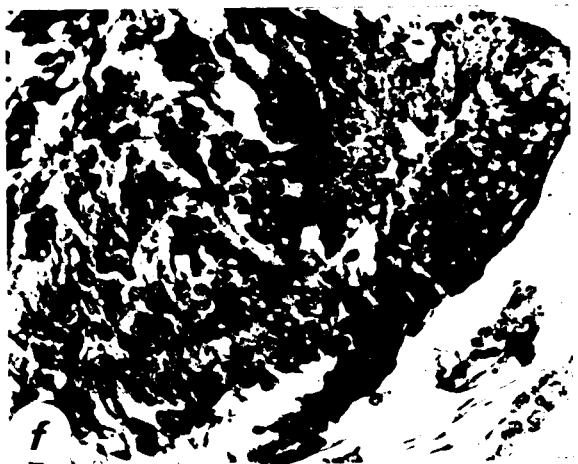






BUS
LILLE







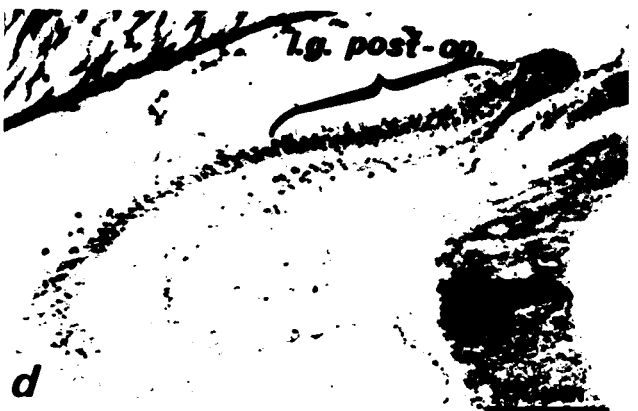
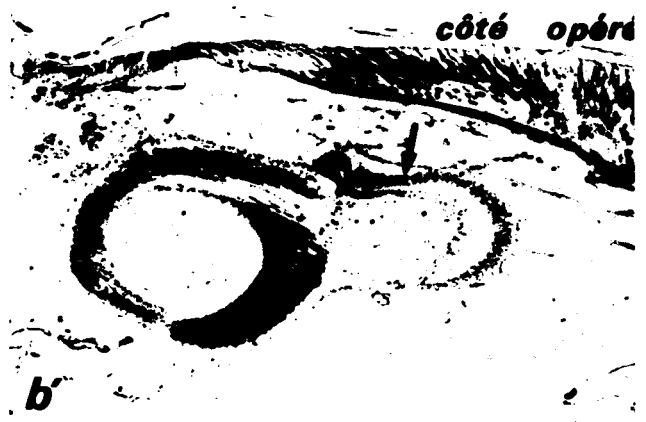
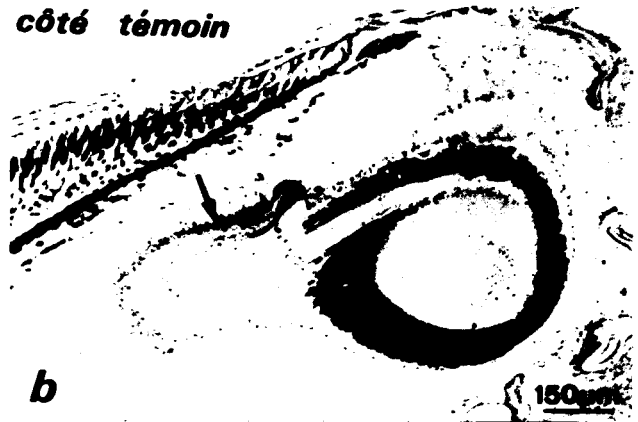
DR'S
LILLE

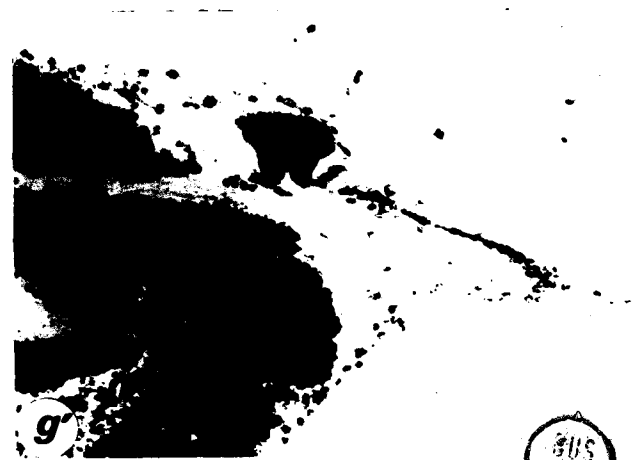
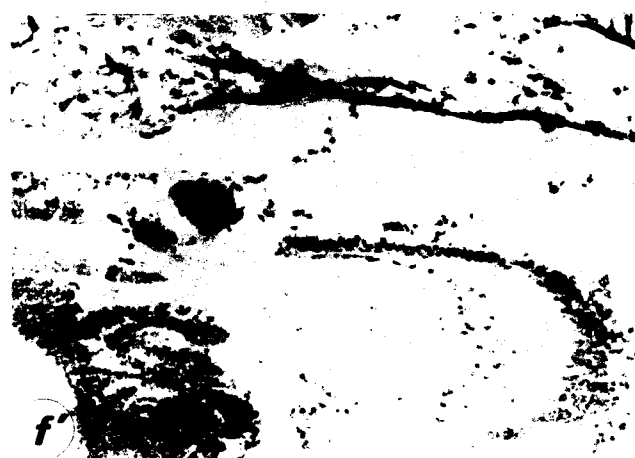
PLANCHE XXV ET
XXVI



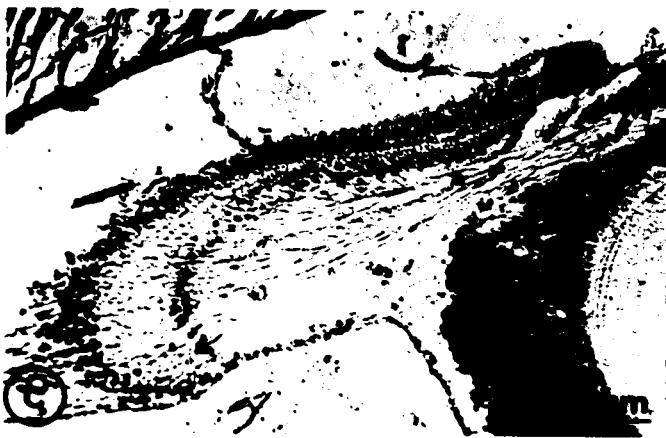
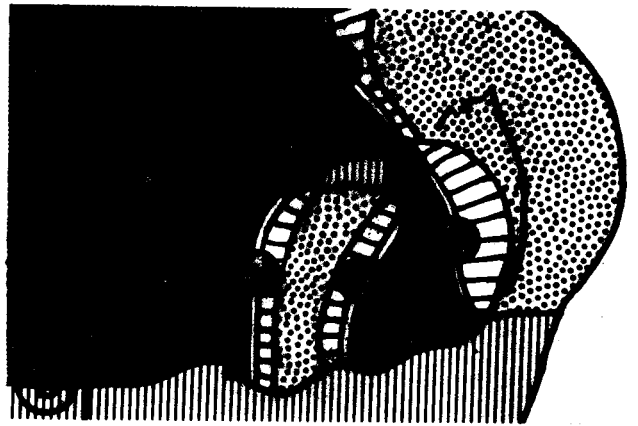
côté témoin

côté opéré

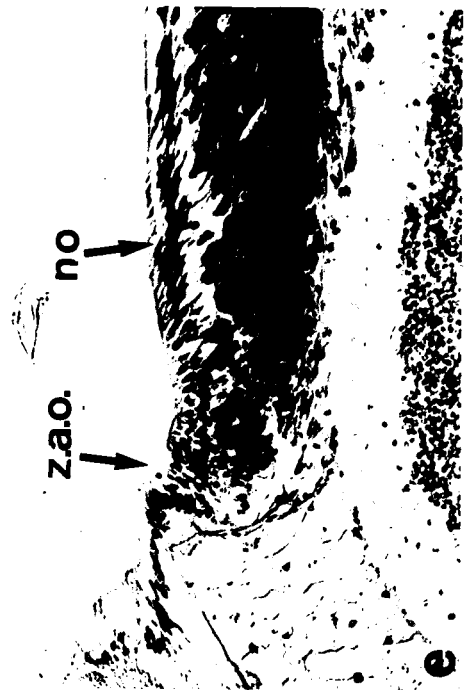
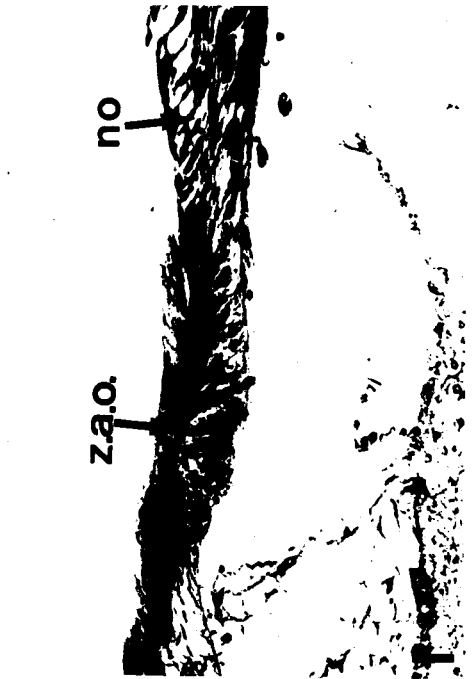
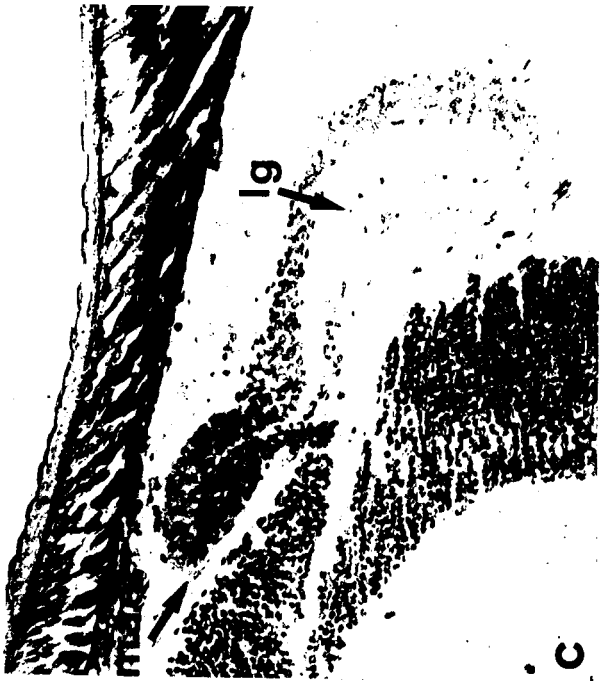




BUS
LILLE



BUS
LILLE







LILLE



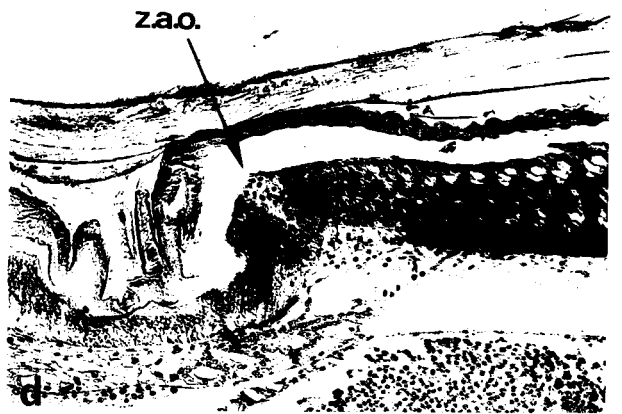
a



b



c



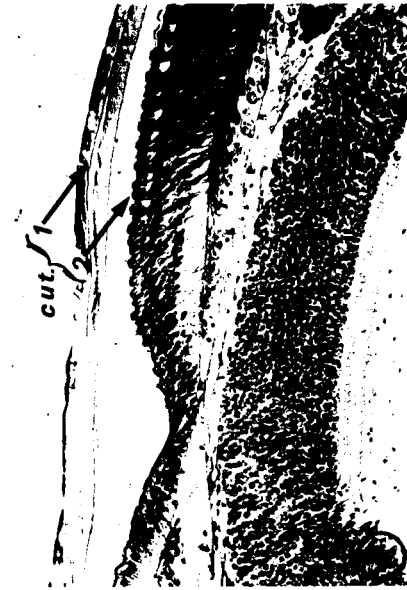
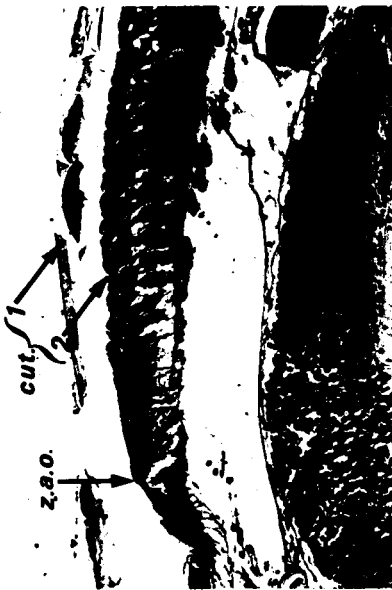
d



e



BBS
LILLE



LIBRAIRIE SCIENTIFIQUE
LILLE
Sección de CIENCIAS
ESTABLE