

50376
1981
25-2

50376
1981
25-2

RECUEIL DES SPECTRES R.M.N



I	- t.Boc Tyr Pro Gly Gly OCH ₃	- spectre proton	- solvant DMSO
II	- t.Boc Tyr Pro Gly Gly OCH ₃	- spectre ¹³ C	- solvant DMSO
III	- t.Boc Gly Pro Tyr Gly OCH ₃	- spectre proton	- solvant DMSO
IV	- t.Boc Gly Pro Tyr Gly OCH ₃	- spectre ¹³ C	- solvant DMSO
V	- t.Boc Gly Pro Gly Tyr OCH ₃	- spectre proton	- solvant DMSO
VI	- t.Boc Gly Pro Gly Tyr OCH ₃	- spectre ¹³ C	- solvant DMSO
VII	- t.Boc Gly Pro Tyr Gly OCH ₃	- spectre proton	- solvant CDCl ₃
VIII	- t.Boc Gly Pro Gly Tyr OCH ₃	- spectre proton	- solvant CDCl ₃
IX	- t.Boc Tyr Pro Gly Gly OCH ₃	- spectre proton	- solvant CDCl ₃
X	- Gly Pro Tyr Gly	- spectre proton	- solvant DMSO
XI	- Gly Pro Tyr Gly	- spectre proton	- solvant TFE
XII	- Gly Pro Gly Tyr	- spectre proton	- solvant DMSO
XIII	- Gly Pro Gly Tyr	- spectre proton	- solvant TFE
XIV	- Tyr Pro Gly Gly	- spectre proton	- solvant DMSO
XV	- Gly Pro Ala Gly	- spectre proton	- solvant DMSO
XVI	- Tyr Pro Gly Gly	- spectre proton	- solvant D ₂ O
XVII	- Tyr Pro Gly Gly (région H _α)	- spectre proton	- solvant D ₂ O
XVIII	- Tyr Pro Gly Gly (région H _α)	- spectre proton	- solvant H ₂ O
XIX	- Phe Pro Gly Gly	- spectre proton	- solvant D ₂ O
XX	- Phe Pro Gly Gly (région H _α)	- spectre proton	- solvant D ₂ O
XXI	- Gly Pro Tyr Gly	- spectre proton	- solvant D ₂ O
XXII	- Gly Pro Gly Tyr	- spectre proton	- solvant D ₂ O

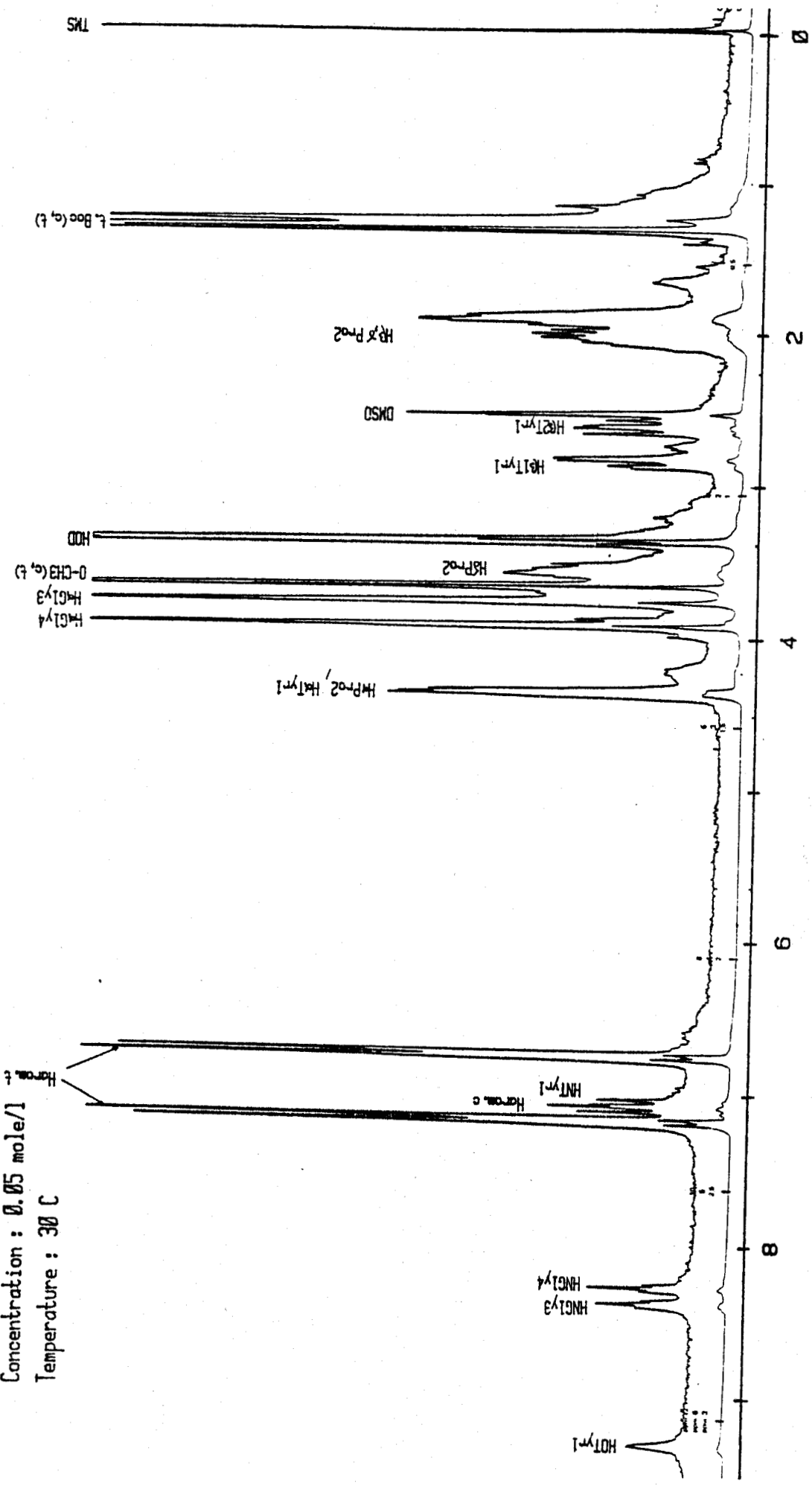
Spectre 1

t-Boc Tyr Pro Gly O CH3

Solvant : DMSO d6

Concentration : 0.05 mole/l

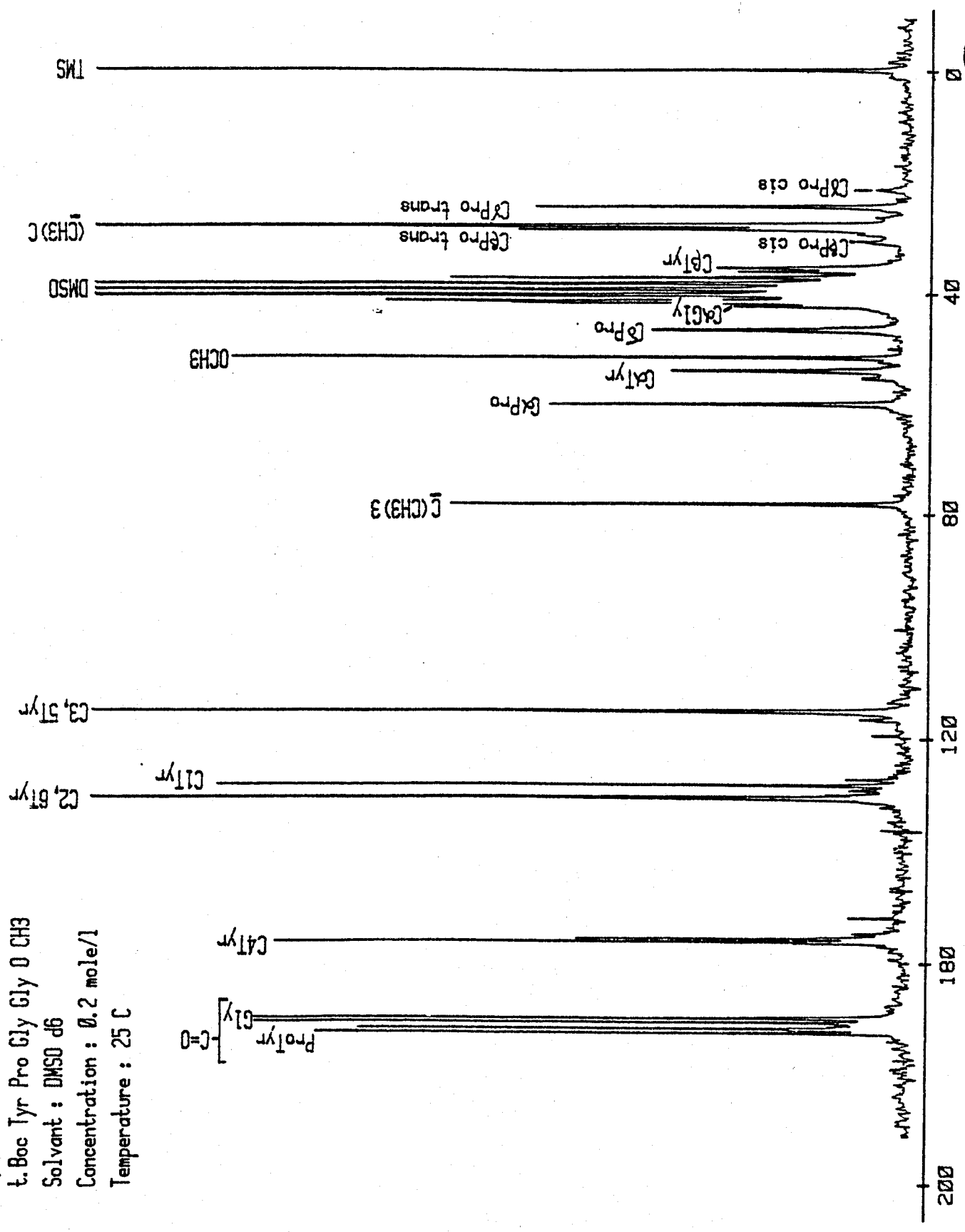
Temperature : 30 C



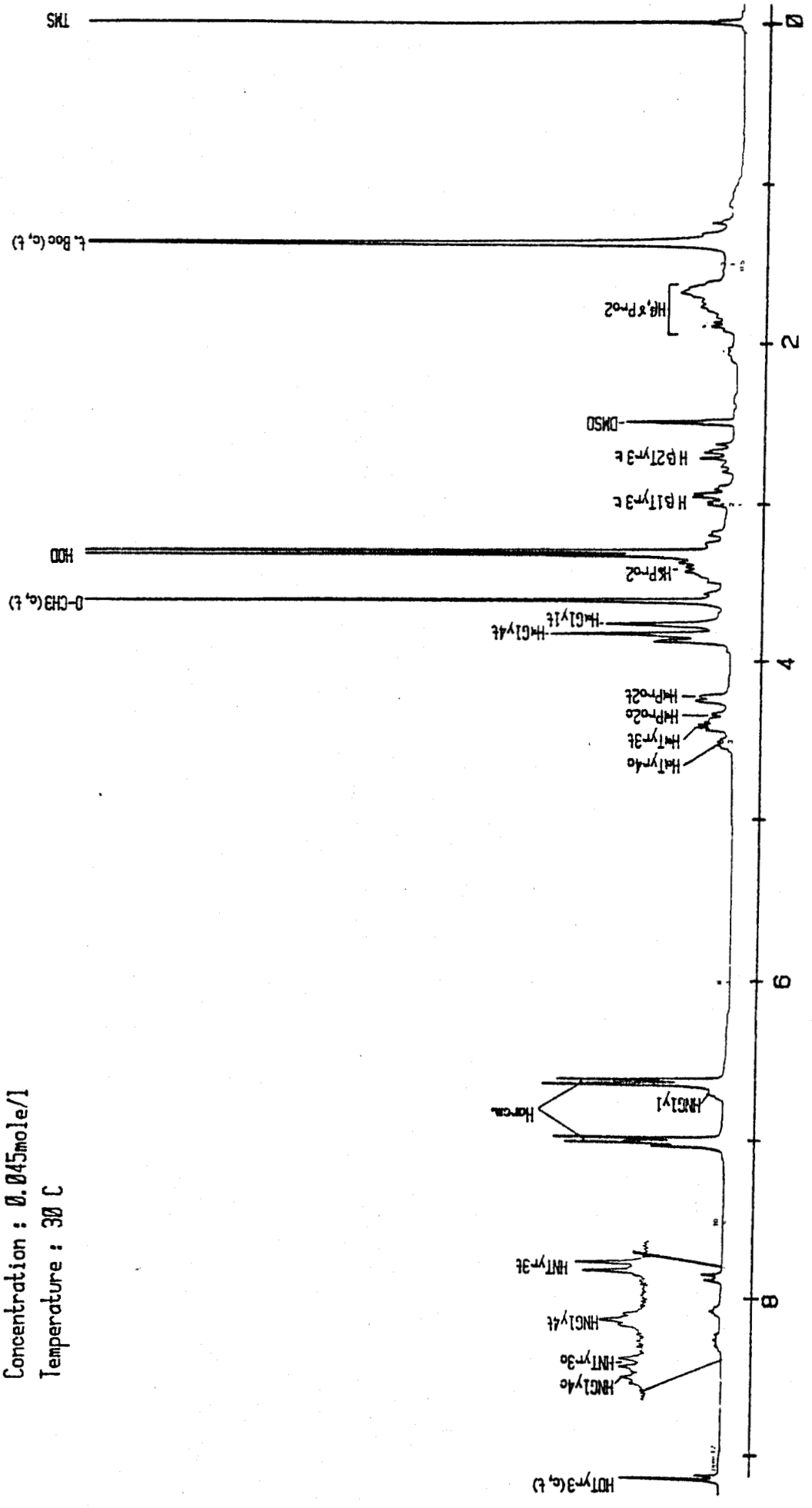
BUS
LITE

Spectre II

t-Boc Tyr Pro Gly O CH₃
Solvant : DMSO d₆
Concentration : 0.2 mole/l
Temperature : 25 C



Spectre III
 t.Boc Gly Pro Tyr Gly O CH3
 Solvant : DMSO d6
 Concentration : 0.045mole/l
 Temperature : 30 C



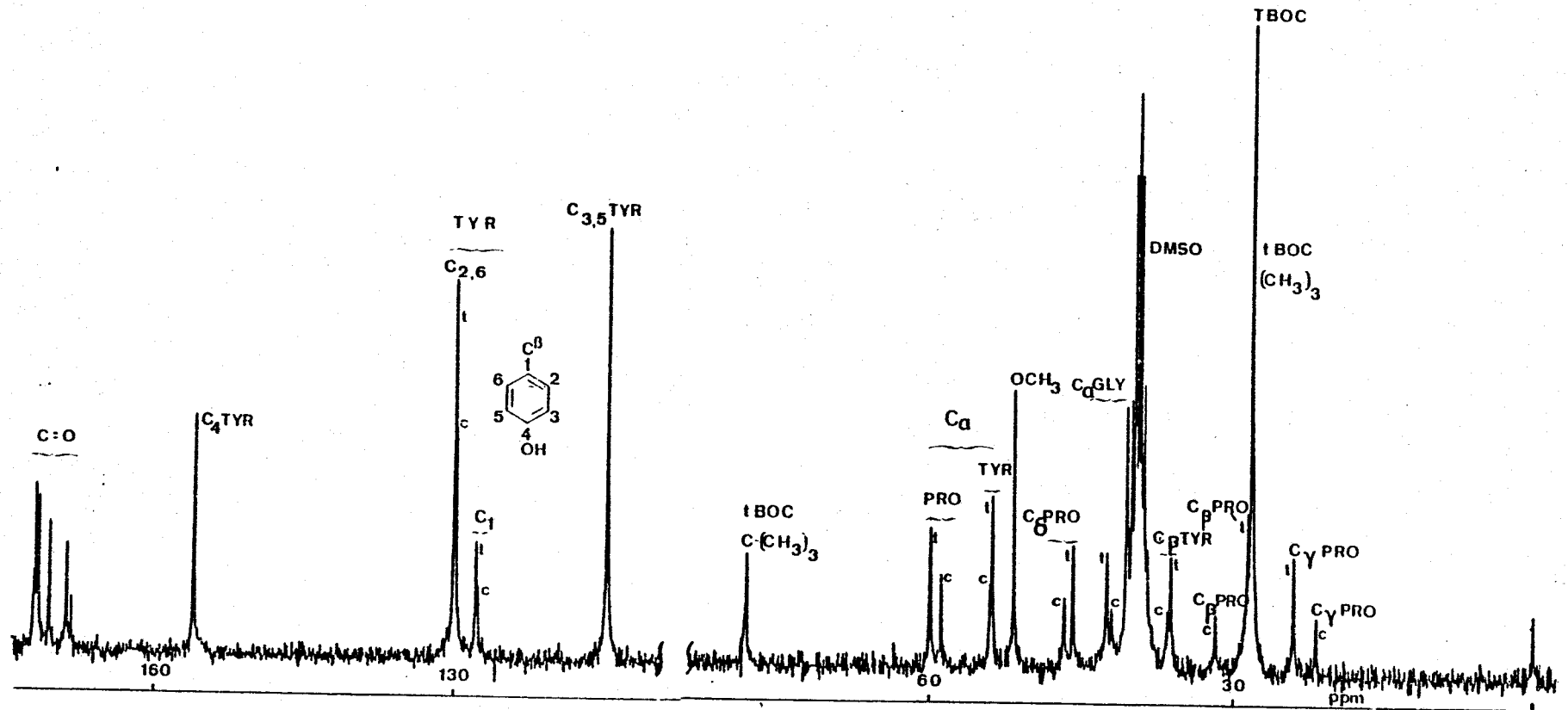
Spectre IV

t. Boc Gly Pro Tyr Gly O CH3

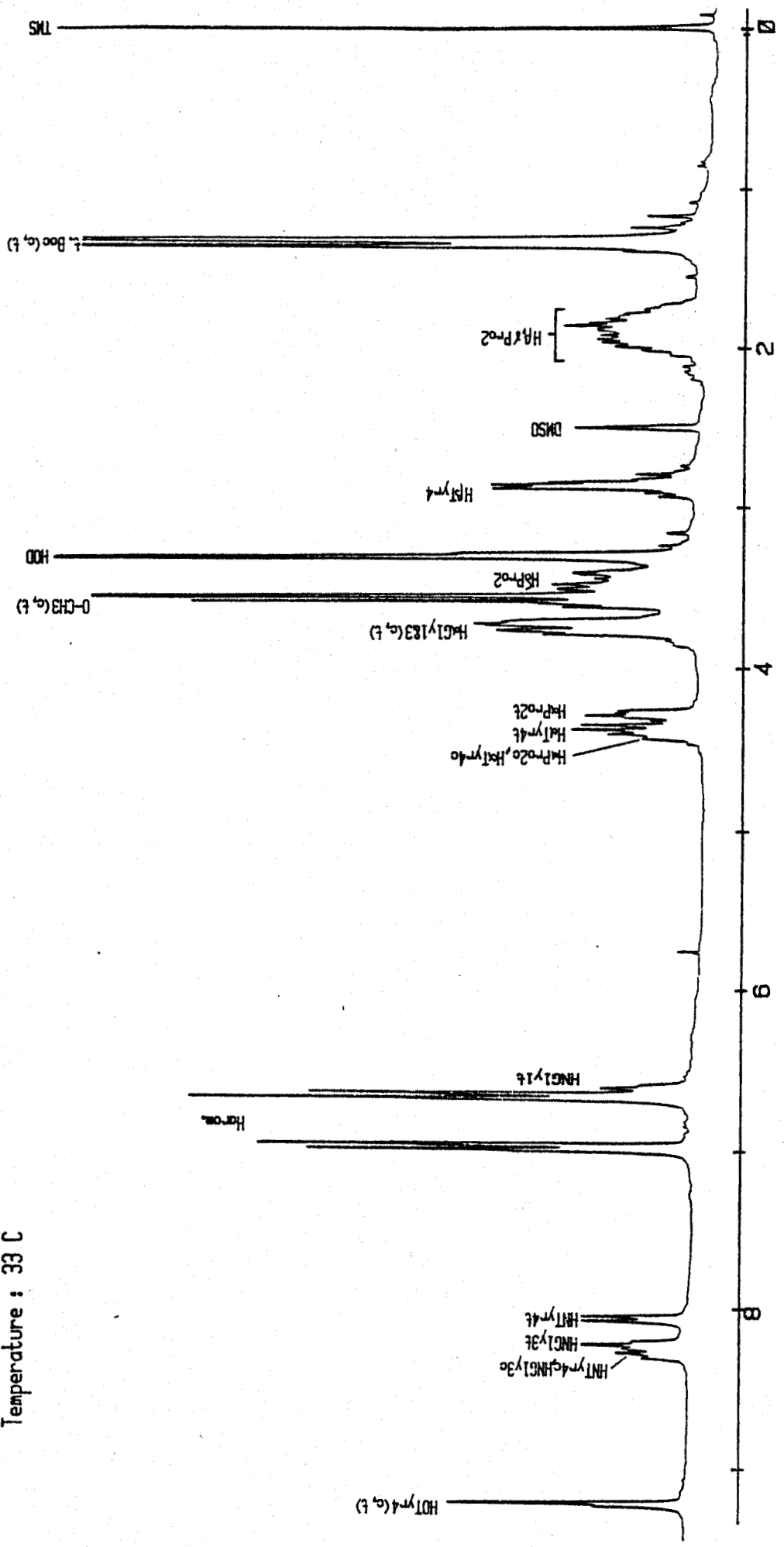
Solvant : DMSO d6

Concentration : 0.2mole/l

Temperature : 25 C



Spectre V
t. Boc Gly Pro Gly Tyr O CH3
Solvant : DMSO d6
Concentration : 0.045mole/l
Temperature : 33 C



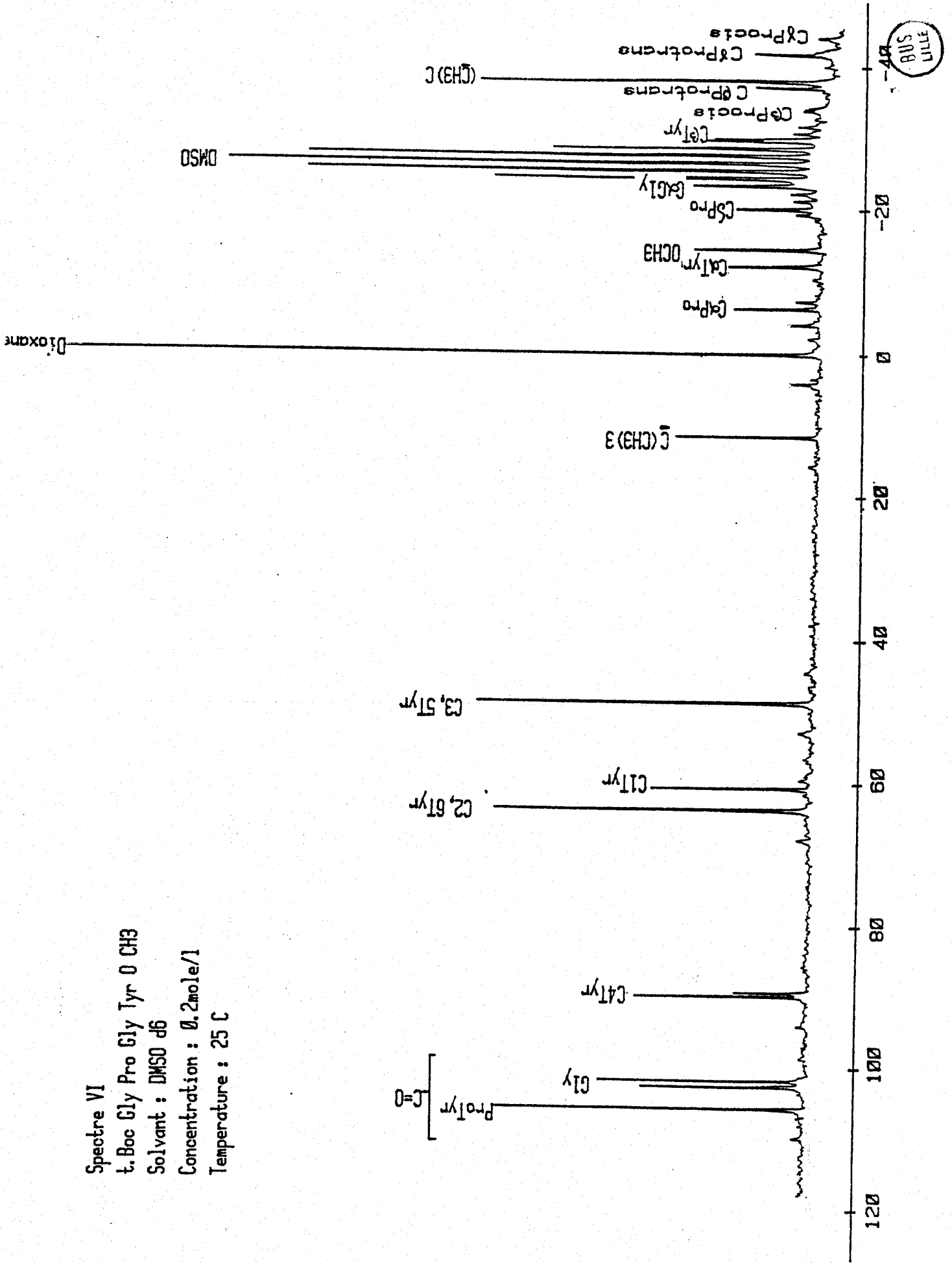
Spectre VI

t.Boc Gly Pro Gly Tyr O CH3

Solvent : DMSO d6

Concentration : 0.2mole/l

Temperature : 25 C



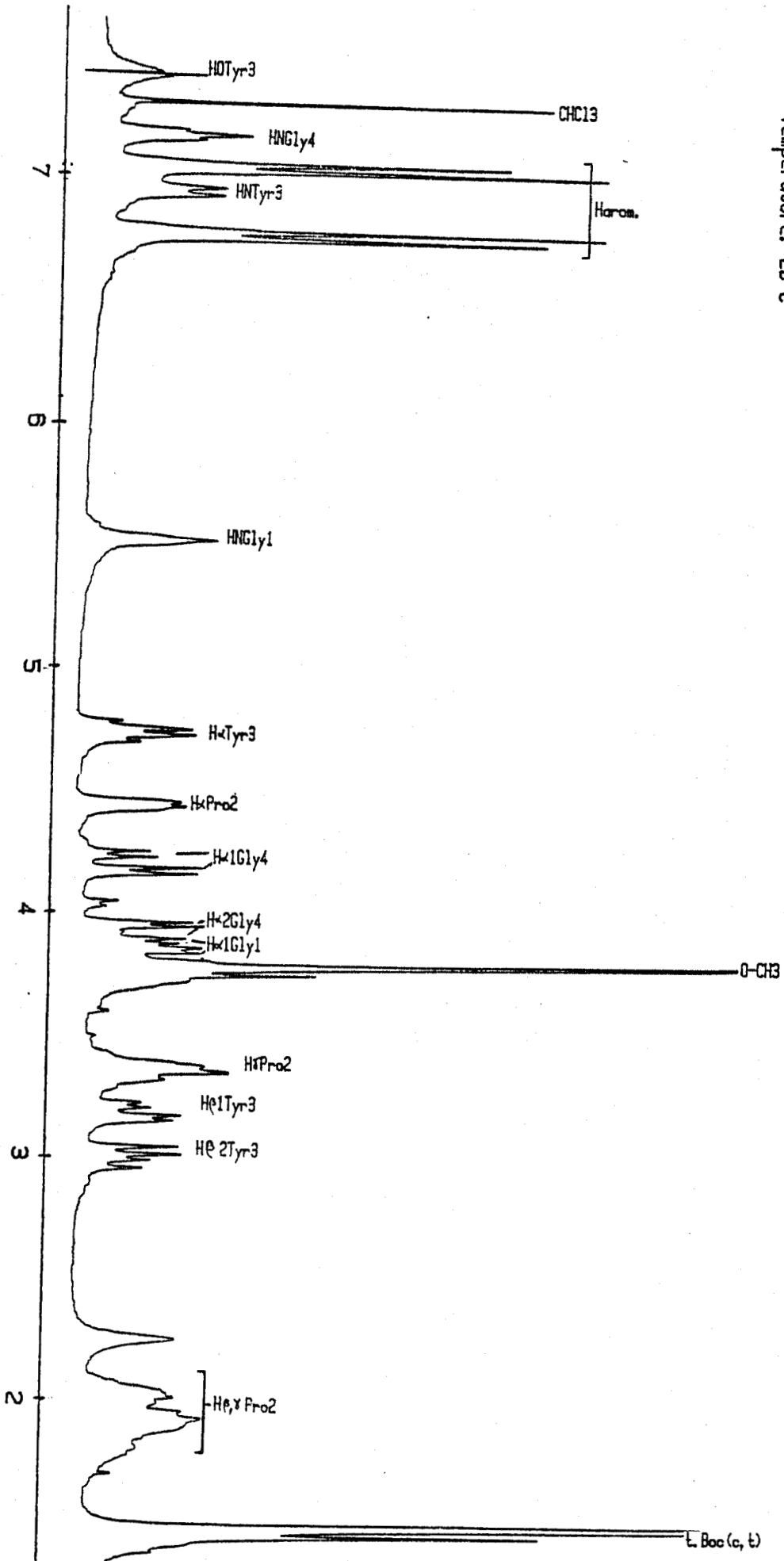
Spectre VII

L. Boc Gly Pro Tyr Gly O CH₃

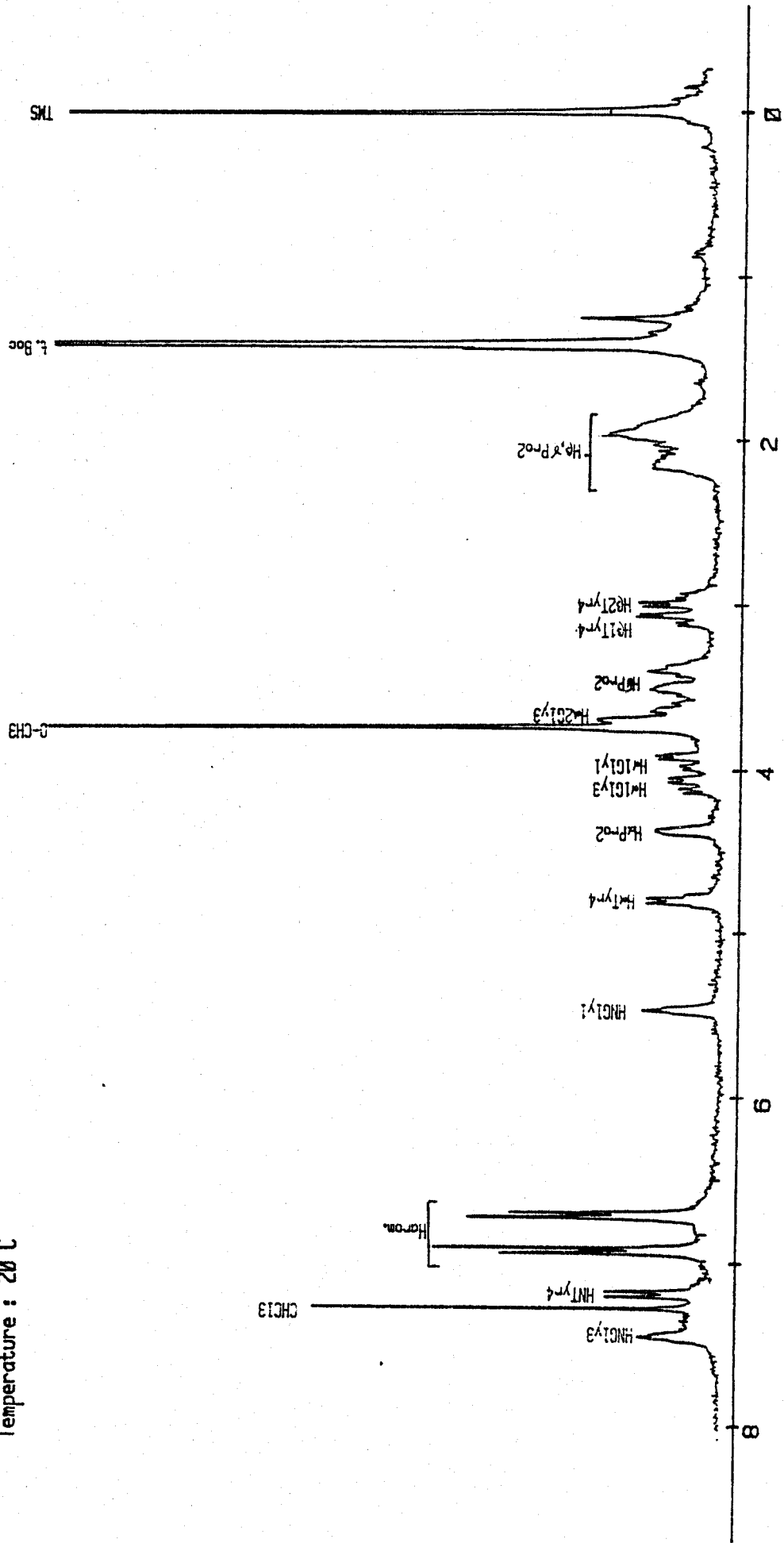
Solvant : CDCl₃

Concentration: 0.055 mole/l

Temperature: 20 C



Spectre VIII
t. Boc Gly Pro Gly Tyr O CH3
Solvant : CDCl3
Concentration : 0.015mole/l
Temperature : 20 C



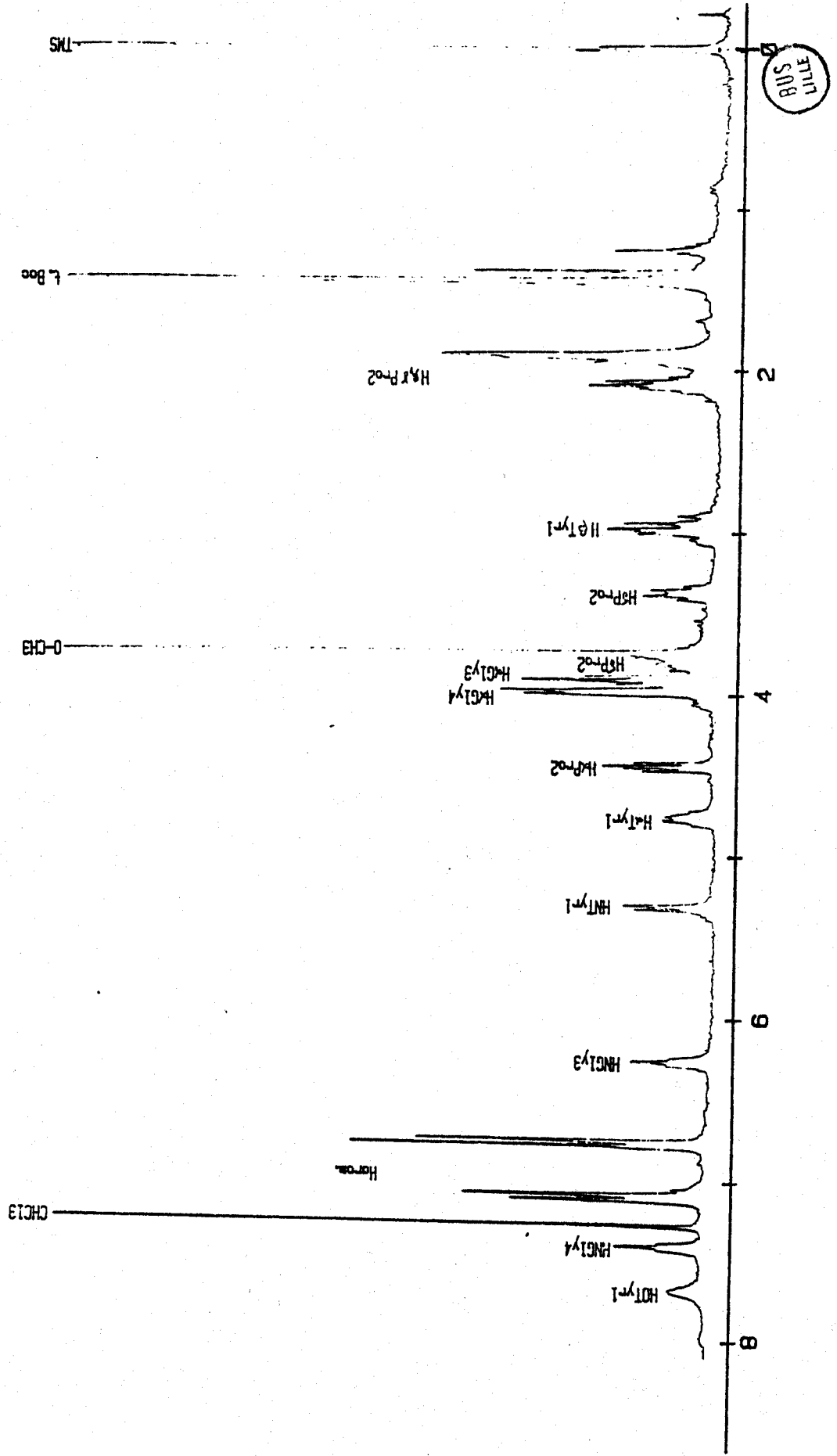
Spectre IX

t. Boc Tyr Pro Gly O CH3

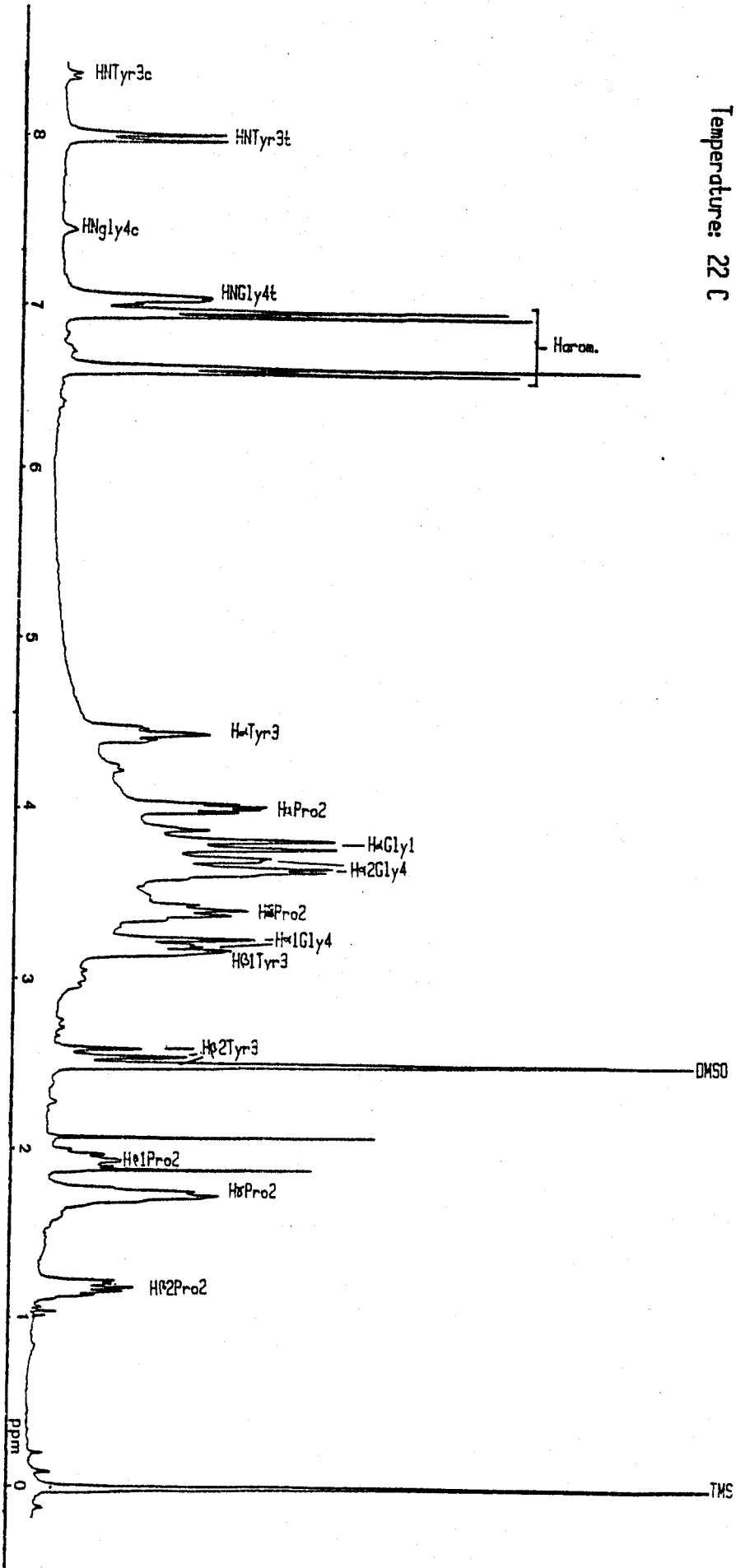
Solvant : CDCl3

Concentration : 0.015mole/l

Temperature : 20 C

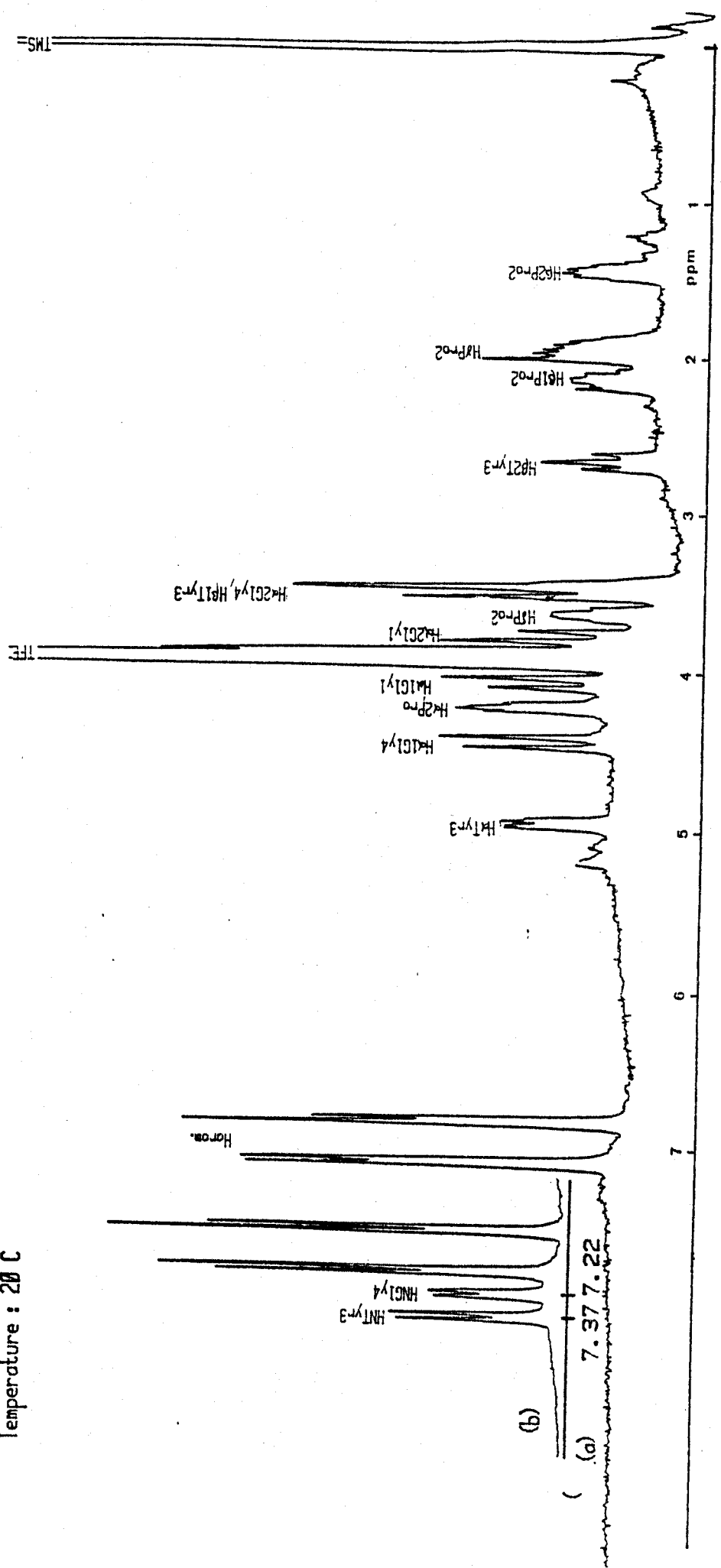


Spectre X
Gly Pro Tyr Gly
Solvant : DMSO d6
Concentration : 0.03 mole/l
Temperature: 22 C

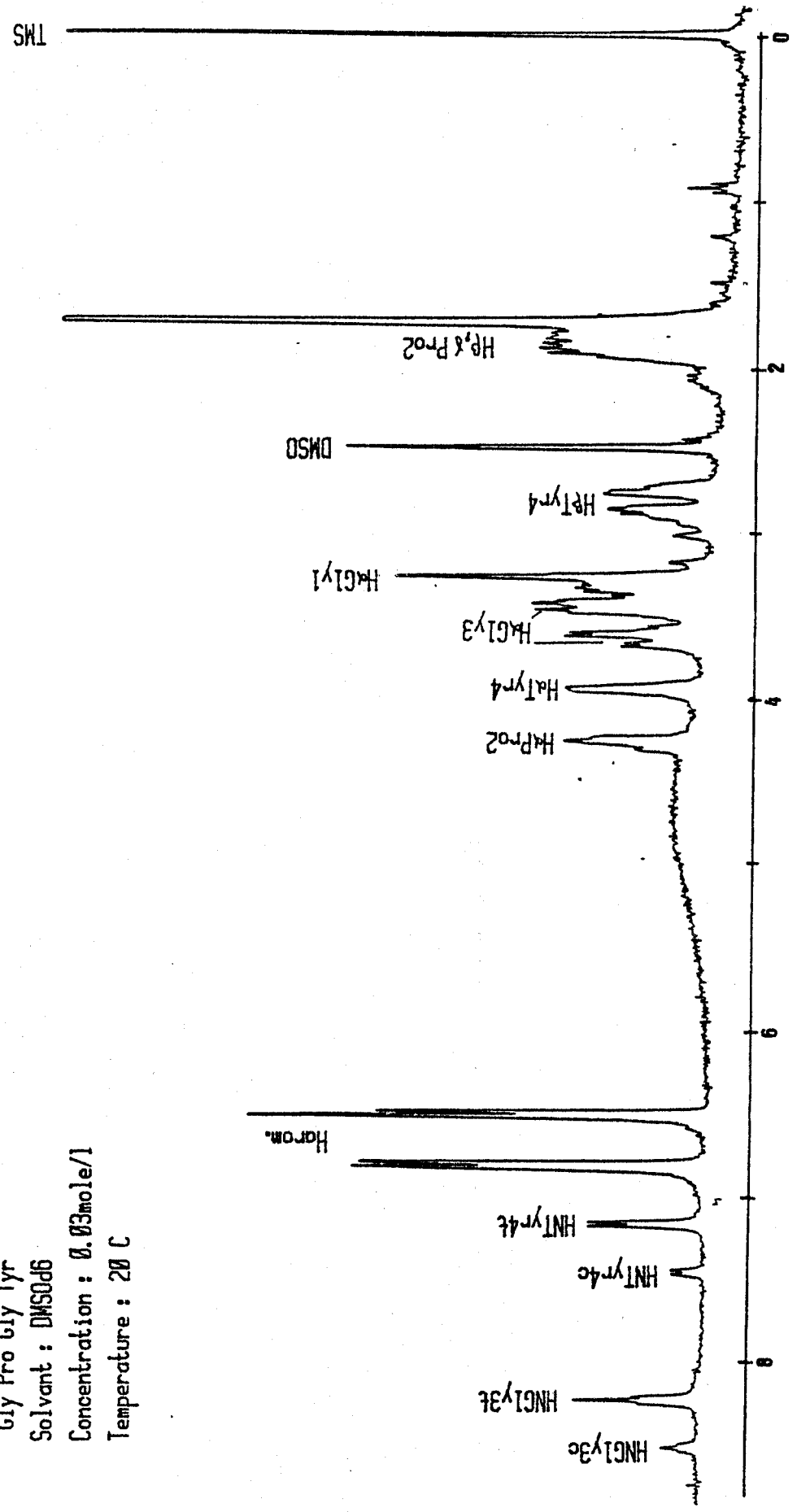


305
LIFE

Spectre XI
Gly Pro Tyr Gly
Solvant : TFE d3(a), TFE (b)
Concentration : 0.03mole/l
Temperature : 20 C



Spectre XII
Gly Pro Gly Tyr
Solvant : DMSO-d6
Concentration : 0.03mole/l
Temperature : 20 C



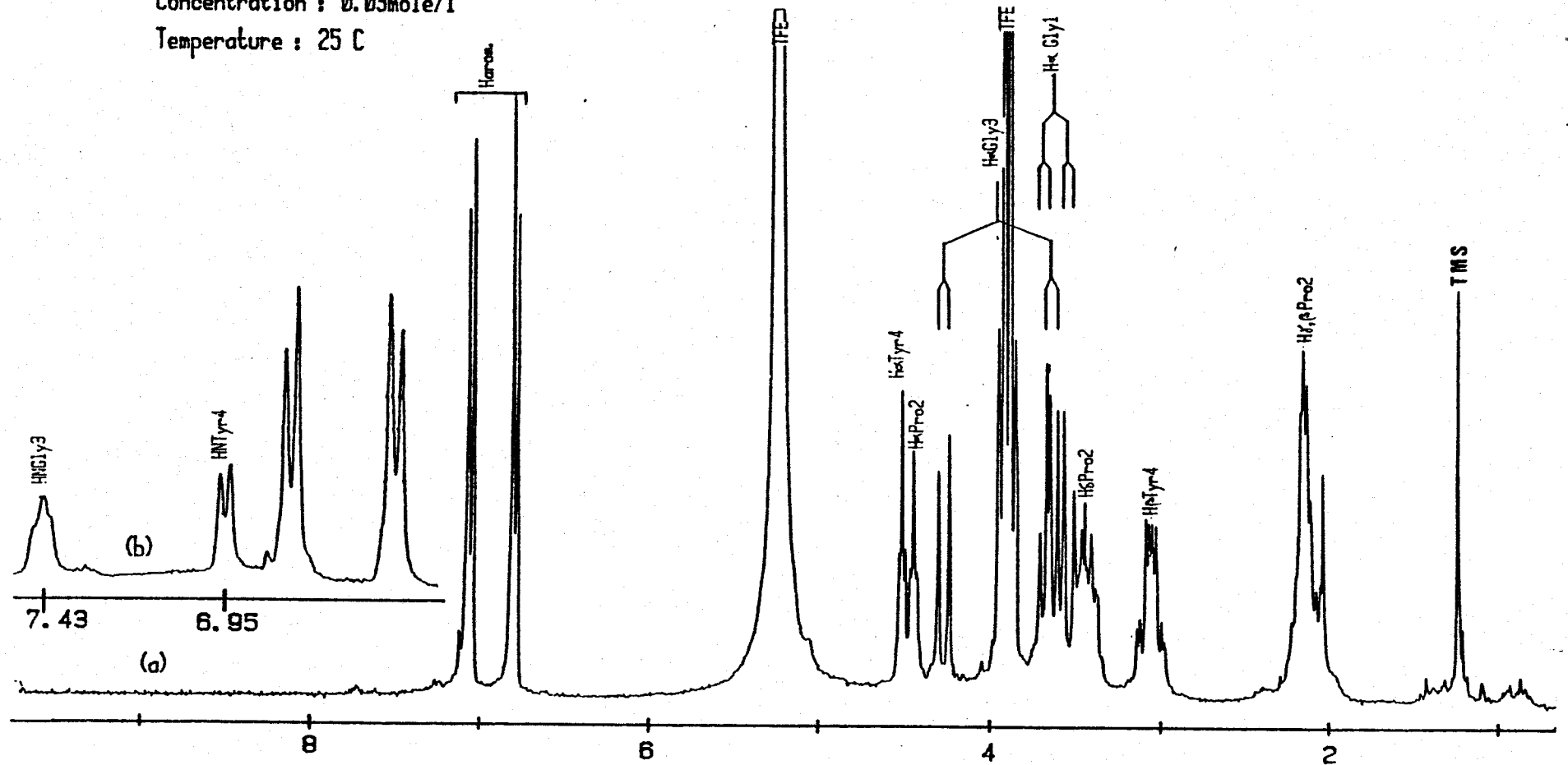
Spectre XIII

Gly Pro Gly Tyr

Solvent : TFE_{d3}(a), TFE(b)

Concentration : 0.03mole/l

Temperature : 25 C



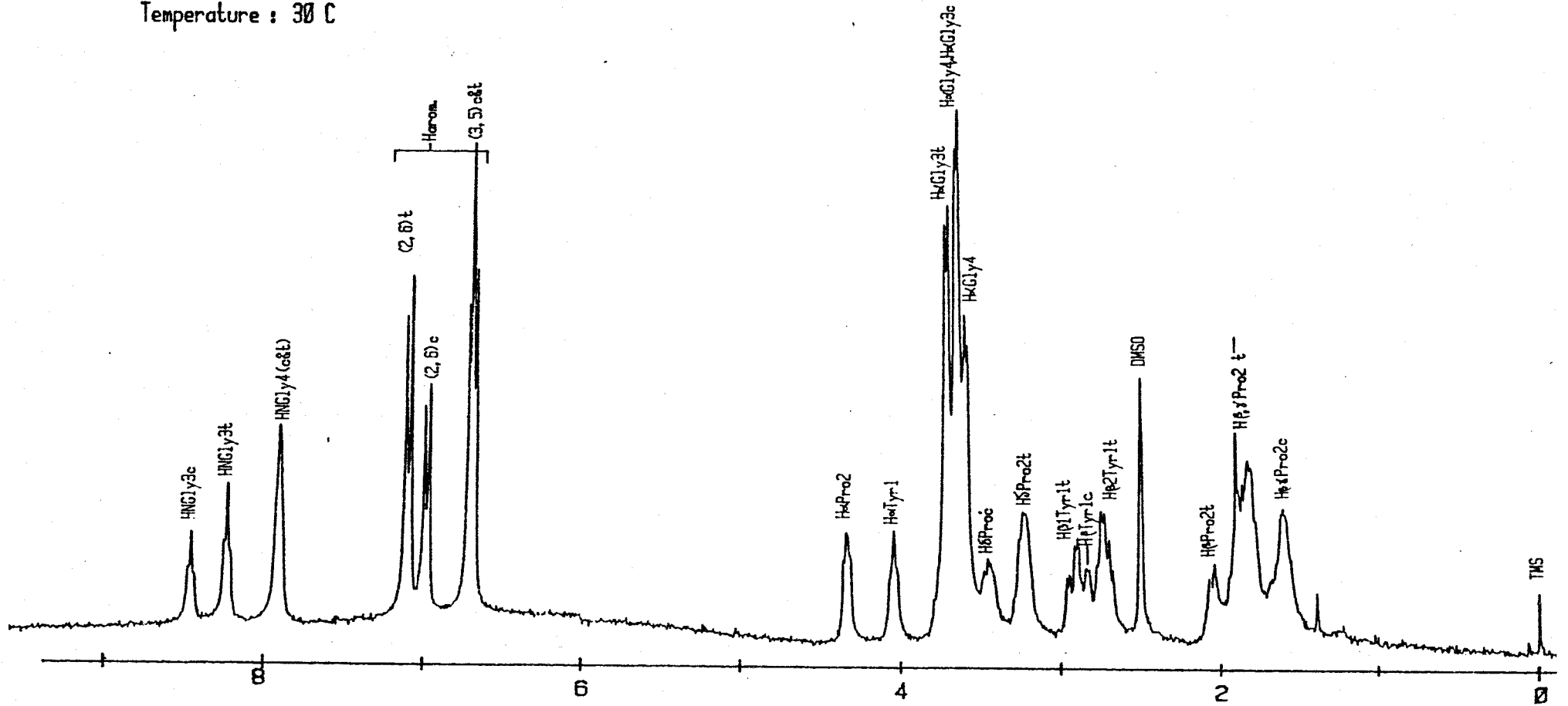
Spectre XIV

Tyr Pro Gly Gly

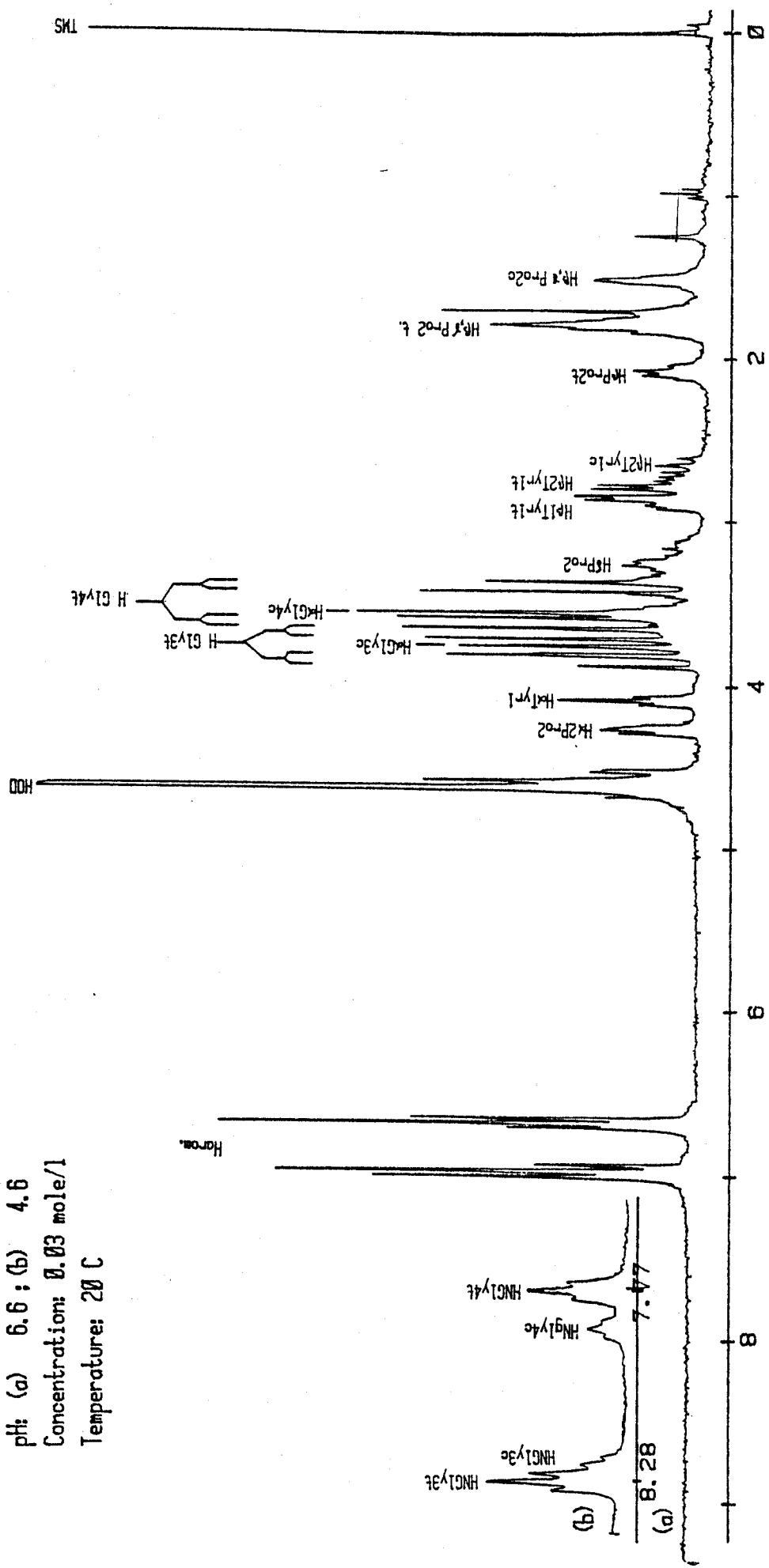
Solvant : DMSO d6

Concentration : 0.03mole/l

Temperature : 30 C

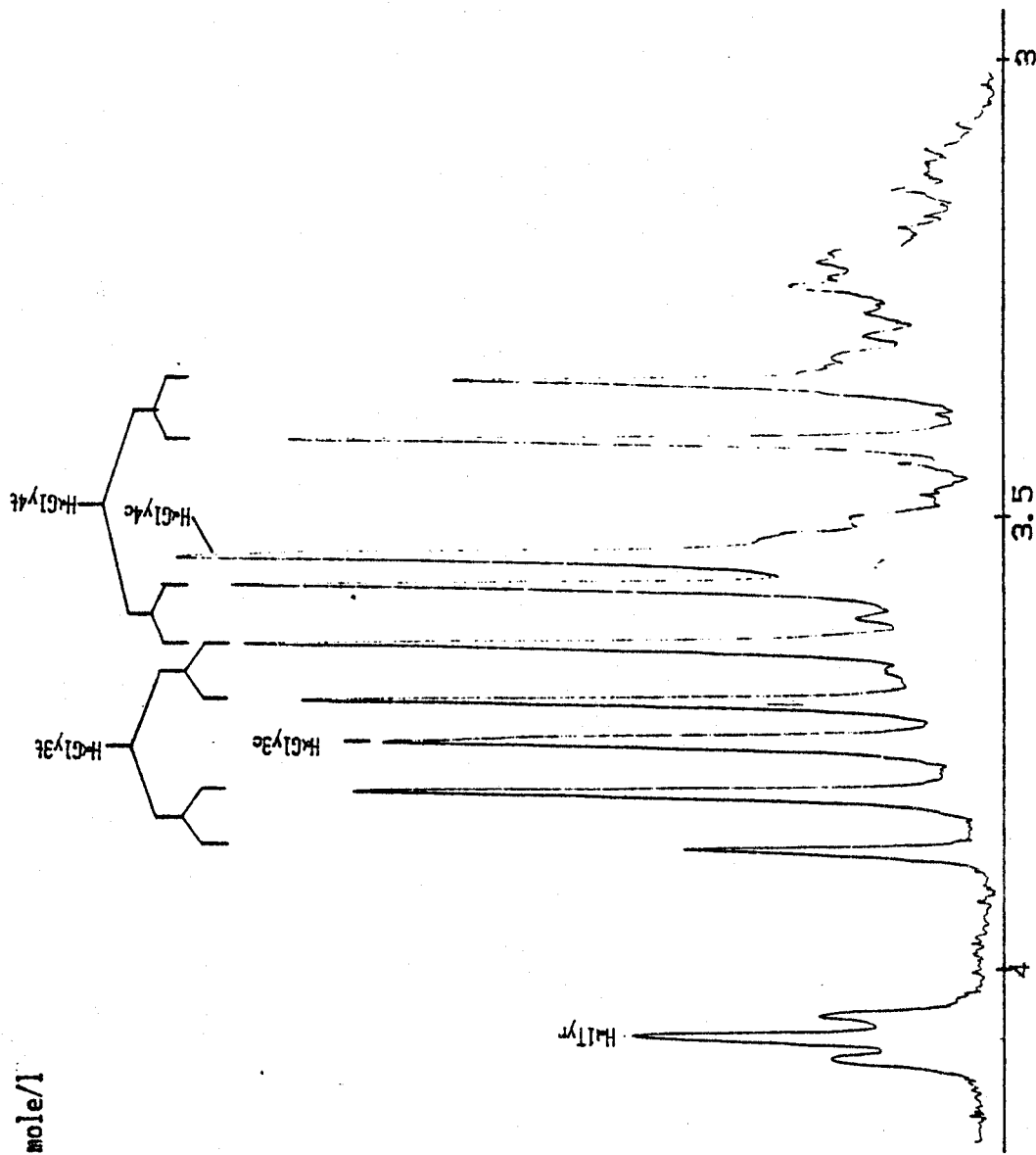


Spectre XVI
 Tyr Pro Gly Gly
 Solvant : (a) → D₂O ; (b) → 90% H₂O, 10% D₂O
 pH: (a) 6.6 ; (b) 4.6
 Concentration: 0.03 mole/l
 Temperature: 20 C

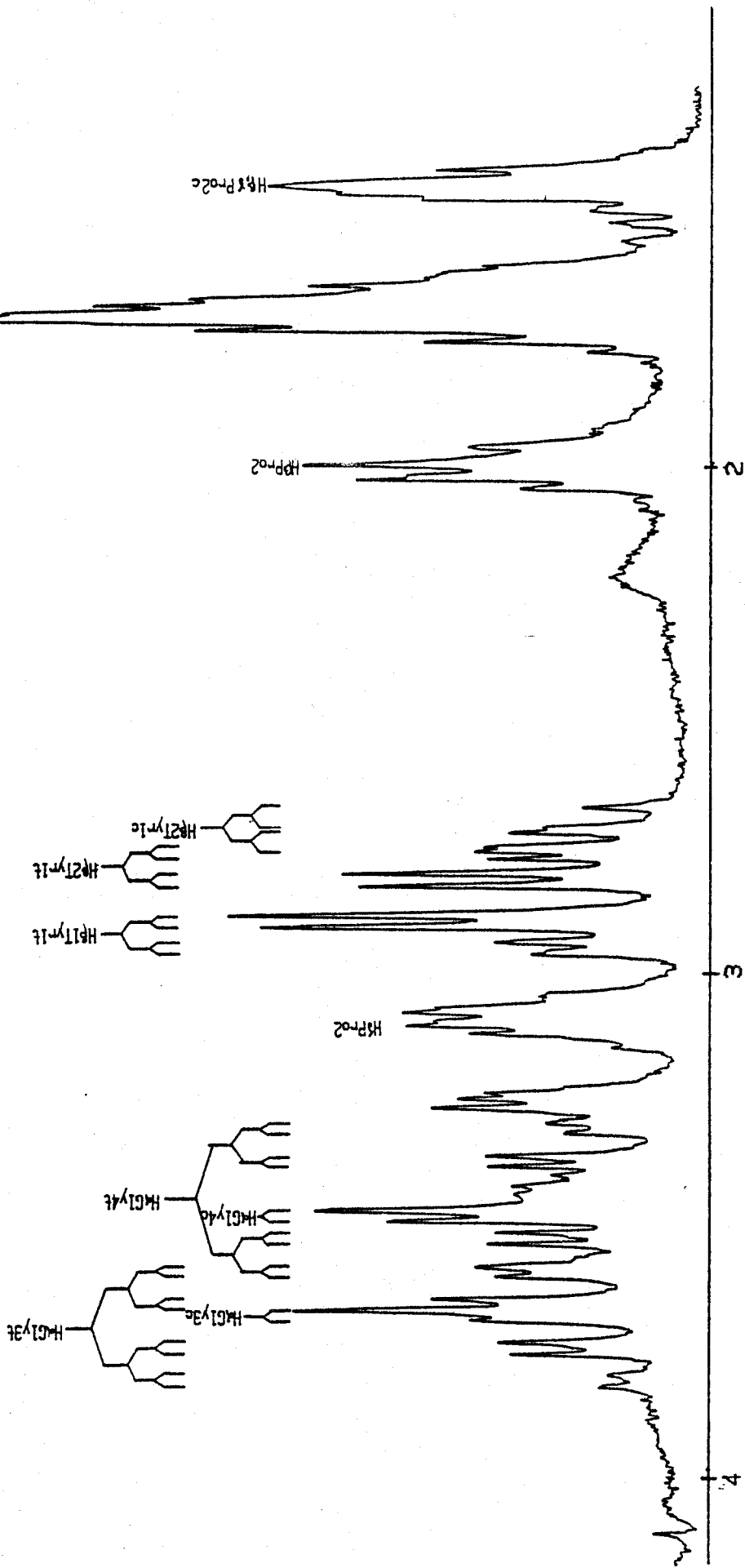


(a) 8.28
 HNGly3c
 HNGly3f
 HNGly4c
 HNGly4f
 4.7
 HOH
 (b)

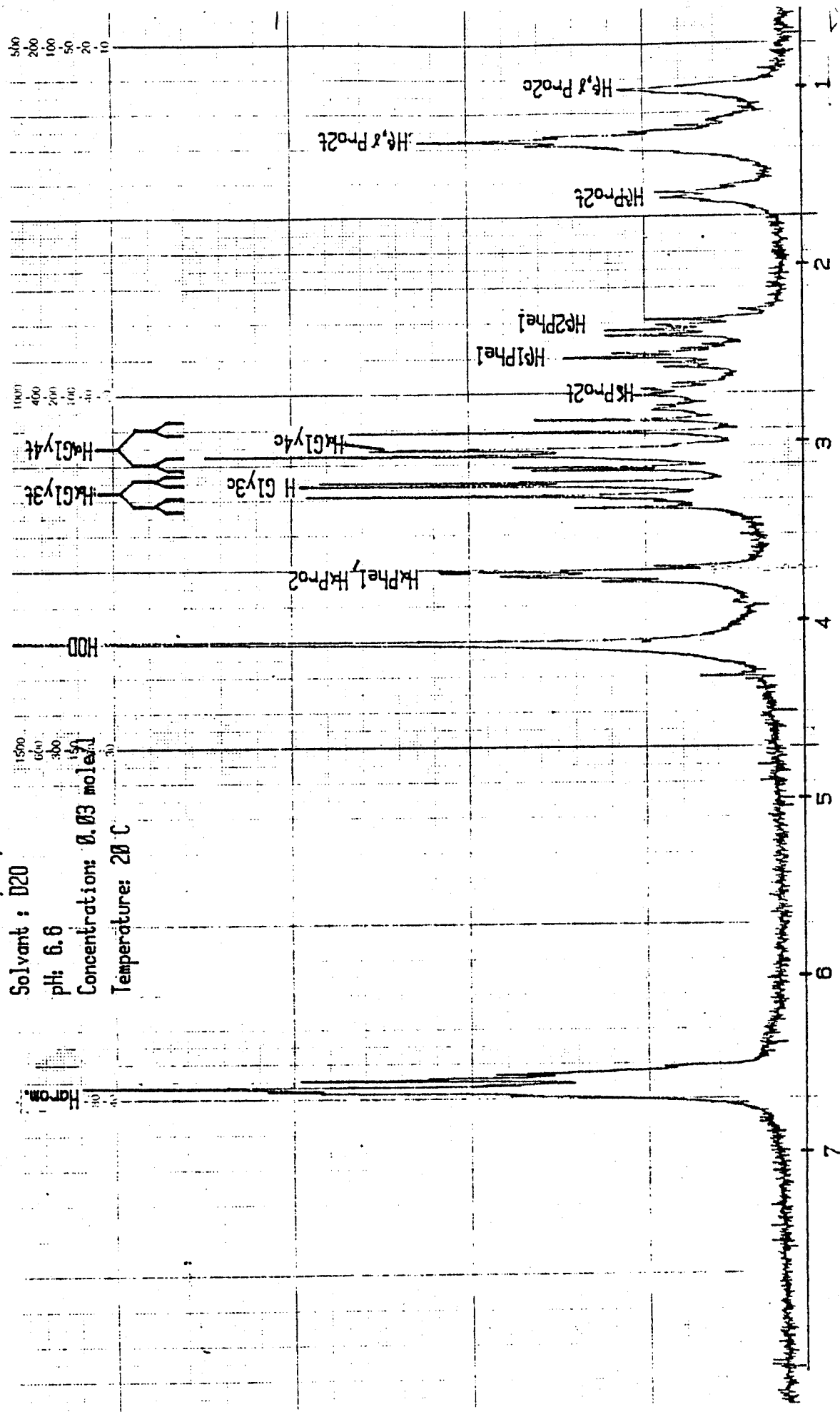
Spectre XVII
Tyr Pro Gly Gly (region H)
Solvant : D2O
pH: 6.6
Concentration: 0.03 mole/l
Temperature: 20 C



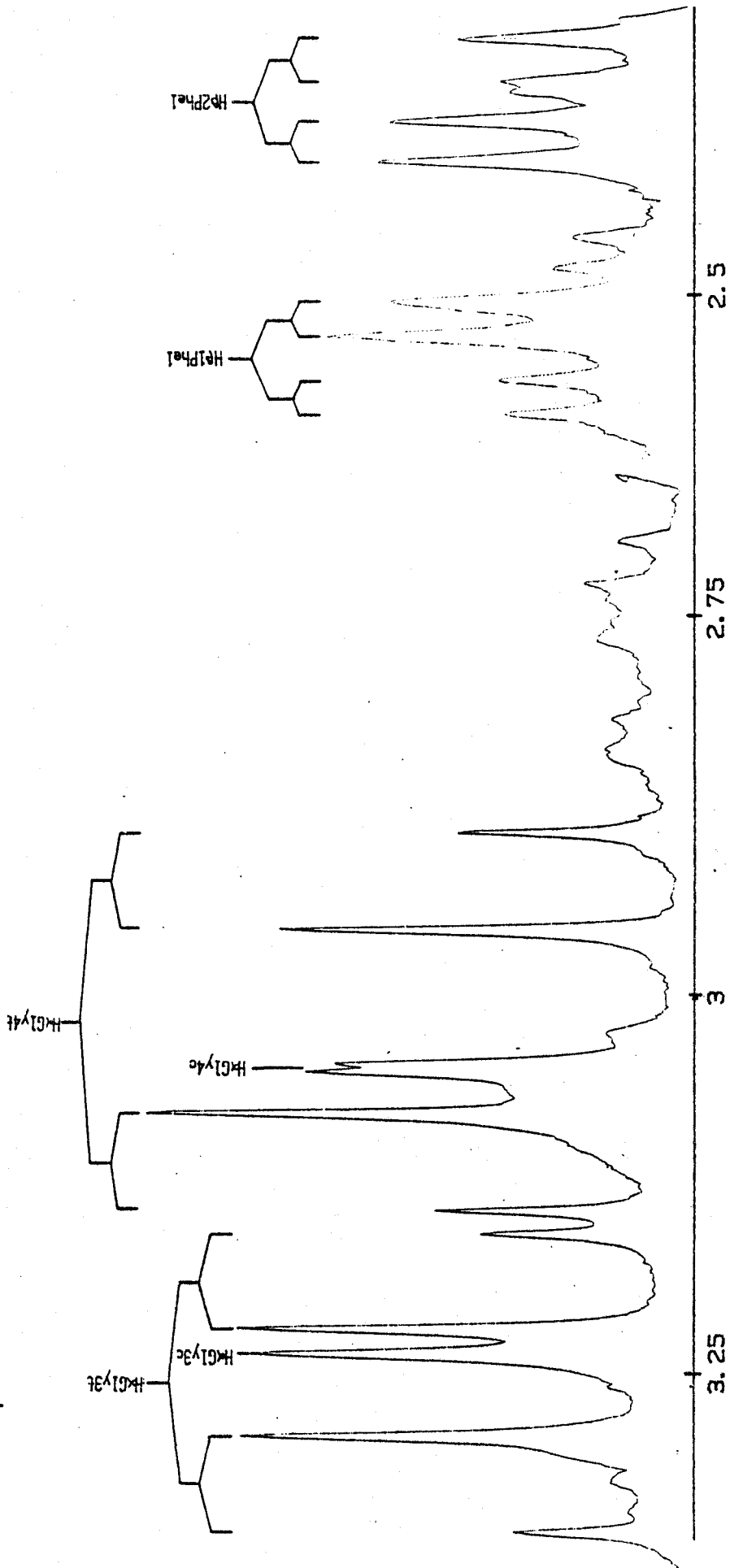
Spectre XVIII
 Tyr Pro Gly Gly (region H α)
 Solvant : 90% H₂O , 10% D₂O
 pH: 6.1
 Concentration: 0.03 mole/l
 Temperature: 20 C



Spectre XIX
Phe Pro Gly Gly
Solvant : D2O
pH: 6.6
Concentration: 0.03 mole/l
Temperature: 20 C



Spectre XX
Phe Pro Gly Gly (region H α)
Solvant : D₂O
pH: 6.6
Concentration: 0.03 mole/l
Temperature: 20 C



Spectre XXI

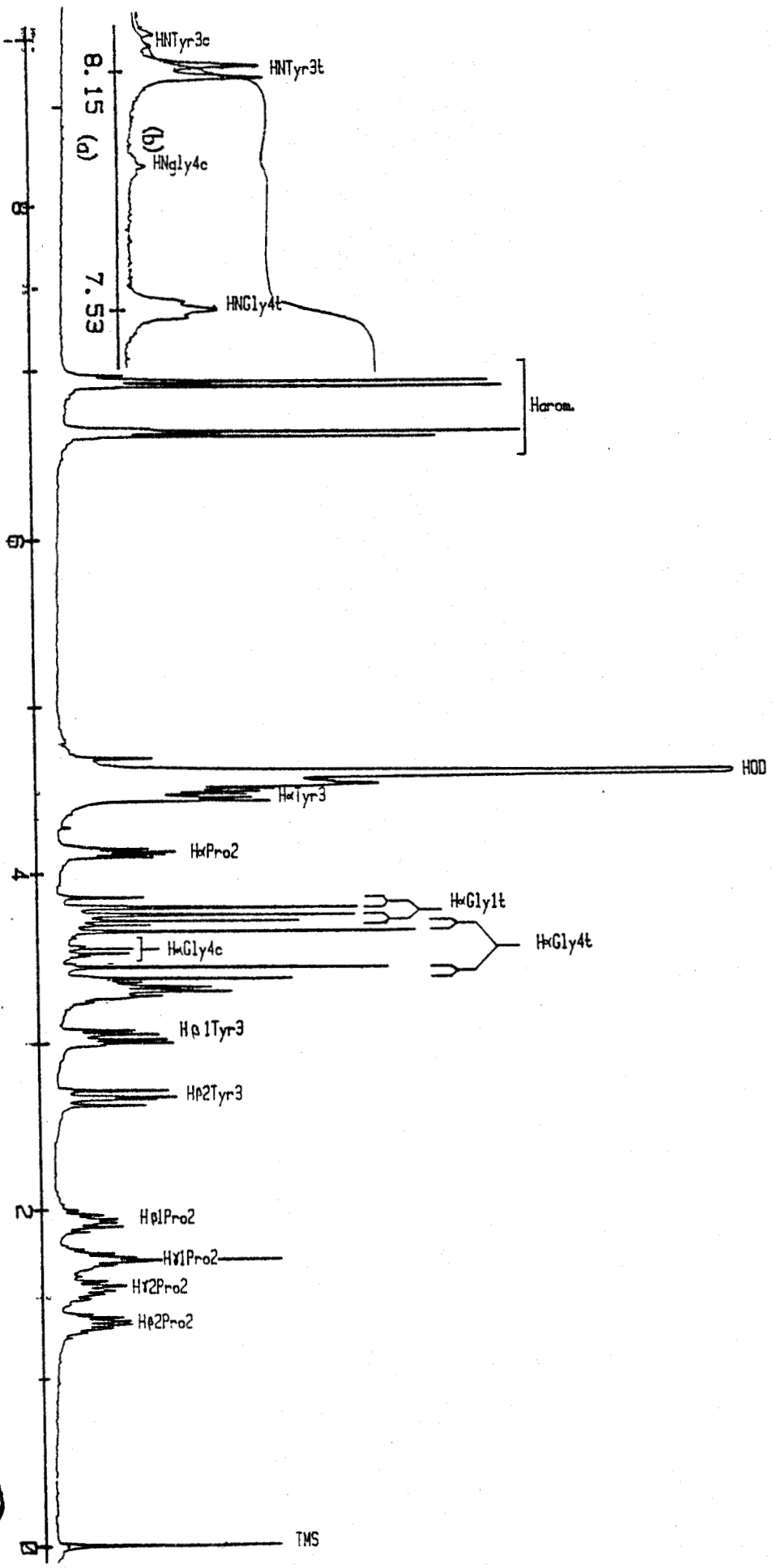
Gly Pro Tyr Gly

Solvent : (a) → D2O ; (b) → 90% H2O , 10% D2O

pH: (a) → 6.3 , (b) → 5.1

Concentration: 0.03 mole/l

Temperature: 20 C



Spectre XXII

Gly Pro Gly Tyr

Solvent: (a) → D₂O ; (b) → 90% H₂O, 10% D₂O

pH: (a) → 6.1, (b) → 5.4

Concentration: 0.03 mole/l

Temperature: 20 C

